

# HI-TACAN Z RWY 23

TACAN Chan <b>42</b>	NBC <b>221°</b>	APCH CRS <b>221°</b>	Rwy ldg <b>12,202</b> TDZE <b>16</b> Arpt Elev <b>37</b>
-------------------------	--------------------	-------------------------	--

[USN]

BEAUFORT MCAS (MERRITT FLD) (KNBC)

**\*When ALS inop, increase vis to 1 mile.**

**ALSF-1**  **MISSED APPROACH:** Climb to 500, then climbing right turn to 3000, intercept NBC TACAN R-307 direct BRAYS and hold.

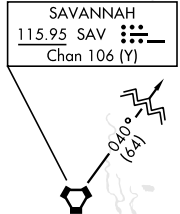
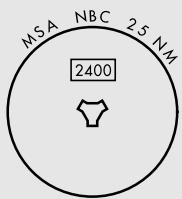
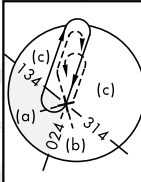
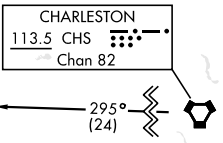
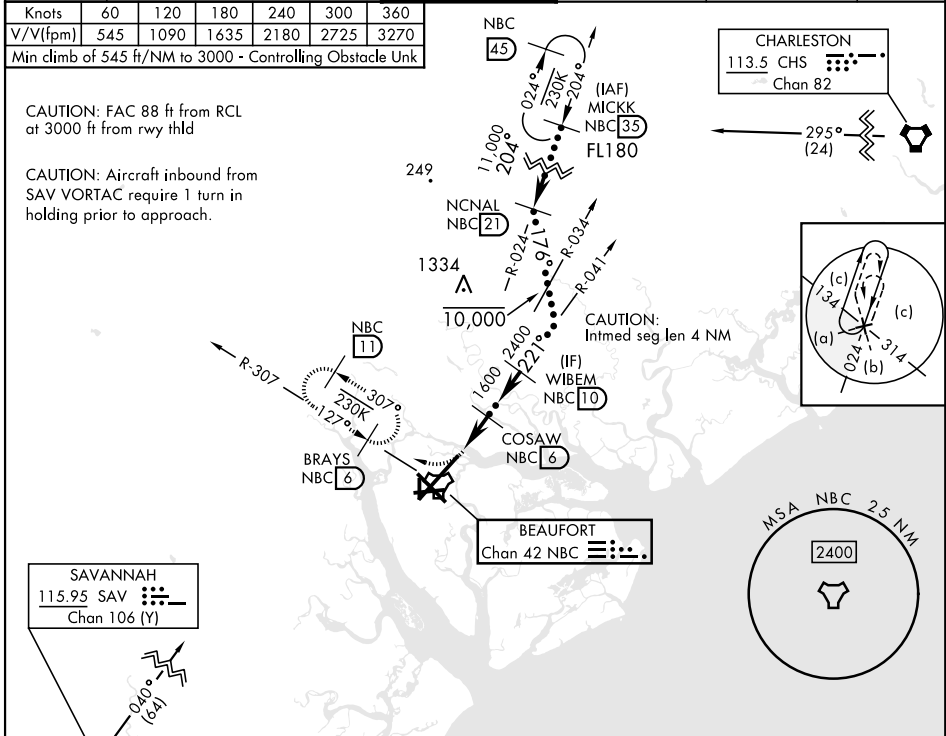
ATIS ★ <b>279.525</b>	APP CON (ABV 3000) <b>125.125</b> <b>292.125</b> (3000 and BLW) <b>123.7</b> <b>269.125</b>	TOWER ★ <b>119.05</b> <b>342.875</b>	GND CON <b>128.15</b> <b>348.625</b>	CLNC DEL <b>128.15</b> <b>254.375</b>	ASR/PAR
--------------------------	---	---	---	--	---------

Knots	60	120	180	240	300	360
V/V(fpm)	545	1090	1635	2180	2725	3270

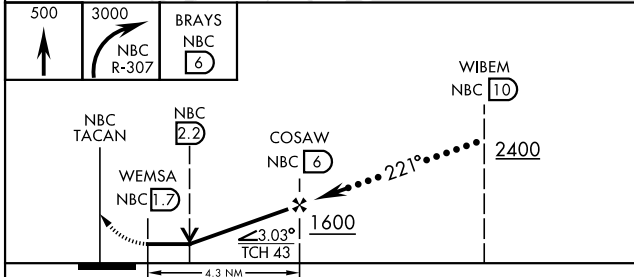
Min climb of 545 ft/NM to 3000 - Controlling Obstacle Unk

CAUTION: FAC 88 ft from RCL at 3000 ft from rwy thld

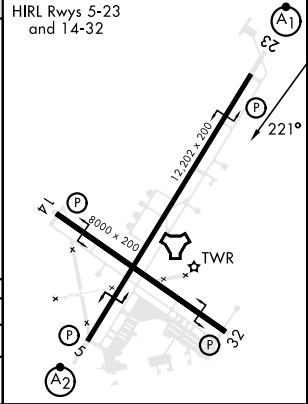
CAUTION: Aircraft inbound from SAV VORTAC require 1 turn in holding prior to approach.



EMERG SAFE ALT 100 NM 3100



ELEV <b>37</b>	TDZE <b>16</b>
----------------	----------------



CATEGORY	C	D	E
S-23 *	380-3/4	364	(400-3/4)
CIRCLING	580-1 1/2 543 (600-1 1/2)	600-2 563 (600-2)	740-2 1/2 703 (800-2 1/2)

# HI-TACAN Z RWY 23

SE-2, 31 OCT 2024 to 28 NOV 2024

SE-2, 31 OCT 2024 to 28 NOV 2024