

HI-TACAN Y RWY 23

TACAN NBC Chan 42	APCH CRS 221°	Rwy ldg 12,202 TDZE 16 Arprt Elev 37
-----------------------------	-------------------------	---

[USN]

BEAUFORT MCAS (MERRITT FLD) (KNBC)

ALSIF-1

 A1

 MISSED APPROACH: Climb to 500, then climbing right turn to 3000, intercept NBC TACAN R-307 direct BRAYS and hold.

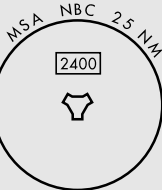
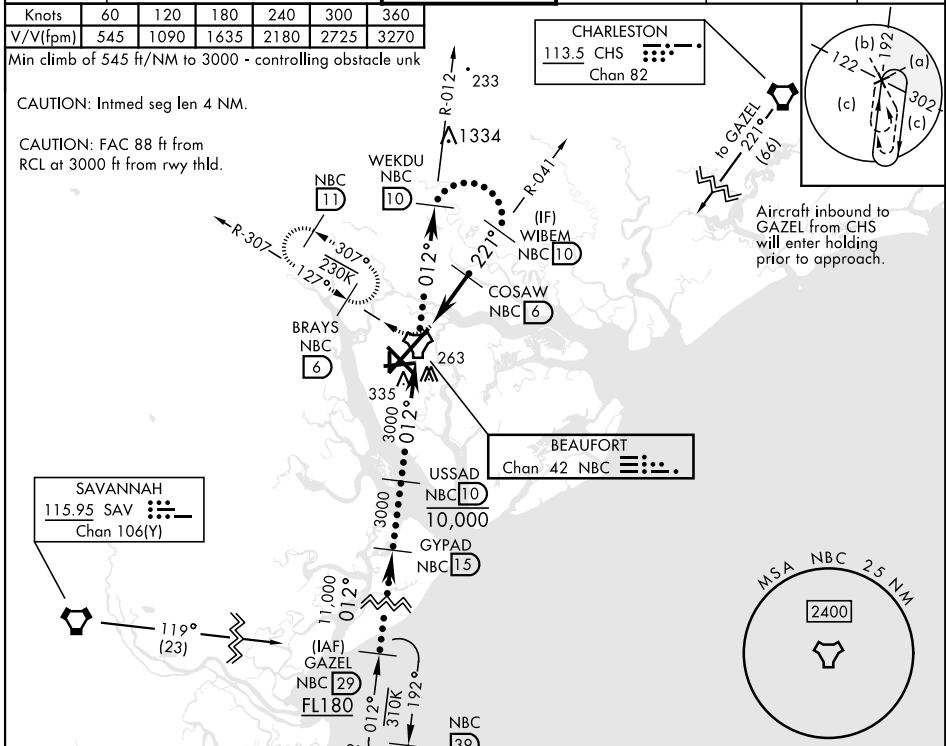
ATIS ★ 279.525	APP CON (ABV 3000) 125.125 292.125 (3000 and BLW) 123.7 269.125	TOWER ★ 119.05 342.875	GND CON 128.15 348.625	CLNC DEL 128.15 254.375	ASR/PAR
--------------------------	---	---	---	--	---------

Knots	60	120	180	240	300	360
V/V(fpm)	545	1090	1635	2180	2725	3270

Min climb of 545 ft/NM to 3000 - controlling obstacle unk

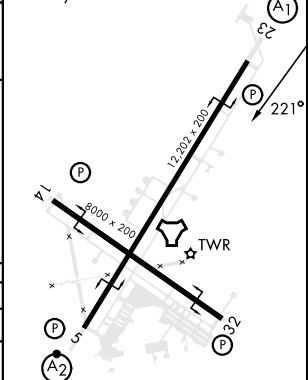
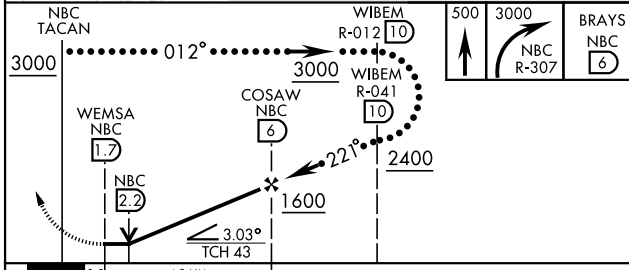
CAUTION: Intmed seg len 4 NM.

CAUTION: FAC 88 ft from RCL at 3000 ft from rwy thld.



EMERG SAFE ALT 100 NM 3100

ELEV 37	TDZE 16
HIRL Rwy 5-23 and 14-32	



CATEGORY	C	D	E
S-23 *	380-3/4	364	(400-3/4)
CIRCLING	580-1 1/2 543 (600-1 1/2)	600-2 563 (600-2)	740-2 1/2 703 (800-2 1/2)

HI-TACAN Y RWY 23

SE-2, 31 OCT 2024 to 28 NOV 2024

SE-2, 31 OCT 2024 to 28 NOV 2024