

APP CRS
075°

Rwy Idg **4000**
TDZE **205**
Apt Elev **221**

RNAV (GPS) RWY 9

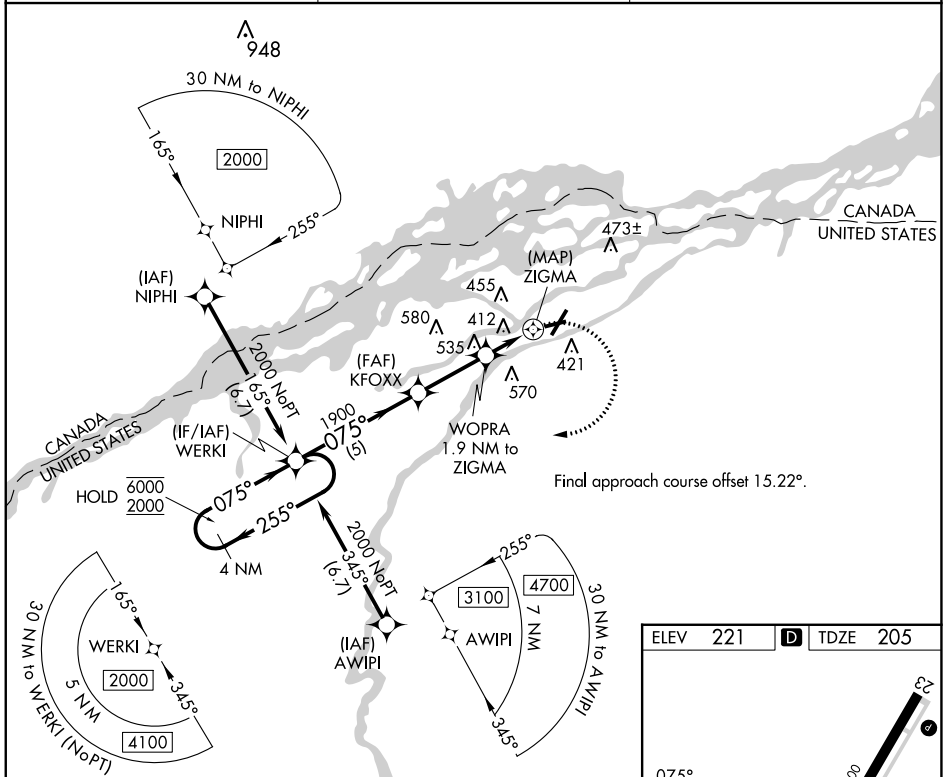
MASSENA INTL-RICHARDS FLD (MSS)

RNP APCH - GPS.

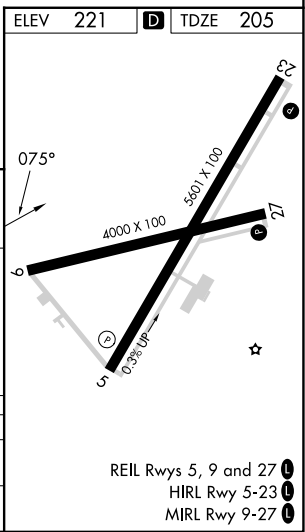
▽ Rwy 9 helicopter visibility reduction below 1 SM NA.
▲ Straight-in Rwy 9 NA at night, Circling Rwy 9, 23, 27 NA at night.

MISSED APPROACH: Climbing right turn to 2000 direct WERKI and hold.

ASOS **128.075** BOSTON CENTER **135.25 377.1** UNICOM **123.0 (CTAF) 0**



4 NM Holding Pattern	Visual Segment - Obstacles.			
	WERKI	KFOXX	WOPRA 1.9 NM to ZIGMA	ZIGMA
6000 ← 255°	2000 → 075°	1900	1020	
← 5 NM ← 2.8 NM ← 1.9 NM ← 0.5 NM				
CATEGORY	A	B	C	D
LNVA MDA	680-1	475 (500-1)	680-1 $\frac{3}{8}$	475 (500-1 $\frac{3}{8}$)
C CIRCLING	740-1	519 (600-1)	880-1 $\frac{3}{4}$ 659 (700-1 $\frac{3}{4}$)	880-2 659 (700-2)



NE-2, 03 OCT 2024 to 31 OCT 2024

NE-2, 03 OCT 2024 to 31 OCT 2024

REIL Rwy 5, 9 and 27 **0**
HIRL Rwy 5-23 **0**
MIRL Rwy 9-27 **0**