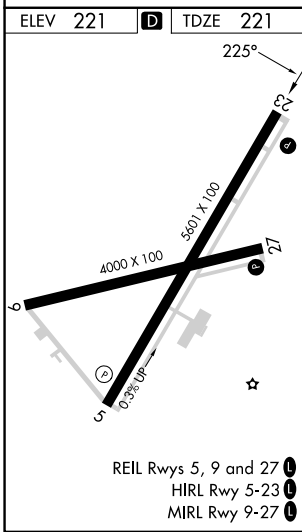
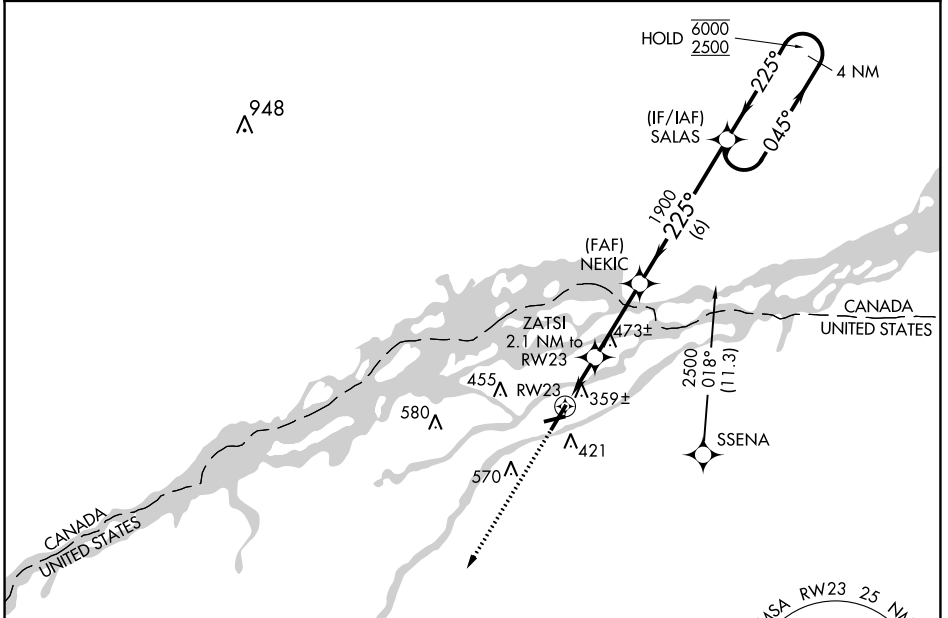


APP CRS	Rwy Idg	5601
225°	TDZE	221
	Apt Elev	221

RNAV (GPS) RWY 23

MASSENA INTL-RICHARDS FLD (MSS)

RNP APCH - GPS		MISSED APPROACH: Climb to 2800 direct DORIE and hold.
<p>⚠ Rwy 23 helicopter visibility reduction below 1 SM NA. Straight-in Rwy 23 NA at night, Circling Rwy 9, 23, 27 NA at night.</p>		
ASOS 128.075	BOSTON CENTER 135.25 377.1	UNICOM 123.0 (CTAF) 0



ELEV 221	D	TDZE 221		
<p>225°</p> <p>DORIE</p> <p>4 NM</p> <p>2800</p> <p>Visual Segment - Obstacles.</p> <p>SALAS 4 NM Holding Pattern</p> <p>NEKIC</p> <p>ZATSI 2.1 NM to RW23</p> <p>RW23</p> <p>900</p> <p>1900</p> <p>225°</p> <p>045°</p> <p>6000</p> <p>2500</p> <p>2.1 NM</p> <p>3.1 NM</p> <p>6 NM</p>				
CATEGORY	A	B	C	D
LNAV MDA	620-1	399 (400-1)	620-1 $\frac{1}{8}$	399 (400-1 $\frac{1}{8}$)
C CIRCLING	740-1	519 (600-1)	880-1 $\frac{3}{4}$ 659 (700-1 $\frac{3}{4}$)	880-2 659 (700-2)

NE-2, 31 OCT 2024 to 28 NOV 2024

NE-2, 31 OCT 2024 to 28 NOV 2024