

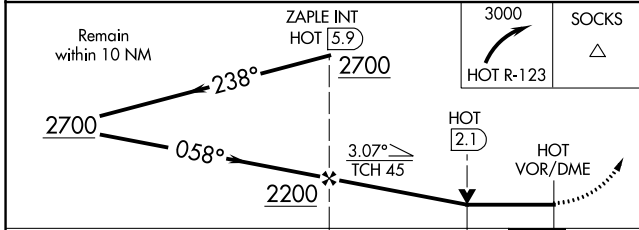
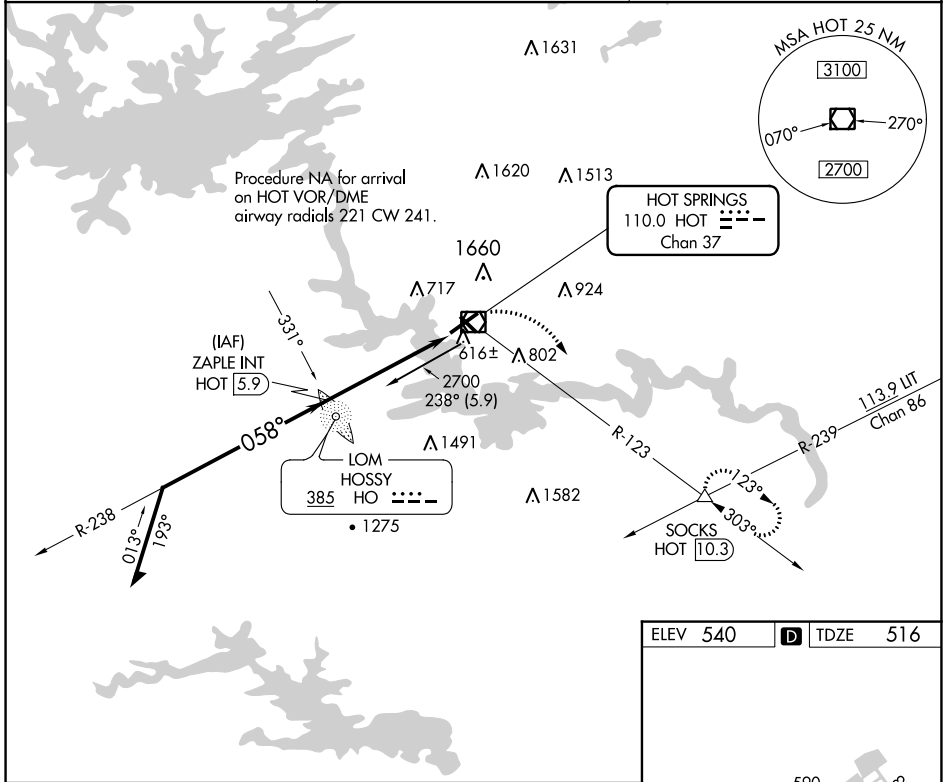
VOR/DME HOT <b>110.0</b> Chan <b>37</b>	APP CRS <b>058°</b>	Rwy Idg <b>6595</b> TDZE <b>516</b> Apt Elev <b>540</b>
-----------------------------------------------	------------------------	---------------------------------------------------------------

# VOR RWY 5

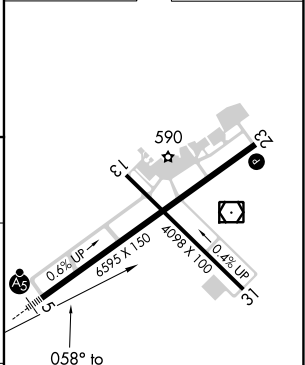
MEML FLD (HOT)

ADF or DME required for procedure entry. ADF or DME required.	MALSR 	MISSED APPROACH: Climbing right turn to 3000 on HOT R-123 to SOCKS INT/HOT 10.3 DME and hold.
Circling NA northwest of Rwys 5 and 23. Circling Rwy 31 NA at night.		

ASOS <b>119.925</b>	MEMPHIS CENTER <b>128.475 377.15</b>	UNICOM <b>123.0 (CTAF) 0</b>
------------------------	-----------------------------------------	---------------------------------



ELEV 540	<b>D</b> TDZE 516
----------	-------------------



CATEGORY	A	B	C	D
S-5	960-1/2 444 (500-1/2)		960-7/8 444 (500-7/8)	
CIRCLING	1080-1 540 (600-1)		1380-2 1/2 840 (900-2 1/2)	1620-3 1080 (1100-3)

HIRL Rwy 5-23   
MIRL Rwy 13-31   
REIL Rwy 13

SC-1, 31 OCT 2024 to 28 NOV 2024

SC-1, 31 OCT 2024 to 28 NOV 2024