

WAAS CH 40420 W18A	APP CRS 178°	Rwy Idg TDZE 206 Apt Elev 206	5998
--	------------------------	---	-------------

RNAV (GPS) RWY 18

PINEBLUFF RGNL/GRIDER FLD (PBF)

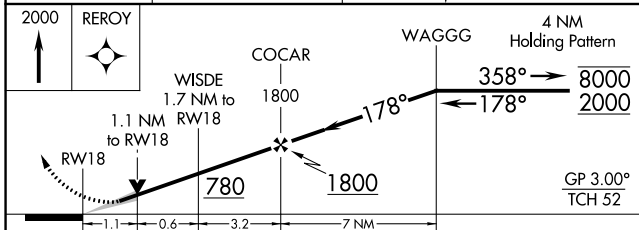
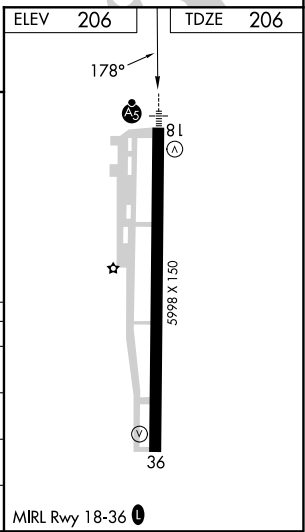
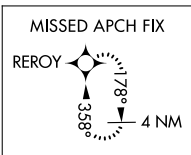
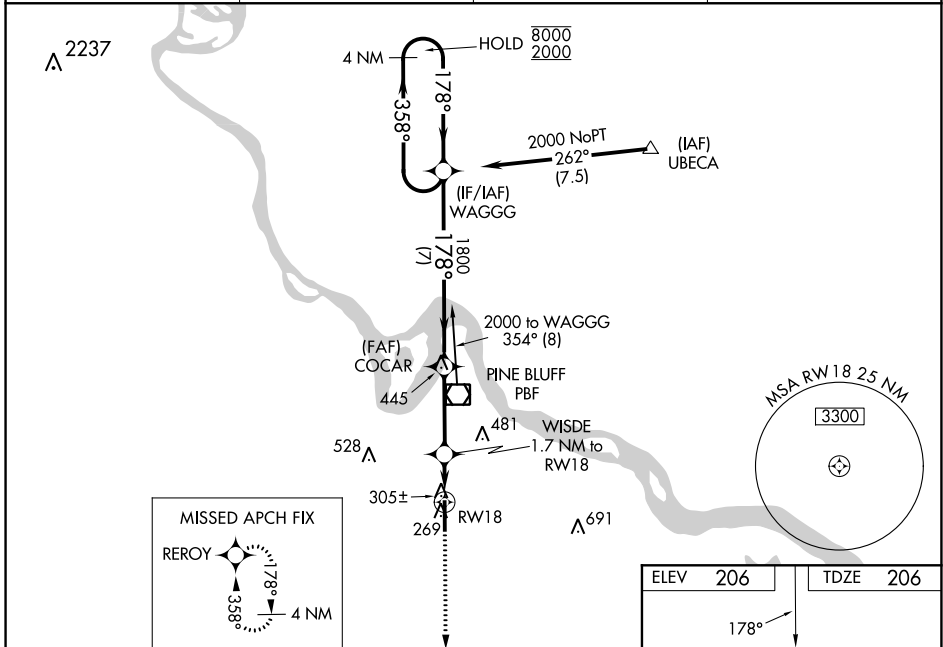
RNP APCH - GPS.

MAJRS

MISSED APPROACH:
Climb to 2000 direct REROY and hold.

Baro-VNAV and VDP NA when using Stuttgart altimeter setting. For uncompensated Baro-VNAV systems, LNAV/VNAV NA below -10°C or above 54°C. When local altimeter setting not received, use Stuttgart altimeter setting and increase LPV DA to 534 feet; increase LNAV/VNAV DA to 723 feet and all visibilities ½ SM. Increase all MDAs 80 feet and LNAV visibility Cat C/D ¾ SM, and Circling visibility Cat C/D ¼ SM. For inop ALS, increase LNAV Cats A/B visibility to 1 SM and Cats C/D visibility to 1½ SM. For inop ALS when using Stuttgart altimeter setting, increase LPV all Cats visibility to 1 SM; increase LNAV/VNAV all Cats visibility to 1½ SM; increase LNAV Cats C/D visibility 1½ SM.

ASOS 120.775	LITTLE ROCK APP CON 119.85 353.6	CINC DEL 119.85	UNICOM 123.0 (CTAF) 0
------------------------	--	---------------------------	---------------------------------



CATEGORY	A	B	C	D
LPV DA		459-¾	253 (300-¾)	
LNAV/VNAV DA		648-1	442 (500-1)	
LNAV MDA		600-¾	394 (400-¾)	
CIRCLING	660-1 454 (500-1)	680-1 474 (500-1)	840-1¾ 634 (700-1¾)	880-2¼ 674 (700-2¼)

GP 3.00° TCH 52

MIRL Rwy 18-36 0

SC-1, 05 SEP 2024 to 03 OCT 2024

SC-1, 05 SEP 2024 to 03 OCT 2024