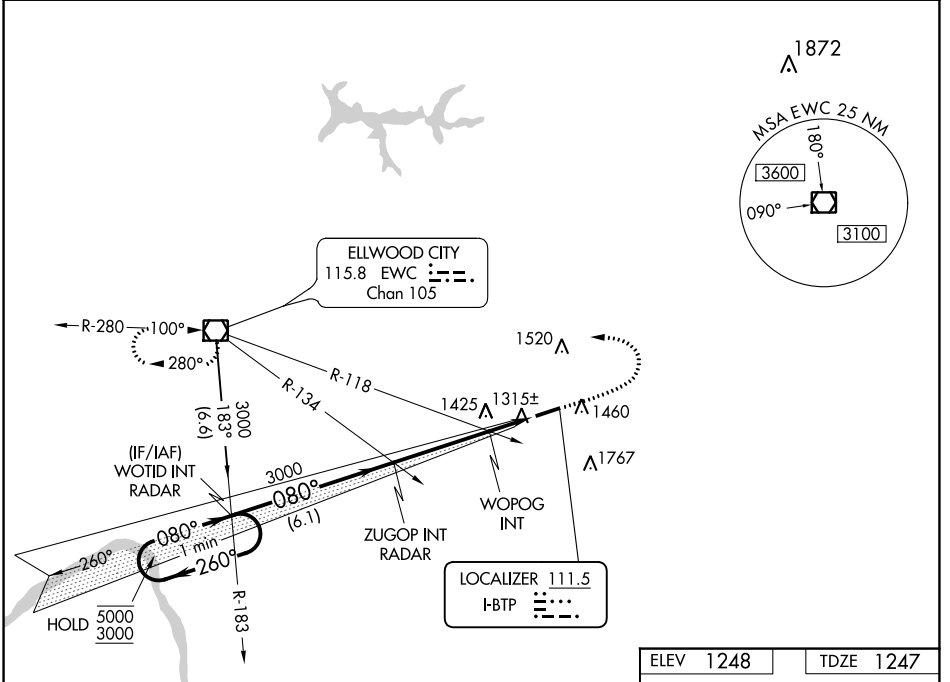


LOC I-BTP <b>111.5</b>	APP CRS <b>080°</b>	Rwy Idg <b>4801</b>
		TDZE <b>1247</b>
		Apt Elev <b>1248</b>

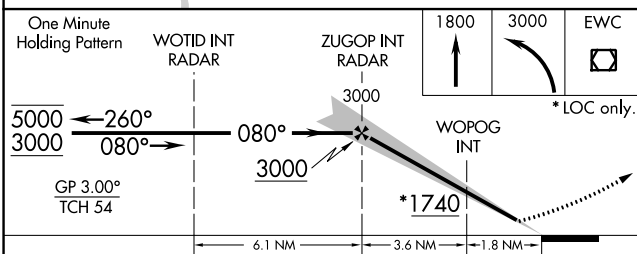
**ILS or LOC RWY 8**  
PITTSBURGH/BUTLER RGNL (BTP)

<p><b>▽</b> Rwy 8 helicopter visibility reduction below 3/4 SM NA. <b>▲</b> Circling Rwy 26 NA at night. S-ILS 8 inop table does not apply.</p>	<p>MALSF </p>	<p>MISSED APPROACH: Climb to 1800 then climbing left turn to 3000 direct EWC VOR/DME and hold.</p>	
AWOS-3PT <b>121.450</b>	PITTSBURGH APP CON <b>124.75 338.2</b>	CLNC DEL <b>119.4</b>	UNICOM <b>123.05 (CTAF) 0</b>



NE-4, 03 OCT 2024 to 31 OCT 2024

NE-4, 03 OCT 2024 to 31 OCT 2024



ELEV 1248	TDZE 1247																																																				
<table border="1"> <thead> <tr> <th>CATEGORY</th> <th>A</th> <th>B</th> <th>C</th> <th>D</th> </tr> </thead> <tbody> <tr> <td>S-ILS 8</td> <td colspan="2">1497-3/4</td> <td colspan="2">250 (300-3/4)</td> </tr> <tr> <td>S-LOC 8</td> <td>1740-3/4</td> <td>493 (500-3/4)</td> <td>1740-1 1/8</td> <td>493 (500-1 1/8)</td> </tr> <tr> <td><b>C</b> CIRCLING</td> <td>1820-1</td> <td>572 (600-1)</td> <td>2080-2 1/2 832 (900-2 1/2)</td> <td>2080-2 3/4 832 (900-2 3/4)</td> </tr> <tr> <td colspan="5">WOPOG FIX MINIMUMS (DUAL VOR RECEIVERS REQUIRED)</td> </tr> <tr> <td>S-LOC 8</td> <td colspan="2">1580-3/4</td> <td colspan="2">333 (400-3/4)</td> </tr> <tr> <td><b>C</b> CIRCLING</td> <td>1820-1</td> <td>572 (600-1)</td> <td>2080-2 1/2 832 (900-2 1/2)</td> <td>2080-2 3/4 832 (900-2 3/4)</td> </tr> </tbody> </table>	CATEGORY	A	B	C	D	S-ILS 8	1497-3/4		250 (300-3/4)		S-LOC 8	1740-3/4	493 (500-3/4)	1740-1 1/8	493 (500-1 1/8)	<b>C</b> CIRCLING	1820-1	572 (600-1)	2080-2 1/2 832 (900-2 1/2)	2080-2 3/4 832 (900-2 3/4)	WOPOG FIX MINIMUMS (DUAL VOR RECEIVERS REQUIRED)					S-LOC 8	1580-3/4		333 (400-3/4)		<b>C</b> CIRCLING	1820-1	572 (600-1)	2080-2 1/2 832 (900-2 1/2)	2080-2 3/4 832 (900-2 3/4)	<table border="1"> <thead> <tr> <th colspan="5">FAF to MAP 5.4 NM</th> </tr> <tr> <th>Knots</th> <td>60</td> <td>90</td> <td>120</td> <td>150</td> <td>180</td> </tr> <tr> <th>Min:Sec</th> <td>5:24</td> <td>3:36</td> <td>2:42</td> <td>2:10</td> <td>1:48</td> </tr> </thead> </table>	FAF to MAP 5.4 NM					Knots	60	90	120	150	180	Min:Sec	5:24	3:36	2:42	2:10	1:48
CATEGORY	A	B	C	D																																																	
S-ILS 8	1497-3/4		250 (300-3/4)																																																		
S-LOC 8	1740-3/4	493 (500-3/4)	1740-1 1/8	493 (500-1 1/8)																																																	
<b>C</b> CIRCLING	1820-1	572 (600-1)	2080-2 1/2 832 (900-2 1/2)	2080-2 3/4 832 (900-2 3/4)																																																	
WOPOG FIX MINIMUMS (DUAL VOR RECEIVERS REQUIRED)																																																					
S-LOC 8	1580-3/4		333 (400-3/4)																																																		
<b>C</b> CIRCLING	1820-1	572 (600-1)	2080-2 1/2 832 (900-2 1/2)	2080-2 3/4 832 (900-2 3/4)																																																	
FAF to MAP 5.4 NM																																																					
Knots	60	90	120	150	180																																																
Min:Sec	5:24	3:36	2:42	2:10	1:48																																																