

WAAS CH 65905 W24A	APP CRS 244°	Rwy Idg TDZE Apt Elev	6802 560 569
--	------------------------	-----------------------------	---

RNAV (GPS) RWY 24

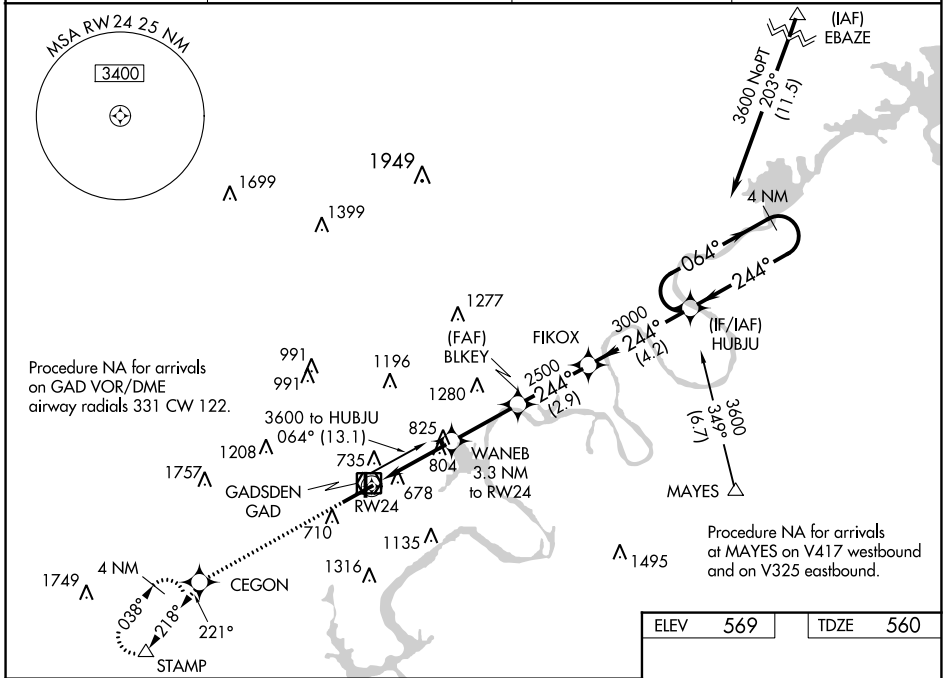
NORTHEAST ALABAMA RGNL (GAD)

RNP APCH-GPS.

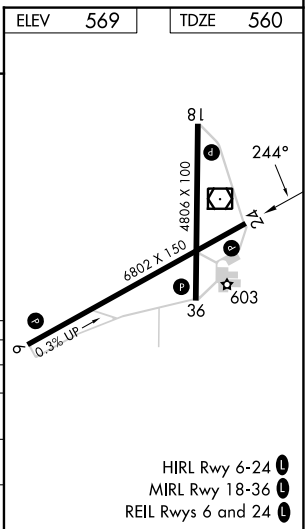
▼ For uncompensated Baro-VNAV systems, LNAV/VNAV NA below -16°C or above 54°C.
▲ When local altimeter setting is not received, use Annonisum altimeter setting and increase LPV DA to 847 feet and all visibilities 1/8 SM; increase LNAV/VNAV DA to 1082 feet and all visibilities 1/8 SM; increase all MDAs 80 feet and LNAV visibility Cat C/D 1/4 SM, and Circling visibility Cat C 1/2 SM. Baro-VNAV and VDP NA when using Annonisum altimeter setting.

MISSED APPROACH: Climb to 3600 direct CEGON and on track 221° to STAMP and hold, continue climb-in-hold to 3600.

AWOS-3PT 127.825	BIRMINGHAM APP CON 125.45 279.65	CLNC DEL 120.05 257.7	UNICOM 122.8 (CTAF)
----------------------------	--	---------------------------------	-------------------------------



3600	CEGON	STAMP				
↑	✦	tr 221°	△			
WANE 3.3 NM to RW24		BLKEY 2500	FIKOX 3000	HUBJU 3600	4 NM Holding Pattern	
RW24 1.7 NM to RW24		1620	2500	GP 3.00° TCH 43		
1.7 NM		1.6 NM	2.7 NM	2.9 NM	4.2 NM	
CATEGORY	A	B	C	D		
LPV DA		781-3/4	221 (300-3/4)			
LNAV/VNAV DA		1016-13/8	456 (500-13/8)			
LNAV MDA	1140-1	580 (600-1)	1140-15/8	580 (600-15/8)		
CIRCLING	1140-1	571 (600-1)	1440-2 1/2 871 (900-2 1/2)	1680-3 1111 (1200-3)		



SE-4, 03 OCT 2024 to 31 OCT 2024

SE-4, 03 OCT 2024 to 31 OCT 2024