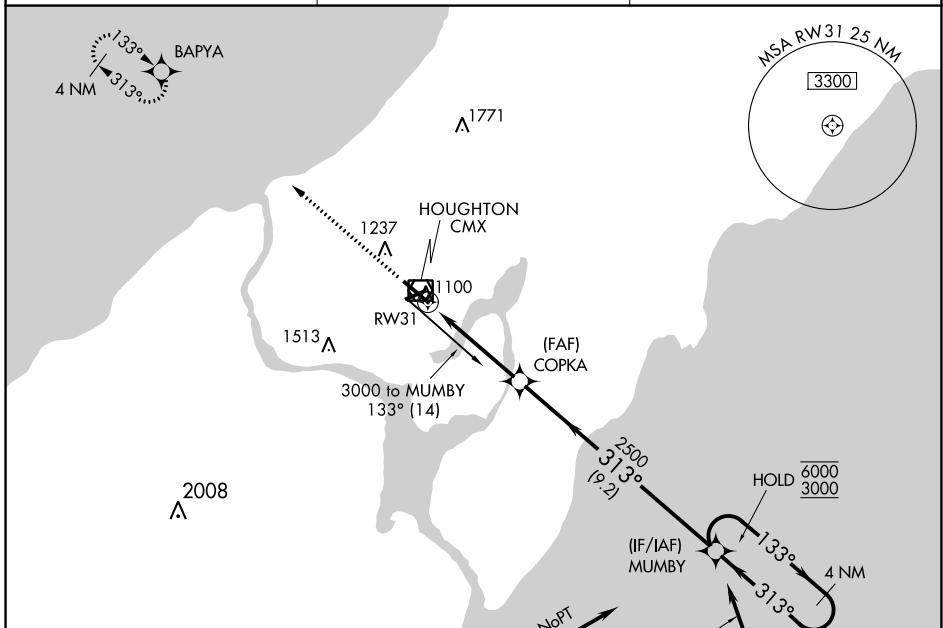


WAAS CH 45809 W31A	APP CRS 313°	Rwy Idg 6500 TDZE 1070 Apt Elev 1095
----------------------------------------	------------------------	-----------------------------------------------------------------

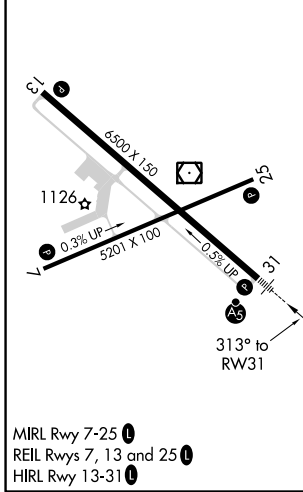
RNAV (GPS) RWY 31

HOUGHTON COUNTY MEML (CMX)

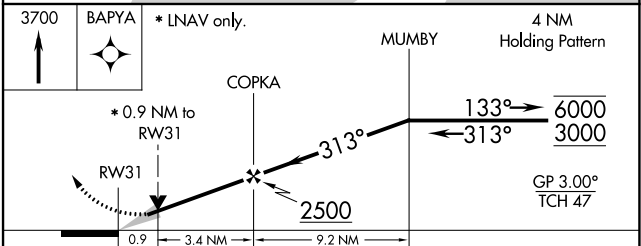
RNP APCH.		MALSR	MISSED APPROACH: Climb to 3700 direct BAPYA and hold.
ASOS 125.675		MINNEAPOLIS CENTER 133.55 379.1	UNICOM 122.7 (CTAF)



ELEV 1095	D	TDZE 1070
-----------	----------	-----------



MIRL Rwy 7-25
REIL Rwy 7, 13 and 25
HIRL Rwy 13-31



CATEGORY	A	B	C	D
LPV DA	1320-1/2 250 (300-1/2)			
LNAV/VNAV DA	1367-1/2	297 (300-1/2)	1367-3/4 297 (300-3/4)	
LNAV MDA	1420-1/2	350 (400-1/2)	1420-1 350 (400-1)	
C CIRCLING	1560-1 465 (500-1)	1600-1 505 (600-1)	1680-1 1/2 585 (600-1 1/2)	1820-2 1/4 725 (700-2 1/4)

EC-1, 02 DEC 2021 to 30 DEC 2021

EC-1, 02 DEC 2021 to 30 DEC 2021