

WAAS CH <b>93533</b> <b>W14A</b>	APP CRS <b>133°</b>	Rwy Idg TDZE Apt Elev	<b>6501</b> <b>1095</b> <b>1095</b>
--	------------------------	-----------------------------	---

# RNAV (GPS) RWY 14

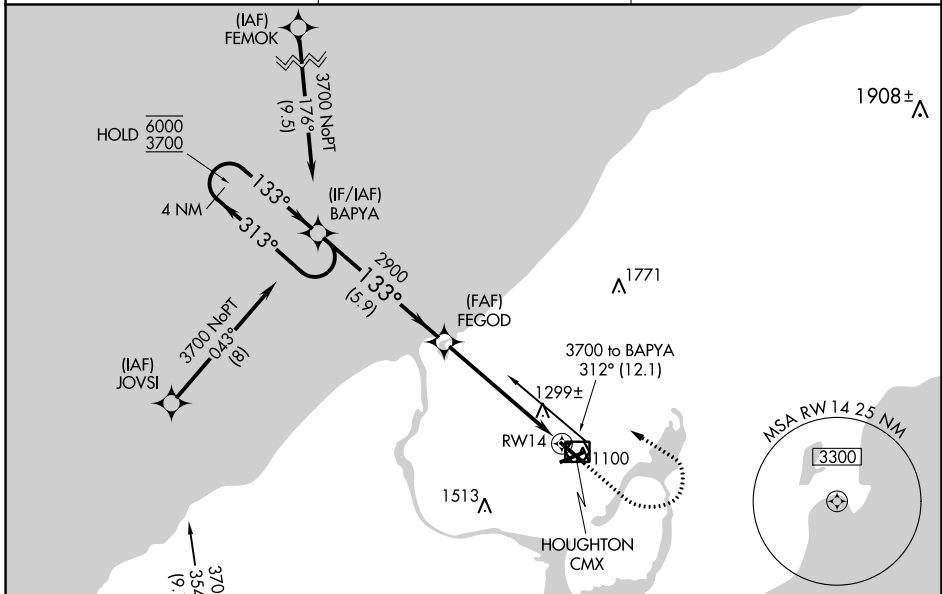
HOUGHTON COUNTY MEML (CMX)

RNP APCH - GPS.

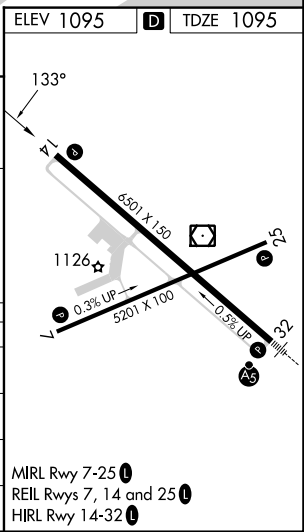
**⚠** Rwy 14 helicopter visibility reduction below ¾ SM NA.  
For uncompensated Baro-VNAV systems,  
LNAV/VNAV NA below -21°C or above 54°C.

**MISSED APPROACH:** Climb to 2400 then climbing left turn to 3700 direct BAPYA and hold.

ASOS <b>125,675</b>	MINNEAPOLIS CENTER <b>133.55 379.1</b>	UNICOM <b>122.7 (CTAF)</b>
------------------------	---	-------------------------------



4 NM Holding Pattern		VGSI and RNAV glidepath not coincident (VGSI Angle 3.00/TCH 43).		2400	3700	BAPYA
GP 3.00° TCH 46		FEGOD		1.3 NM to RWY 14		
6000 / 3700		133° / 313°		5.9 NM / 4.2 NM / 1.3		
CATEGORY	A	B	C	D		
LPV DA		1414-7/8	319 (400-7/8)			
LNAV/VNAV DA		1626-1 1/2	531 (600-1 1/2)			
LNAV MDA	1560-1	465 (500-1)	1560-1 3/8	465 (500-1 3/8)		
<b>C</b> CIRCLING	1620-1 525 (600-1)	1660-1 565 (600-1)	1700-1 3/4 605 (700-1 3/4)	1820-2 1/4 725 (800-2 1/4)		



MIRL Rwy 7-25  
REIL Rws 7, 14 and 25  
HIRL Rwy 14-32

EC-1, 03 OCT 2024 to 31 OCT 2024

EC-1, 03 OCT 2024 to 31 OCT 2024