

WAAS CH 93533 W13A	APP CRS 133°	Rwy Idg TDZE Apt Elev	6500 1095 1095
--	------------------------	-----------------------------	---

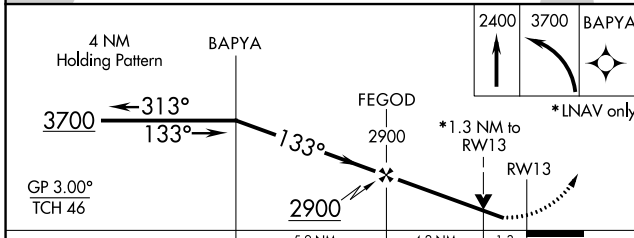
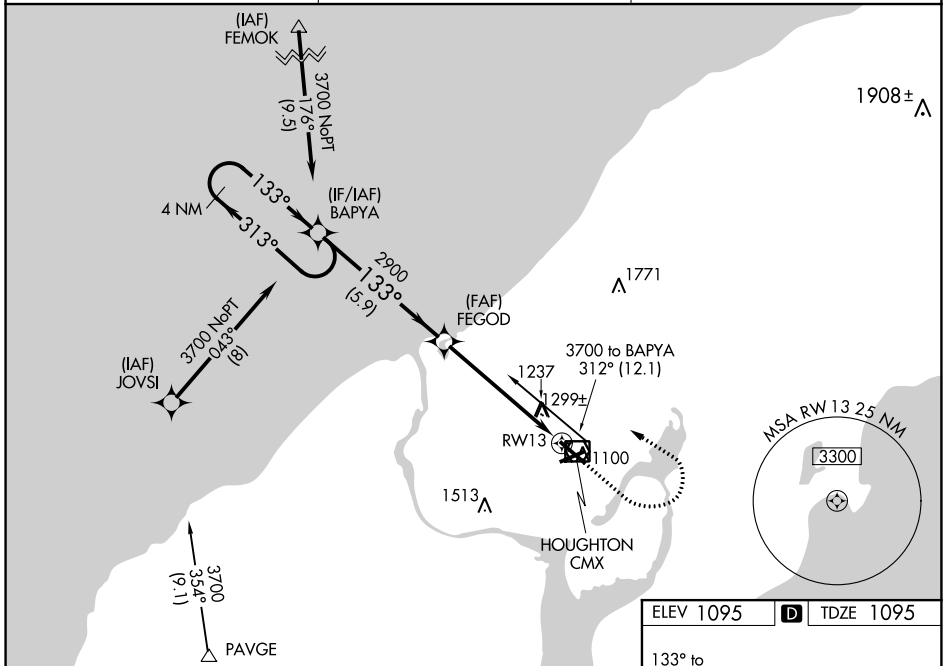
RNAV (GPS) RWY 13

HOUGHTON COUNTY MEML (CMX)

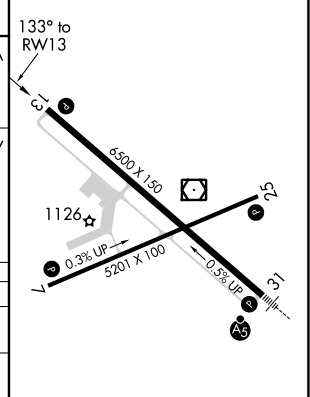
⚠ For uncompensated Baro-VNAV systems, LNAV/VNAV NA below -21°C (-5°F) or above 54°C (130°F). DME/DME RNP-0.3 NA. Baro-VNAV and VDP NA when using Marquette altimeter setting. When local altimeter setting not received, use Marquette altimeter setting and increase all DA 171 feet and all visibilities ¼ mile. Increase all MDA 180 feet and all Cat C/D visibilities ½ mile. Helicopter visibility reduction below ¼ SM NA.

ⓘ MISSED APPROACH: Climb to 2400 then climbing left turn to 3700 direct BAPYA and hold.

ASOS 125.675	MINNEAPOLIS CENTER 133.55 379.1	UNICOM 122.7 (CTAF) ⓘ
------------------------	---	---------------------------------



ELEV 1095	D TDZE 1095
-----------	--------------------



CATEGORY	A	B	C	D
LPV DA		1404-1	309 (400-1)	
LNAV/VNAV DA		1626-1 ⁷ / ₈	531 (600-1 ⁷ / ₈)	
LNAV MDA	1560-1	465 (500-1)	1560-1 ³ / ₈	465 (500-1 ³ / ₈)
C CIRCLING	1620-1 525 (600-1)	1660-1 565 (600-1)	1700-1 ³ / ₄ 605 (700-1 ³ / ₄)	1900-2 ¹ / ₂ 805 (900-2 ¹ / ₂)

MIRL Rwy 7-25
REIL Rwys 7 and 25
REIL Rwy 13 ⓘ
HIRL Rwy 13-31 ⓘ

EC-1, 02 DEC 2021 to 30 DEC 2021

EC-1, 02 DEC 2021 to 30 DEC 2021