

LOC I-CMX <b>110.3</b> Chan <b>40</b>	APP CRS <b>133°</b>	Rwy Idg <b>6500</b> TDZE <b>1095</b> Apt Elev <b>1095</b>
---	------------------------	---

# LOC BC RWY 13

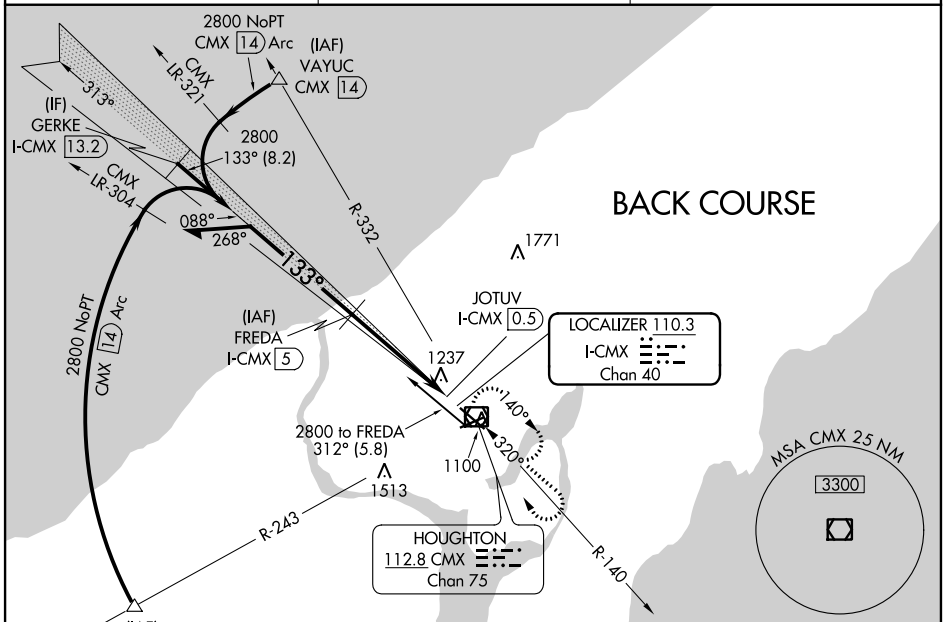
HOUGHTON COUNTY MEML (CMX)

DME required.

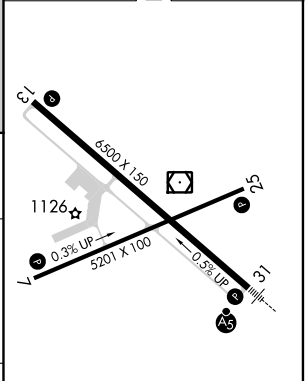
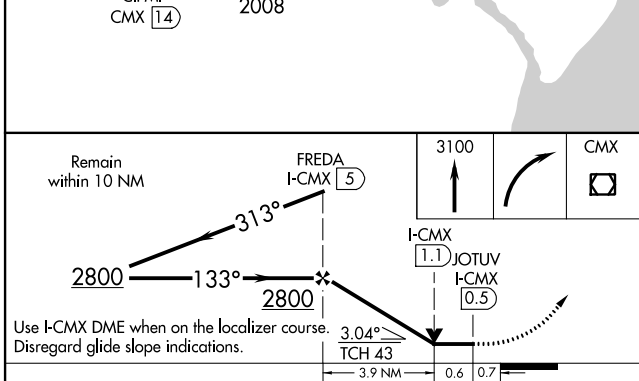
**⚠** Rwy 13 helicopter visibility reduction below 3/4 SM NA.  
Request MRL Rwy 7-25 - CTAF.

MISSED APPROACH: Climb to 3100 then right turn direct CMX VOR/DME and hold.

ASOS <b>125.675</b>	MINNEAPOLIS CENTER <b>133.55 379.1</b>	UNICOM <b>122.7 (CTAF) 0</b>
------------------------	---	---------------------------------



ELEV 1095	<b>D</b> TDZE 1095
-----------	--------------------



CATEGORY	A	B	C	D
S- LOC 13	1540-1	445 (500-1)	1540-1 1/4 445 (500-1 1/4)	1540-1 1/2 445 (500-1 1/2)
<b>C</b> CIRCLING	1560-1 465 (500-1)	1600-1 505 (600-1)	1680-1 1/2 585 (600-1 1/2)	1820-2 1/4 725 (700-2 1/4)

MRL Rwy 7-25 **0**  
REIL Rws 7, 13 and 25 **0**  
HIRL Rwy 13-31 **0**

EC-1, 02 DEC 2021 to 30 DEC 2021

EC-1, 02 DEC 2021 to 30 DEC 2021