

LOC I-MQY 111.1	APP CRS 321°	Rwy Idg TDZE Apt Elev	8038 518 543
---------------------------	------------------------	-----------------------------	---

ILS or LOC/DME RWY 32

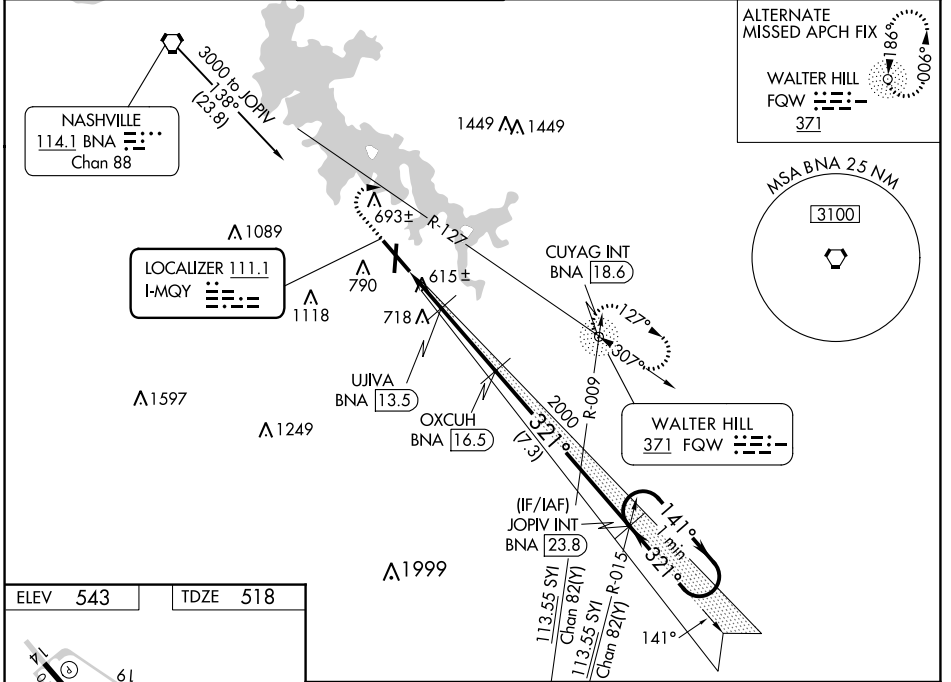
SMYRNA (MQY)

⚠ DME from BNA VORTAC, simultaneous reception of I-MQY and BNA DME required. For inop MALSRR, increase S-LOC 32 Cats C/D visibility to 1 mile. For inop MALSRR when using Nashville Intl altimeter setting, increase S-LOC 32 Cats C/D visibility 3/8 mile. When local altimeter setting not received, use Nashville Intl altimeter setting and increase all DA to 749 feet and all MDA 40 feet; increase S-LOC 32 Cats C/D visibility 1/8 mile and increase Circling Cats C/D visibility 1/4 mile. VDP NA when using Nashville Intl altimeter setting.

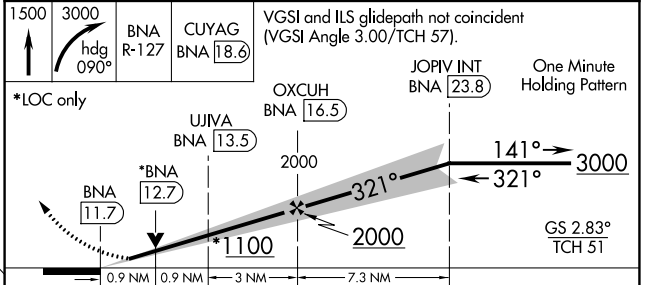


MISSED APPROACH: Climb to 1500 then climbing right turn to 3000 on heading 090° and BNA VORTAC R-127 to CUYAG INT/ BNA VORTAC 18.6 DME and hold.

AWOS-3PT 119.125	NASHVILLE APP CON 118.4 360.7	SMYRNA TOWER ✳ 118.5 (CTAF) 0 233.1	GND CON 121.4	CLNC DEL 121.4	CLNC DEL 121.7 (When twr closed)	UNICOM 122.95
----------------------------	---	---	-------------------------	--------------------------	---	-------------------------



ELEV 543	TDZE 518
----------	----------



CATEGORY	A	B	C	D
S-ILS 32	718-1/2 200 (200-1/2)			
S-LOC 32	880-1/2	362 (400-1/2)	880-5/8	362 (400-5/8)
C CIRCLING	1100-1 557 (600-1)	1200-1 657 (700-1)	1260-2 717 (800-2)	1480-2 3/4 937 (1000-2 3/4)

SE-1, 03 OCT 2024 to 31 OCT 2024

SE-1, 03 OCT 2024 to 31 OCT 2024