

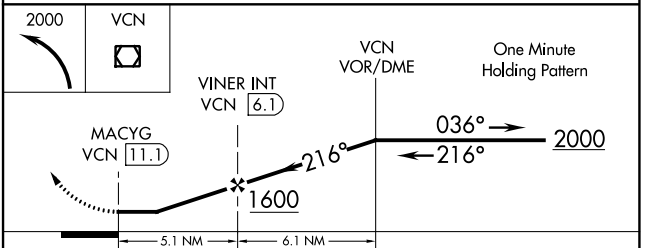
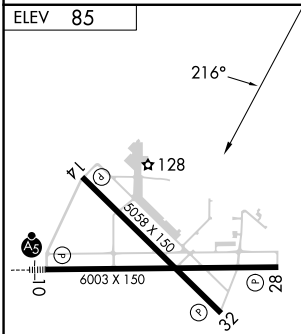
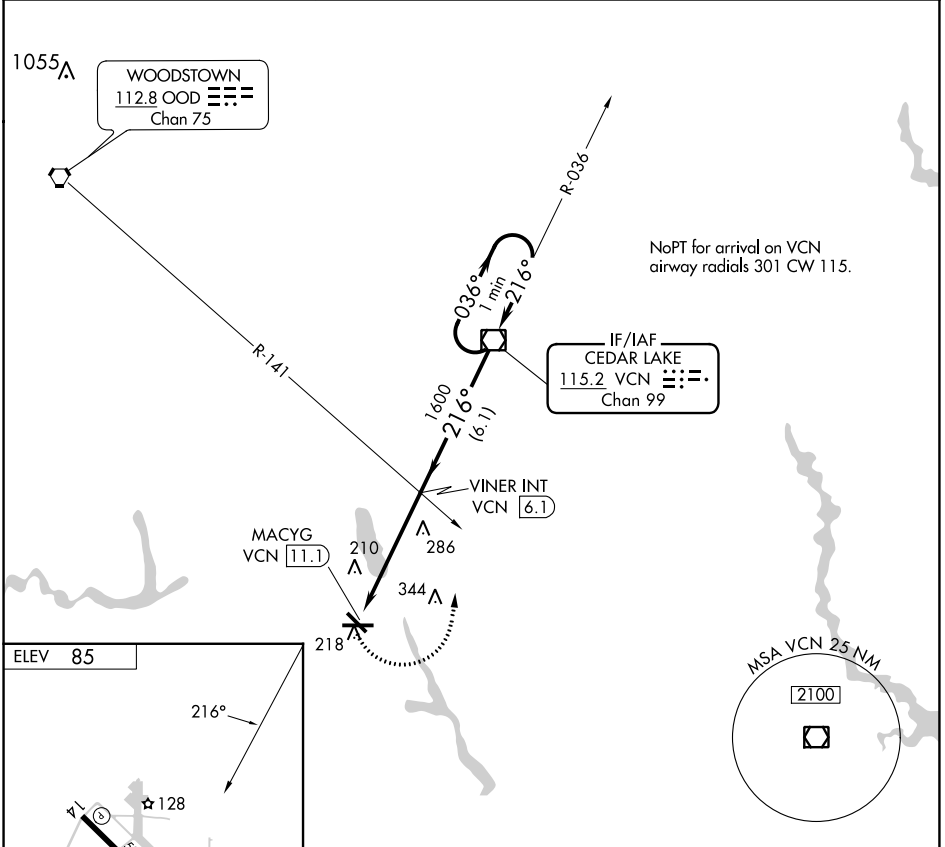
VOR/DME VCN 115.2 Chan 99	APP CRS 216°	Rwy Idg TDZE Apt Elev N/A N/A 85
-----------------------------------------------	------------------------	----------------------------------------------------------------------

VOR-A
MILLVILLE MUNI (MIV)

▼ When local altimeter setting not received, use Atlantic City altimeter setting and increase all MDAs 60 feet and visibility Circling Cat C ¼ SM.

MISSED APPROACH: Climbing left turn to 2000 direct VCN VOR/DME and hold.

ASOS 119.6	ATLANTIC CITY APP CON 124.6 327.125	UNICOM 123.0 (CTAF) 0
----------------------	-----------------------------------------------	---------------------------------



MIRL Rwy 10-28 and 14-32

FAF to MAP	5.1 NM				
Knots	60	90	120	150	180
Min:Sec	5:06	3:24	2:33	2:02	1:42

CATEGORY	A	B	C	D
CIRCLING	600-1	515 (600-1)	660-1½ 575 (600-1½)	660-2 575 (600-2)

NE-2, 31 OCT 2024 to 28 NOV 2024

NE-2, 31 OCT 2024 to 28 NOV 2024