

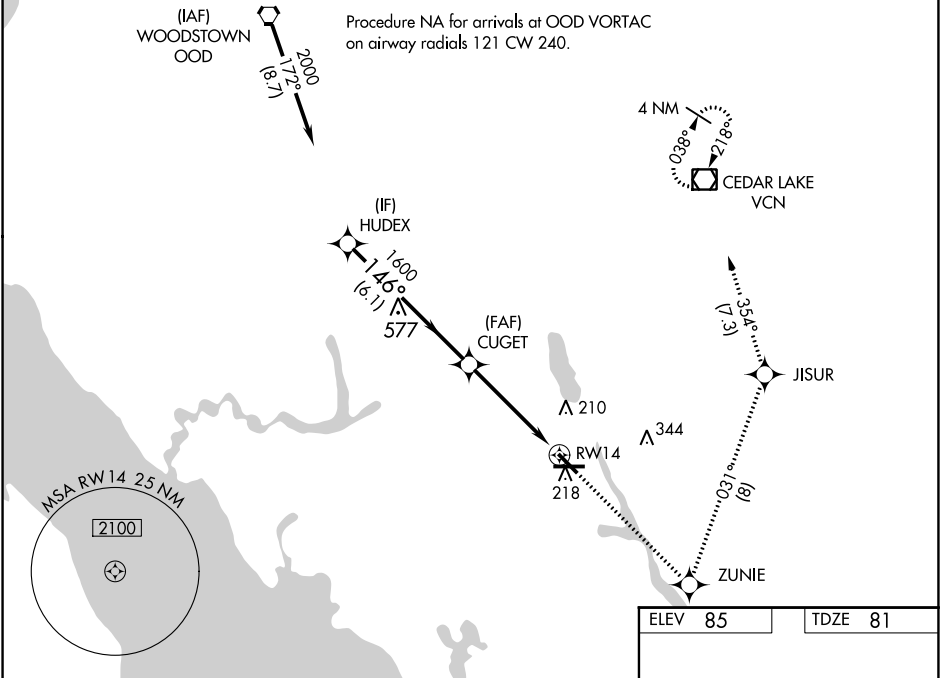
WAAS CH 82000 W14A	APP CRS 146°	Rwy Idg TDZE Apt Elev	5058 81 85
--	------------------------	-----------------------------	---------------------------------------

RNAV (GPS) RWY 14

MILLVILLE MUNI (MIV)

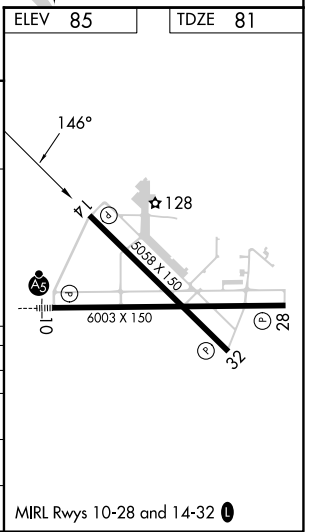
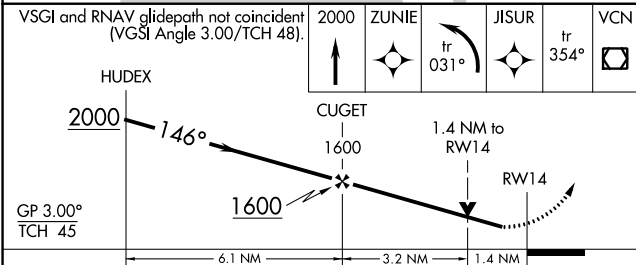
RNP APCH-GPS.	<p>▽ Rwy 14 helicopter visibility reduction below $\frac{3}{4}$ SM NA. For uncompensated Baro-VNAV systems, LNAV/VNAV NA below -15°C or above 54°C.</p> <p>⚠ MISSED APPROACH: Climb to 2000 direct ZUNIE and left turn on track 031° to JISUR and on track 354° to VCN VOR/DME and hold.</p>
---------------	---

ASOS 119.6	ATLANTIC CITY APP CON 124.6 327.125	UNICOM 123.0 (CTAF) 0
----------------------	---	---------------------------------



NE-2, 31 OCT 2024 to 28 NOV 2024

NE-2, 31 OCT 2024 to 28 NOV 2024



CATEGORY	A	B	C	D
LPV DA		377- $\frac{7}{8}$	296 (300- $\frac{7}{8}$)	
LNAV/VNAV DA		550-1 $\frac{3}{8}$	469 (500-1 $\frac{3}{8}$)	
LNAV MDA	580-1	499 (500-1)	580-1 $\frac{3}{8}$	499 (500-1 $\frac{3}{8}$)
CIRCLING	580-1	495 (500-1)	660-1 $\frac{1}{2}$ 575 (600-1 $\frac{1}{2}$)	660-2 575 (600-2)