

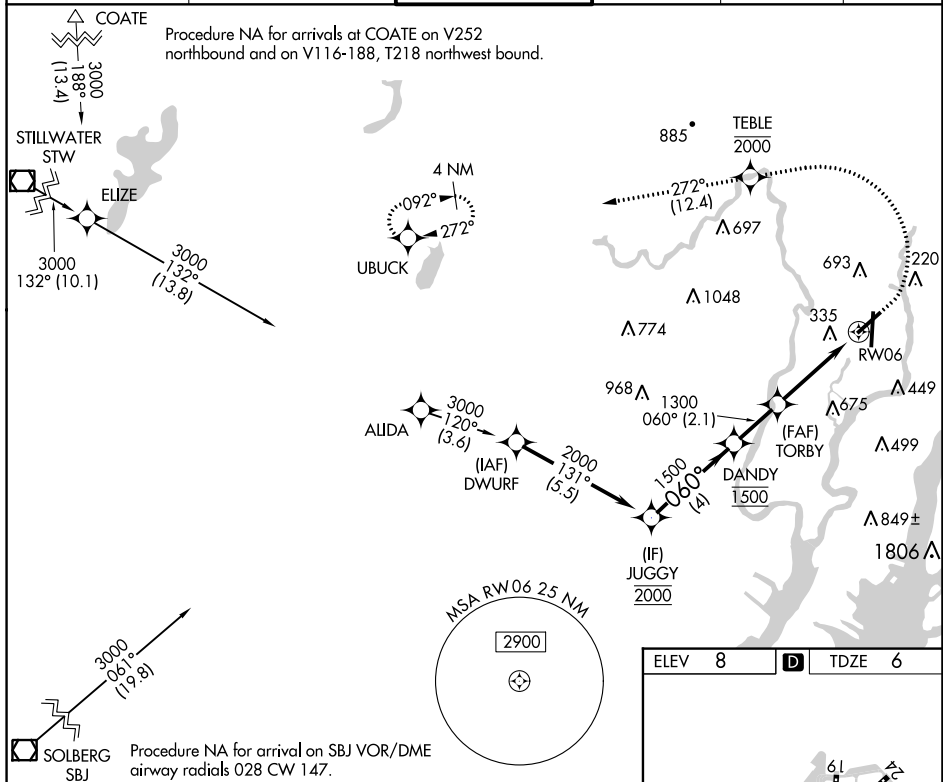
WAAS CH <b>65707</b> <b>W06A</b>	APP CRS <b>060°</b>	Rwy Idg TDZE Apt Elev	<b>6013</b> <b>6</b> <b>8</b>
--	------------------------	-----------------------------	-------------------------------------

# RNAV (GPS) Y RWY 6

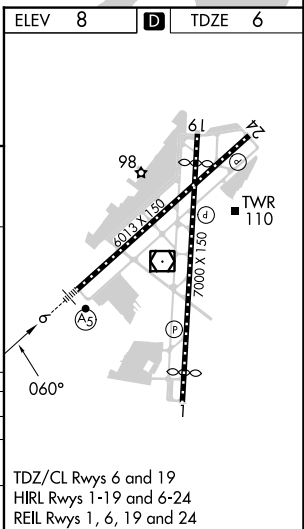
TETERBORO (TEB)

RNP APCH - GPS. RADAR required.	MALSR 	MISSED APPROACH: Climb to 1000, then climbing left turn to 2000 direct TEBLE, cross TEBLE at or below 2000, then climb to 3000 on track 272° to UBUCK and hold.
<p>⚠ Circling NA for Cats B, C, and D northwest of Rwy 6 and 19. For inop ALS, increase LPV all Cats visibility to RVR 5500 and increase LNAV Cats C/D visibility to 2½ SM.</p>		

D-ATIS <b>114.2 132.85</b>	NEWARK APP CON <b>127.6 379.9</b>	TETERBORO TOWER <b>119.5</b>	GND CON <b>121.9</b>	CLNC DEL <b>128.05</b>	CPDLC
-------------------------------	--------------------------------------	---------------------------------	-------------------------	---------------------------	-------



JUGGY	DANDY	TORBY	TEBLE	3000	UBUCK
2000	1500	1300	2000	↑	↑
GP 3.00° TCH 53	060°	2.3 NM to RWY06	↑	↑	↑
4 NM	2.1 NM	1.6 NM	2.3 NM	↑	↑
CATEGORY	A	B	C	D	
LPV DA	369/35		363 (400-¾)		
LNAV MDA	800/24 794 (800-½)	800/40 794 (800-¾)	800-1¼	794 (800-1¼)	
CIRCLING	800-1 792 (800-1)	800-1¼ 792 (800-1¼)	820-2½ 812 (900-2½)	1040-3 1032 (1100-3)	



NE-2, 03 OCT 2024 to 31 OCT 2024

NE-2, 03 OCT 2024 to 31 OCT 2024