

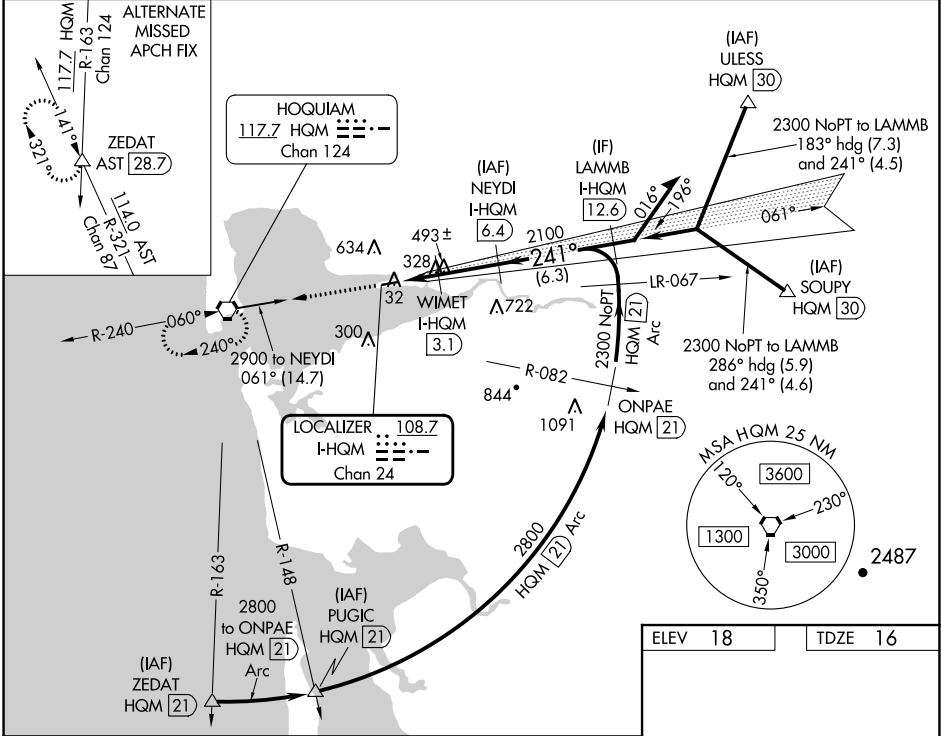
LOC/DME I-HQM <b>108.7</b> Chan 24	APP CRS <b>241°</b>	Rwy Idg <b>5000</b> TDZE <b>16</b> Apt Elev <b>18</b>
--	------------------------	---

# ILS or LOC RWY 24

BOWERMAN FLD (HQM)

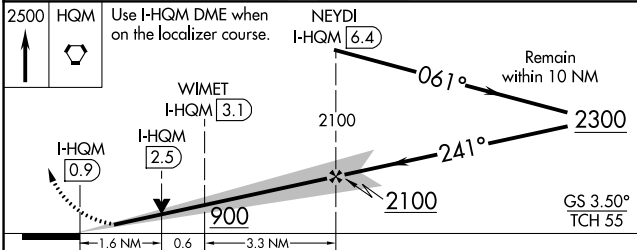
DME required.	MALSR	MISSED APPROACH: Climb to 2500 direct HQM VORTAC and hold.
<p>⚠ Circling NA northwest of Rwy 6-24. When local altimeter setting not received, procedure NA. For inop ALS, increase S-ILS 24 Cat C visibility to ¾ and S-LOC 24 Cat C visibility to 1 ½ SM.</p>		

ASOS <b>135.775</b>	SEATTLE CENTER <b>128.3 269.0</b>	UNICOM <b>122.7 (CTAF)</b>
------------------------	--------------------------------------	-------------------------------

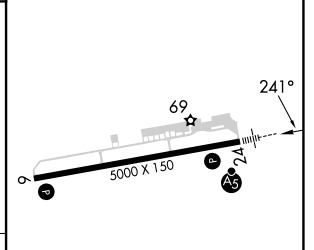


NW-1, 31 OCT 2024 to 28 NOV 2024

NW-1, 31 OCT 2024 to 28 NOV 2024



ELEV 18	TDZE 16
---------	---------



CATEGORY	A	B	C	D
S-ILS 24	216-½	200 (200-½)	286-½ 270 (300-½)	NA
S-LOC 24	580-½	564 (600-½)	580-1¼ 564 (600-1¼)	NA
CIRCLING	580-1	562 (600-1)	800-2¼ 782 (800-2¼)	NA

REIL Rwy 6	HIRL Rwy 6-24
------------	---------------