

APP CRS	Rwy Idg	9007
200°	TDZE	2977
	Apt Elev	2977

RNAV (RNP) RWY 20

GLACIER PARK INTL (GPI)

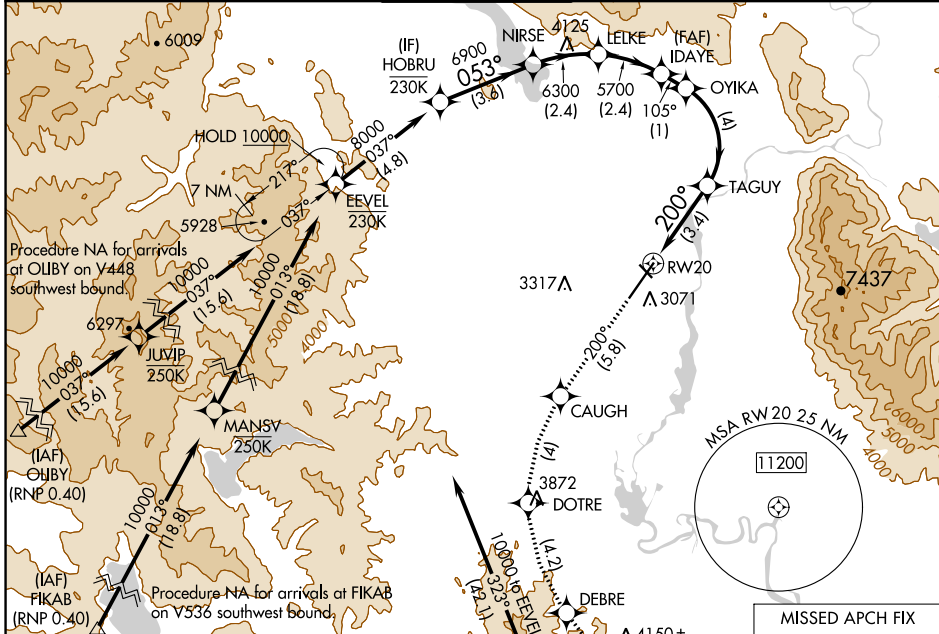
RNP AR APCH - GPS.

⚠ For uncompensated Baro-VNAV systems, procedure NA below -25°C or above 54°C.

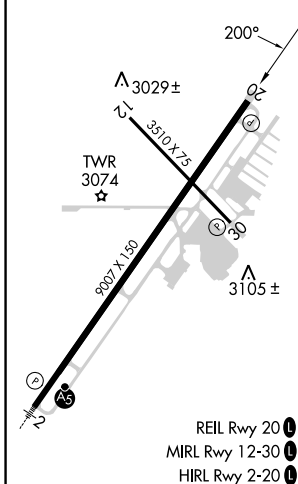
MISSED APPROACH: Climb to 10000 on track 200° to CAUGH, left turn to DOTRE, left turn to DEBRE, and on track 128° to ANGL and hold, continue climb-in-hold to 10000.

*Missed approach requires minimum climb of 230 feet per NM to 6800.

ATIS 132.625	SALT LAKE CENTER 127.075 244.875	GLACIER TOWER* 124.55 (CTAF) 0	GND CON 121.6	UNICOM 122.95
------------------------	--	--	-------------------------	-------------------------



ELEV 2977	D	TDZE 2977
-----------	----------	-----------



Procedure NA for arrivals at SKOTT on V231 southbound.

Procedure NA for arrivals at OLIBY on V448 southwest bound.

Procedure NA for arrivals at FIKAB on V536 southwest bound.

MISSED APCH FIX

7 NM $\begin{matrix} \curvearrowright \\ 1620 \\ \curvearrowleft \end{matrix}$ ANGL

10000	CAUGH	DOTRE	DEBRE	tr 128°	ANGIL	HOBRU
tr 200°	\curvearrowright	\curvearrowright	\curvearrowright	\triangle	\triangle	
	TAGUY	OYIKA	IDAYE	LELKE	NIRSE	8000
	RW20	4100	5700	5700	6300	6900
			105°			
			200°			
						GP 3.00°
						TCH 45

CATEGORY	A	B	C	D
RNP 0.10 DA*	3346-1 369 (400-1)			
RNP 0.30 DA*	3418-1 3/8 441 (500-1 3/8)			
RNP 0.30 DA	3637-1 1/8 660 (700-1 1/8)			

AUTHORIZATION REQUIRED

NW-1, 31 OCT 2024 to 28 NOV 2024

NW-1, 31 OCT 2024 to 28 NOV 2024