

APP CRS	Rwy Idg	3510
301°	TDZE	2974
	Apt Elev	2977

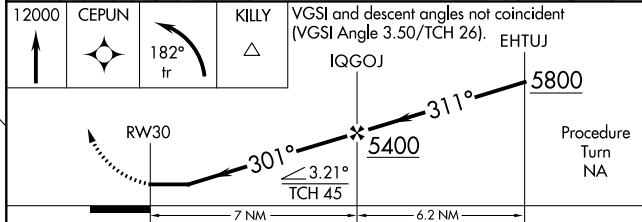
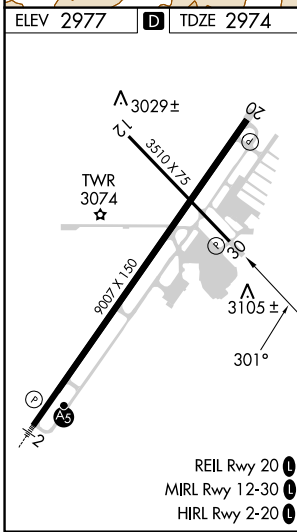
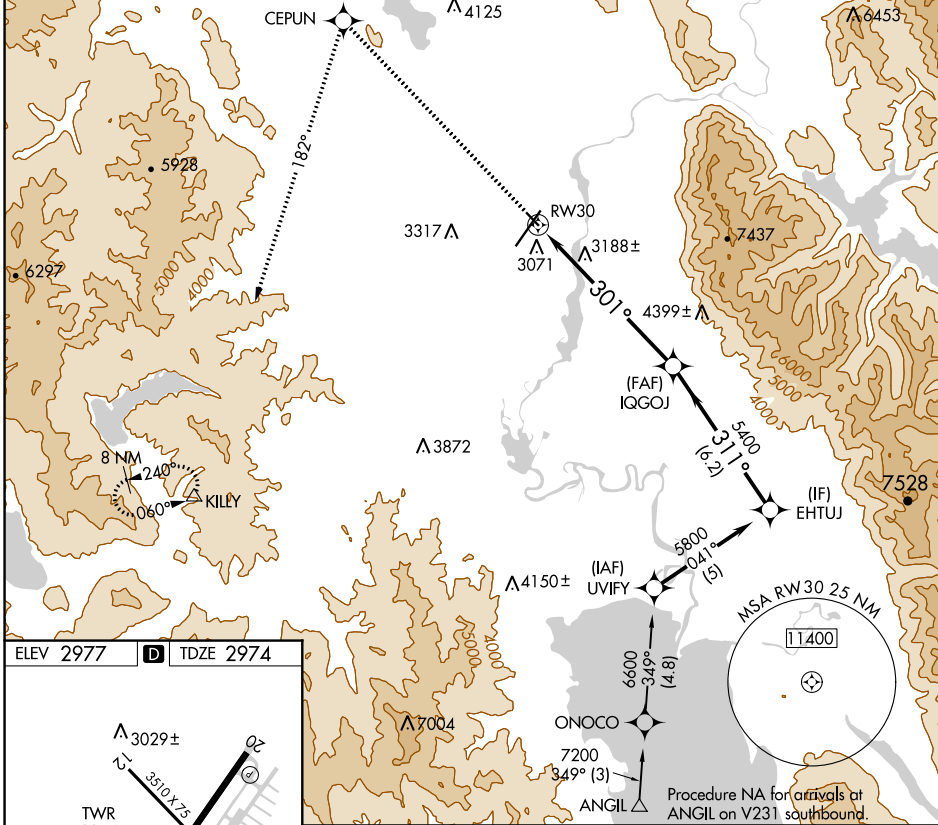
RNAV (GPS) RWY 30

GLACIER PARK INTL (GPI)

RNP APCH.
 ▼
 ▲ Rwy 30 helicopter visibility reduction below ¾ SM NA.
 ☁ -1.5°C

MISSED APPROACH: Climb to 12000 direct CEPUN and left turn via track 182° to KILLY and hold, continue climb-in-hold to 12000.

ATIS 132.625	SALT LAKE CENTER 127.075 244.875	GLACIER TOWER* 124.55 (CTAF) 0	GND CON 121.6	UNICOM 122.95
------------------------	--------------------------------------------	------------------------------------------	-------------------------	-------------------------



CATEGORY	A	B	C	D
LNNAV MDA	3500-1	526 (600-1)	3500-1½	526 (600-1½)
C CIRCLING	3520-1 543 (600-1)	3580-1 603 (700-1)	3640-1¾ 663 (700-1¾)	3760-2½ 783 (800-2½)

NW-1, 31 OCT 2024 to 28 NOV 2024

NW-1, 31 OCT 2024 to 28 NOV 2024