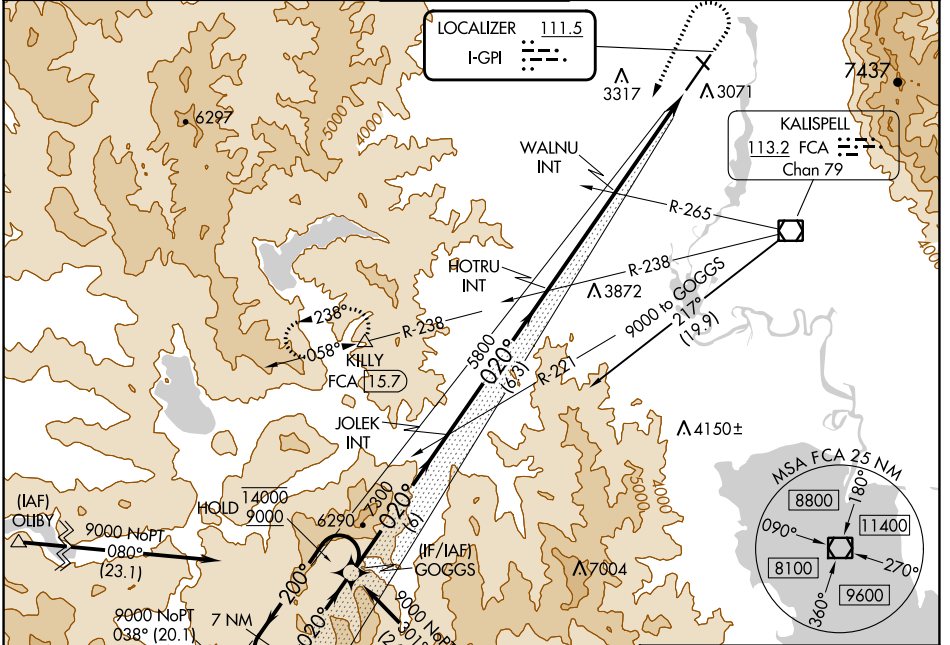


LOC I-GPI 111.5	APP CRS 020°	Rwy ldg 9007 TDZE 2966 Apt Elev 2977
---------------------------	------------------------	--

ILS or LOC RWY 2

GLACIER PARK INTL (GPI)

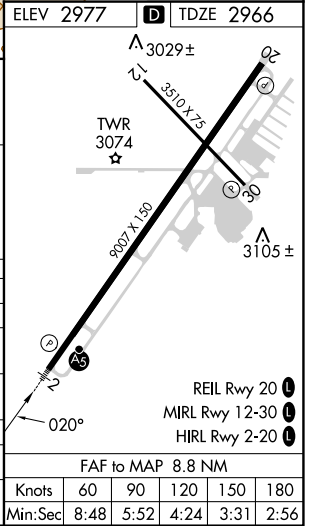
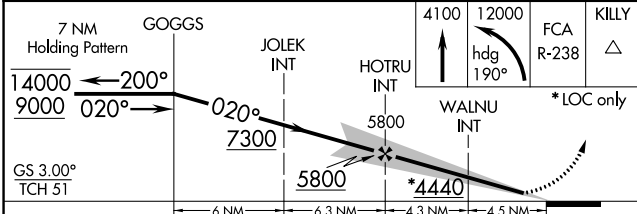
DME required. RNAV 1-GPS or RADAR required for procedure entry.		MALSR	MISSED APPROACH: Climb to 4100 then climbing left turn to 12000 on heading 190° and FCA VOR/DME R-238 to KILLY/15.7 DME and hold, continue climb-in-hold to 12000.	
Inop table does not apply to S-LOC 2 Cats C/D.				
-1.5°C				
ATIS 132.625	SALT LAKE CENTER 127.075 244.875	GLACIER TOWER* 124.55 (CTAF) 0	GND CON 121.6	UNICOM 122.95



NW-1, 31 OCT 2024 to 28 NOV 2024

NW-1, 31 OCT 2024 to 28 NOV 2024

ELEV 2977	D TDZE 2966
-----------	--------------------



7 NM Holding Pattern	GOGGS	JOLEK INT	HOTRU INT	WALNU INT	FCA R-238	KILLY
14000 ← 200°	9000 → 020°	7300	5800	*4440		
GS 3.00°	TCH 51					
CATEGORY		A	B	C	D	
S-ILS 2	3166-1/2		200 (200-1/2)			
S-LOC 2	4440-3/4	4440-1	4440-3	1474 (1500-3)		
CIRCLING	1474 (1500-3/4)	1474 (1500-1)	4440-1 1/4	1463 (1500-1 1/2)	4440-3	1463 (1500-3)
WALNU FIX MINIMUMS (DUAL VOR RECEIVERS REQUIRED)						
S-LOC 2	3520-1/2	554 (600-1/2)	3520-1 1/8	554 (600-1 1/8)		
CIRCLING	3520-1	3580-1	3640-1 3/4	3760-2 1/2		
	543 (600-1)	603 (700-1)	663 (700-3/4)	783 (800-2 1/2)		

FAF to MAP 8.8 NM					
Knots	60	90	120	150	180
Min:Sec	8:48	5:52	4:24	3:31	2:56