

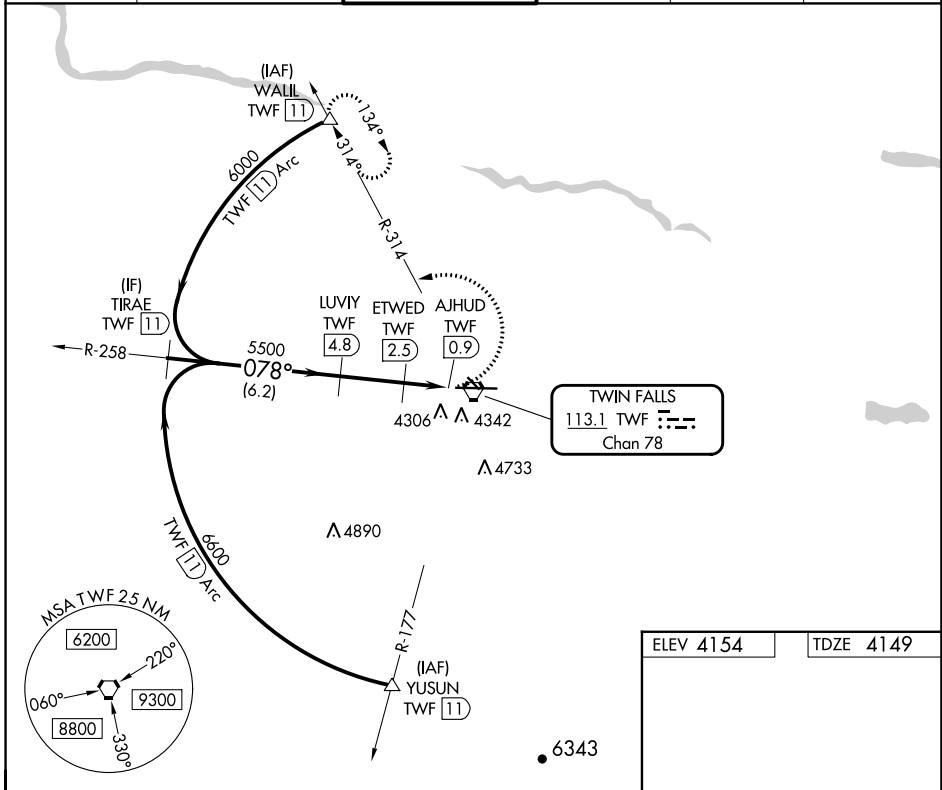
VORTAC TWF <b>113.1</b> Chan <b>78</b>	APP CRS <b>078°</b>	Rwy Idg TDZE Apt Elev	<b>8704</b> <b>4149</b> <b>4154</b>
--	------------------------	-----------------------------	---

**VOR/DME RWY 8**  
JOSLIN FLD/MAGIC VALLEY RGNL (TWF)

**⚠** Circling to Rwy 30 NA at night. VDP NA with Jerome altimeter setting. When local altimeter setting not received, use Jerome altimeter setting and increase all MDA 60 feet and S-8 Cats C and D visibility ¼ mile and Circling Cat C visibility ¼ mile.

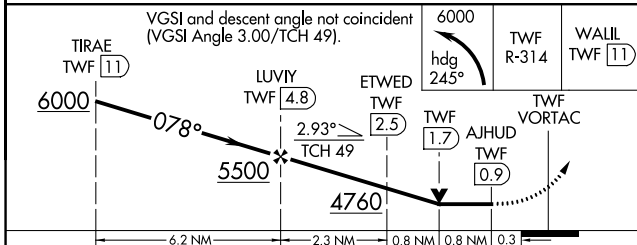
**⚠** MISSED APPROACH: Climbing left turn to 6000 on heading 245° and TWF R-314 to WALL/TWF 11 DME and hold.

ASOS <b>135.025</b>	TWIN FALLS APP CON* <b>126.7 353.75</b>	TWIN FALLS TOWER* <b>118.2 (CTAF) 0 317.5</b>	GND CON <b>121.7</b>	CLNC DEL <b>123.65</b>	UNICOM <b>122.95</b>
------------------------	--	--	-------------------------	---------------------------	-------------------------

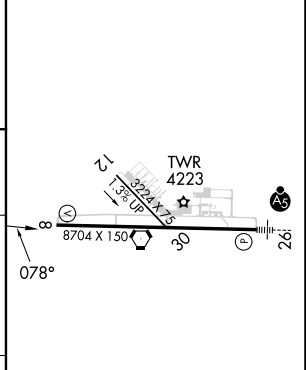


NW-1, 08 AUG 2024 to 05 SEP 2024

NW-1, 08 AUG 2024 to 05 SEP 2024



ELEV 4154	TDZE 4149
-----------	-----------



CATEGORY	A	B	C	D
S-8	4560-1	411 (500-1)	4560-1 1/8	411 (500-1 1/8)
<b>C</b> CIRCLING	4700-1 546 (600-1)	4780-1 626 (700-1)	5100-2 3/4 946 (1000-2 3/4)	5100-3 946 (1000-3)

REIL Rwy 8 **0**  
HIRL Rwy 8-26 **0**