

| | | | |
|--|------------------------|-----------------------------|---|
| VORTAC TWF 113.1 Chan 78 | APP CRS 248° | Rwy Idg TDZE Apt Elev | 8704 4154 4154 |
|--|------------------------|-----------------------------|---|

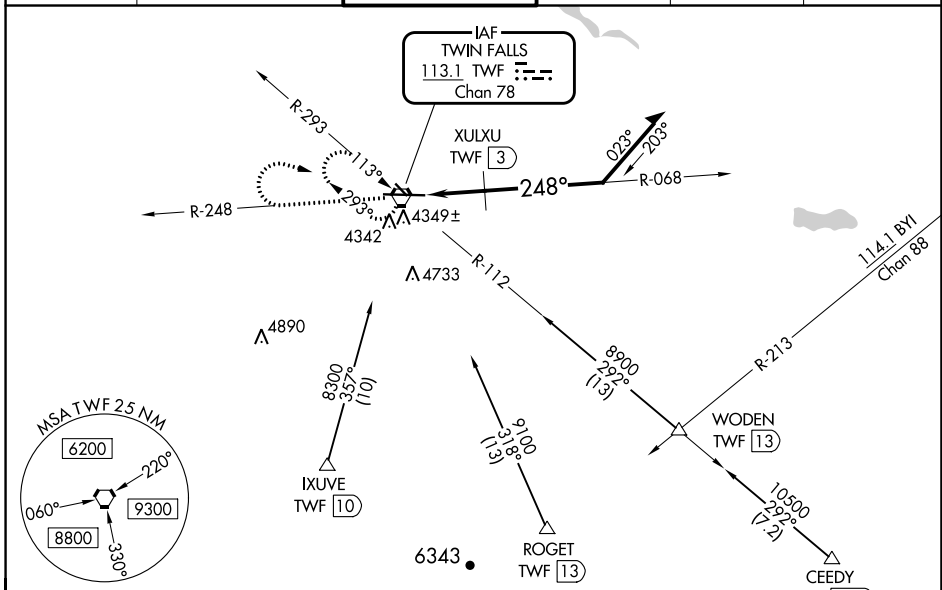
VOR RWY 26
JOSLIN FLD/MAGIC VALLEY RGNL (TWF)

⚠ Night landing: Rwy 30 NA. VDP NA with Jerome altimeter setting. When local altimeter setting not received, use Jerome altimeter setting and increase all MDA 60 feet; increase S-26 Cat A visibility ¼ mile, Cat C/D ½ mile, Circling Cat C ¼ mile, and XULXU FIX S-26 Cat C/D ½ mile. For inop MALS, increase S-26 Cat C/D visibility to 2½ miles; when using Jerome altimeter setting increase XULXU FIX S-26 Cat C/D visibility to 1½ mile.

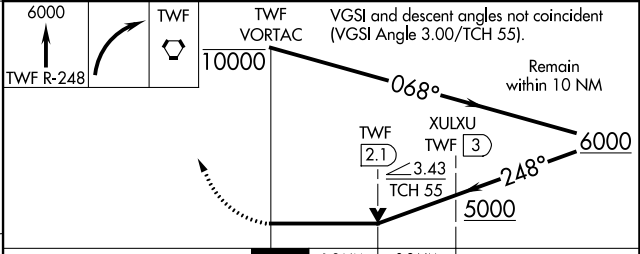
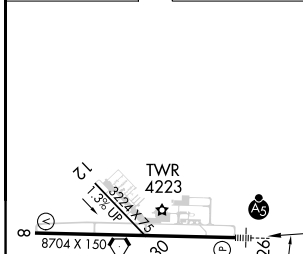
MALS
A5

MISSED APPROACH: Climb to 6000 on TWF VORTAC R-248 then right turn direct TWF VORTAC and hold.

| | | | | | |
|------------------------|---|---|-------------------------|---------------------------|-------------------------|
| ASOS 135.025 | TWIN FALLS APP CON * 126.7 353.75 | TWIN FALLS TOWER * 118.2 (CTAF) 0 317.5 | GND CON 121.7 | CLNC DEL 123.65 | UNICOM 122.95 |
|------------------------|---|---|-------------------------|---------------------------|-------------------------|



| | |
|-----------|-----------|
| ELEV 4154 | TDZE 4154 |
|-----------|-----------|



| CATEGORY | A | B | C | D |
|--------------------|-------------------------|-----------------------|---------------------------|------------------------|
| S-26 | 5000-½ 846 (900-½) | 5000-¾ 846 (900-¾) | 5000-1⅞ 846 (900-1⅞) | 846 (900-1⅞) |
| C CIRCLING | 5000-1¼ 846 (900-1¼) | 846 (900-1¼) | 5100-2¾ 946 (1000-2¾) | 5100-3 946 (1000-3) |
| XULXU FIX MINIMUMS | | | | |
| S-26 | 4600-½ 446 (500-½) | 446 (500-½) | 4600-7/8 446 (500-7/8) | 446 (500-7/8) |
| C CIRCLING | 4700-1 546 (600-1) | 4780-1 626 (700-1) | 5100-2¾ 946 (1000-2¾) | 5100-3 946 (1000-3) |

REIL Rwy 8 **0**
HIRL Rwy 8-26 **0**

NW-1, 08 AUG 2024 to 05 SEP 2024

NW-1, 08 AUG 2024 to 05 SEP 2024