

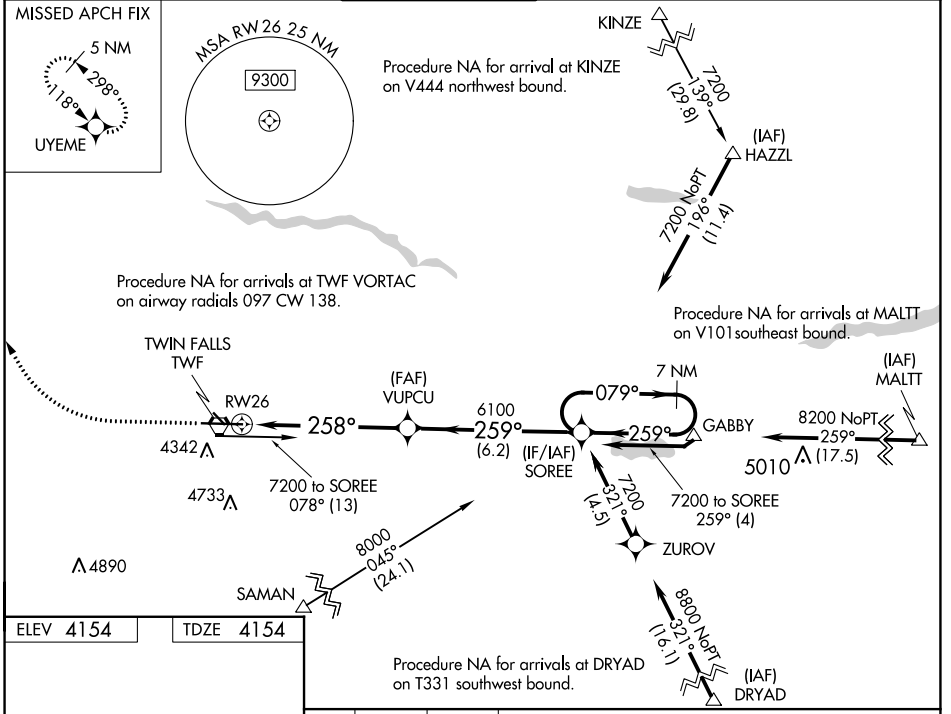
WAAS CH <b>56311</b> <b>W26A</b>	APP CRS <b>258°</b>	Rwy Idg <b>8704</b> TDZE <b>4154</b> Apt Elev <b>4154</b>
--	------------------------	---

# RNAV (GPS) RWY 26

JOSLIN FLD/MAGIC VALLEY RGNL (TWF)

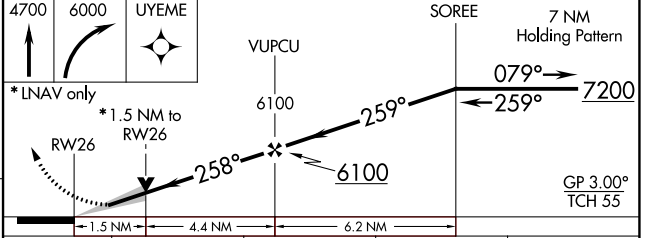
<p><b>⚠</b> Circling to Rwy 30 NA at night.  <b>⚠</b> For uncompensated Baro-VNAV systems, LNAV/VNAV NA below -16°C (4°F) or above 49°C (121°F).                  DME/DME RNP-0.3 NA.</p>	<p>MALSR  </p>	<p>MISSED APPROACH: Climb to 4700 then climbing right turn to 6000 direct UYEME and hold.</p>
---	--------------------	---

ASOS <b>135.025</b>	TWIN FALLS APP CON * <b>126.7 353.75</b>	TWIN FALLS TOWER * <b>118.2 (CTAF) 0 317.5</b>	GND CON <b>121.7</b>	CLNC DEL <b>123.65</b>	UNICOM <b>122.95</b>
------------------------	---	---	-------------------------	---------------------------	-------------------------



ELEV 4154	TDZE 4154
-----------	-----------

REIL Rwy 8 **0**  
 HIRL Rwy 8-26 **0**



CATEGORY	A	B	C	D
LPV DA		4354-1/2	200 (200-1/2)	
LNAV/VNAV DA		4533-3/4	379 (400-3/4)	
LNAV MDA	4680-1/2	526 (600-1/2)	4680-1	526 (600-1)
<b>C</b> CIRCLING	4700-1 546 (600-1)	4780-1 626 (700-1)	5160-3	1006 (1100-3)

NW-1, 08 AUG 2024 to 05 SEP 2024

NW-1, 08 AUG 2024 to 05 SEP 2024