

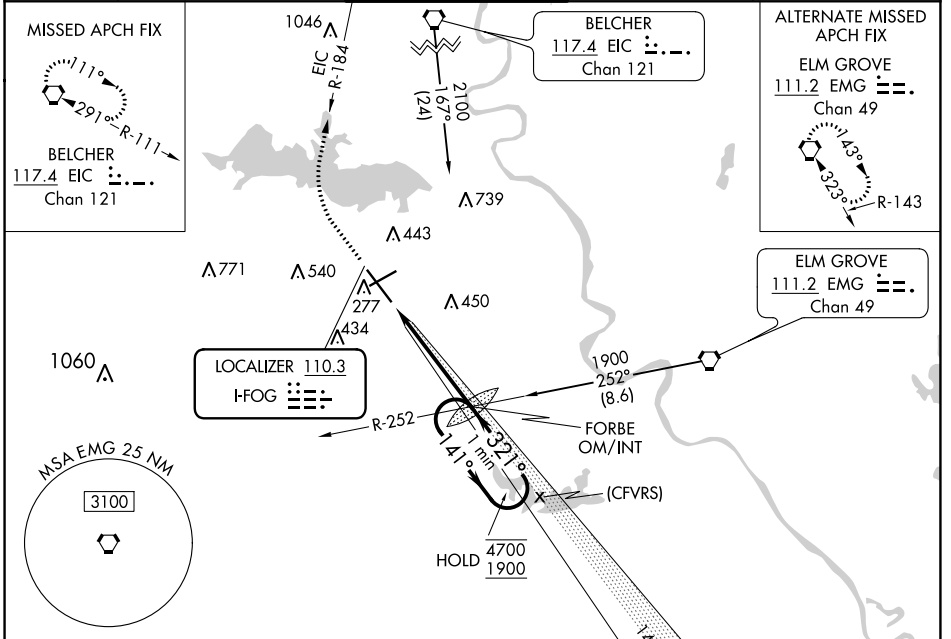
LOC I-FOG 110.3	APP CRS 321°	Rwy Idg TDZE Apt Elev	7975 222 258
---------------------------	------------------------	-----------------------------	---

ILS or LOC RWY 32

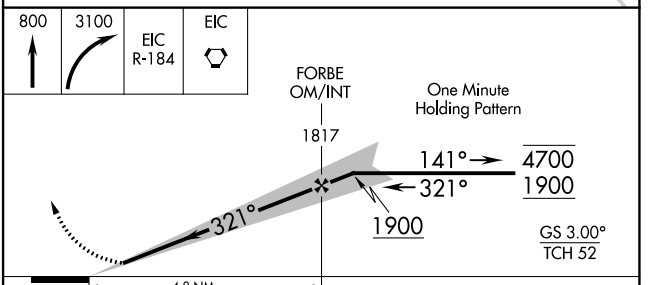
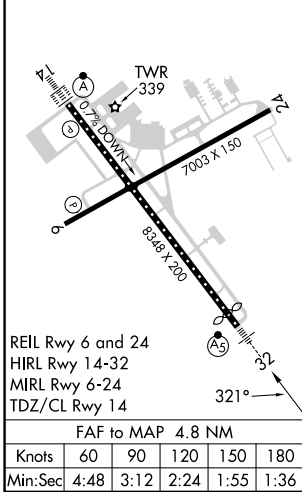
SHREVEPORT RGNL (SHV)

<p>Rwy 32 helicopter visibility reduction below RVR 4000 NA. Inop table does not apply to S-ILS 32 all Cats. For inop ALS, increase S-LOC 32 Cat A and B visibility to RVR 5500 and Cat C and D visibility to 1$\frac{1}{2}$ SM.</p>	<p>MALSR</p>	<p>MISSED APPROACH: Climb to 800 then climbing right turn to 3100 on EIC VORTAC R-184 to EIC VORTAC and hold.</p>

ATIS 128.45	SHREVEPORT APP CON 119.9 335.55	SHREVEPORT TOWER 121.4 236.775	GND CON 121.175 236.775	CLNC DEL 124.65
-----------------------	---	--	-----------------------------------	---------------------------



ELEV 258	D	TDZE 222
----------	----------	----------



CATEGORY	A	B	C	D
S-ILS 32	422/40 200 (200- $\frac{3}{4}$)			
S-LOC 32	720/40	498 (500- $\frac{3}{4}$)	720/50	498 (500-1)
C CIRCLING	760-1	502 (600-1)	980-2 722 (800-2)	1100-2 $\frac{3}{4}$ 842 (900-2 $\frac{3}{4}$)

SC-4, 18 MAY 2023 to 15 JUN 2023

SC-4, 18 MAY 2023 to 15 JUN 2023