

WAAS CH 90330 W13A	APP CRS 127°	Rwy Idg 5200 TDZE 1196 Apt Elev 1201
--	------------------------	---

RNAV (GPS) RWY 13

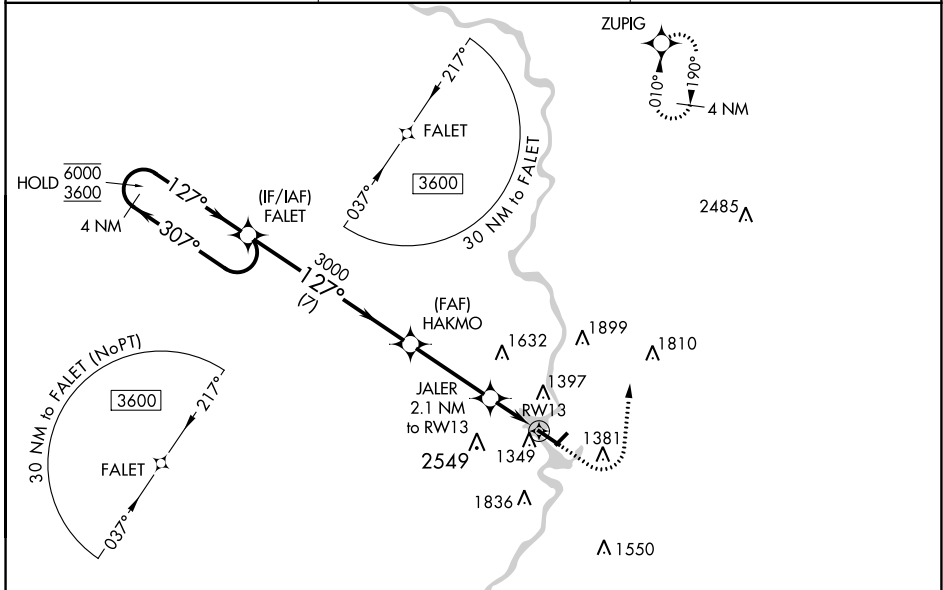
WAUSAU DOWNTOWN (A U W)

RNP APCH.

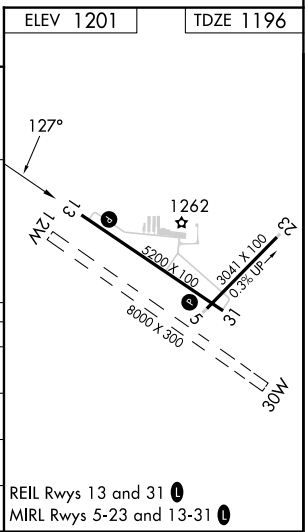
▼ Circling NA to Rwsy 12W and 30W.
▲ Circling NA southwest of Rwy 13-31.
 For uncompensated Baro-VNAV systems, LNAV/VNAV NA below -17°C or above 54°C.

MISSED APPROACH: Climb to 1800 then climbing left turn to 4000 direct ZUPIG and hold.

ASOS 125.925	MINNEAPOLIS CENTER 124.4 317.7	UNICOM 122.7 (CTAF) 0
------------------------	--	---------------------------------



4 NM Holding Pattern		FALET	HAKMO	JALER	RW13	ZUPIG
6000 ← 307°		3600 → 127°	3000	2549	1381	1262
GP 3.00°		3000	1900	1800	4000	1201
TCH 43		7 NM	3.4 NM	1 NM	1.1 NM	
CATEGORY	A	B	C	D		
LPV DA	1446-3/4		250 (300-3/4)			
LNAV/VNAV DA	1534-1 1/8		338 (400-1 1/8)			
LNAV MDA	1600-1	404 (400-1)	1600-1 1/8	404 (400-1 1/8)		
C CIRCLING	1840-1	639 (700-1)	1960-2 1/4	2260-3	REIL Rwsy 13 and 31 0 MRL Rwsy 5-23 and 13-31 0	
			759 (800-2 1/4)	1059 (1100-3)		



EC-3, 18 MAY 2023 to 15 JUN 2023

EC-3, 18 MAY 2023 to 15 JUN 2023