

WAAS CH 63015 W06A	APP CRS 062°	Rwy Idg TDZE Apt Elev	7699 692 695
--	------------------------	-----------------------------	---

RNAV (GPS) RWY 6

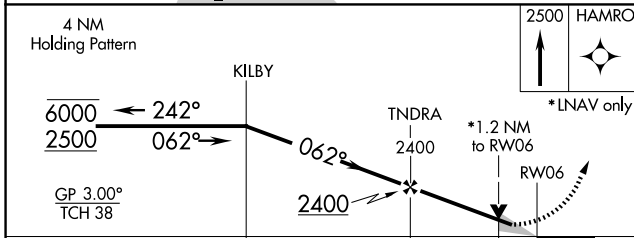
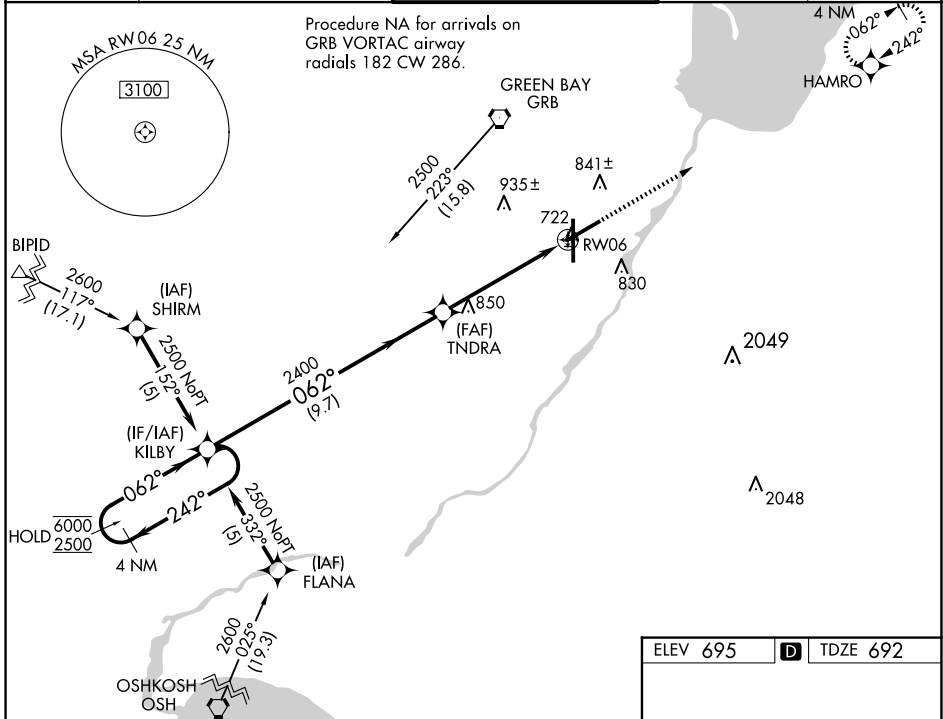
GREEN BAY/AUSTIN STRAUBEL INTL (GRB)

RNP APCH.

▼ For uncompensated Baro-VNAV systems, LNAV/VNAV NA below -16°C or above 54°C.
 For inop ALS, increase LNAV/VNAV all Cats visibility to RVR 4500, and LNAV Cats C and D visibility to RVR 6000. **RVR 1800 authorized with use of FD or AP or HUD to DA

MALSR 	MISSED APPROACH: Climb to 2500 direct HAMRO and hold.
------------------	---

ATIS 124.1	GREEN BAY APP CON* 119.4 338.2	GREEN BAY TOWER * 118.7 (CTAF) 257.8	GND CON 121.9	CLNC DEL 121.75
-----------------------------	---	---	--------------------------------	----------------------------------



ELEV 695	D TDZE 692
----------	-------------------

8 L

TWR 796

7700 X 150

8700 X 150

36

062°

HIRL Rwy 6-24 and 18-36
REIL Rwy 18

CATEGORY	A	B	C	D
LPV DA**	892/24		200 (200-½)	
LNAV/VNAV DA	1000/24 308 (400-½)		1000/40 308 (400-¾)	
LNAV MDA	1100/24 408 (500-½)		1100/40 408 (500-¾)	
CIRCLING	1200-1 505 (600-1)		1300-1¾ 605 (700-1½)	

EC-3, 23 JAN 2025 to 20 FEB 2025

EC-3, 23 JAN 2025 to 20 FEB 2025