

LOC/DME I-GRB <b>109.5</b> Chan <b>32</b>	APP CRS <b>242°</b>	Rwy Idg TDZE Apt Elev	<b>7699</b> <b>682</b> <b>695</b>
---	------------------------	-----------------------------	---

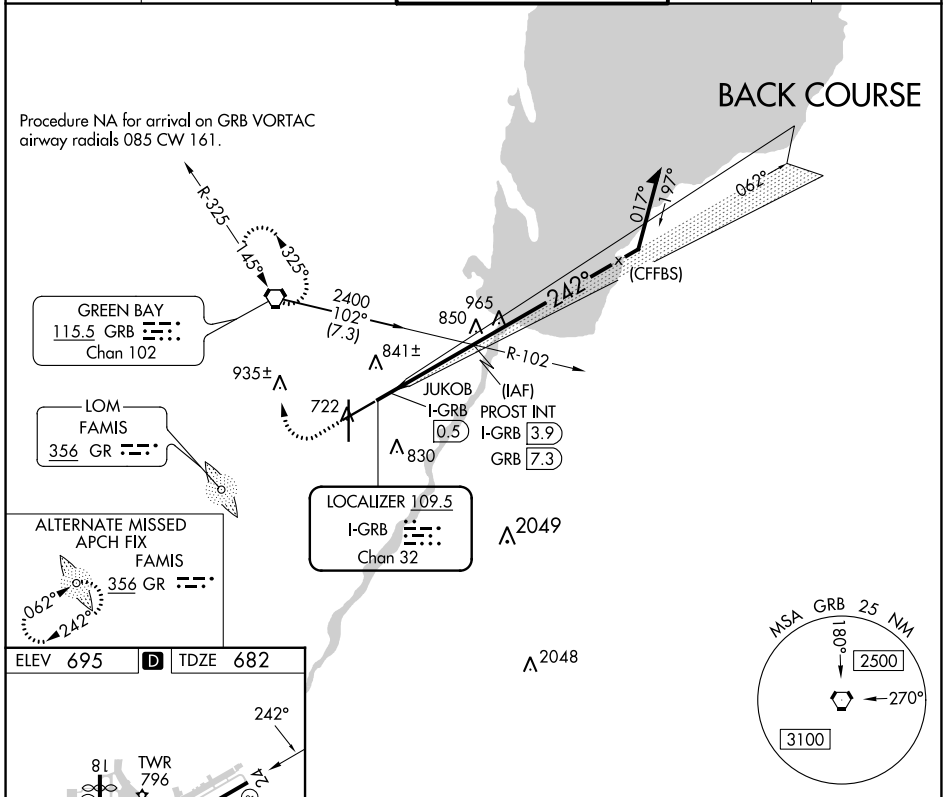
# LOC BC RWY 24

GREEN BAY/AUSTIN STRAUBEL INTL (GRB)

**ASR**

MISSED APPROACH: Climb to 1500 then climbing right turn to 2500 direct GRB VORTAC and hold.

ATIS <b>124.1</b>	GREEN BAY APP CON* <b>119.4 338.2</b>	GREEN BAY TOWER* <b>118.7 (CTAF) 257.8</b>	GND CON <b>121.9</b>	CLNC DEL <b>121.75</b>
----------------------	--	---	-------------------------	---------------------------



ELEV 695 TDZE 682

81 TWR 796  
7700 X 150  
36  
8700 X 150  
REIL Rwy 18  
HIRL Rwy 6-24 and 18-36  
FAF to MAP 3.4 NM

Knots	60	90	120	150	180
Min:Sec	3:24	2:16	1:42	1:21	1:08

1500	2500	GRB	PROST INT I-GRB 3.9	Remain within 10 NM
------	------	-----	---------------------	---------------------

Disregard GS indications.

JUKOB I-GRB 0.5

2100

3.14° TCH 50

Use I-GRB DME when on the localizer course.

062° 2400 242°

0.7 3.4 NM

CATEGORY	A	B	C	D
S-24	1100-1 418 (500-1)		1100-1½ 418 (500-1½)	
<b>CIRCLING</b>	1200-1 505 (600-1)		1300-1¾ 605 (700-1¾)	1300-2 605 (700-2)

EC-3, 03 OCT 2024 to 31 OCT 2024

EC-3, 03 OCT 2024 to 31 OCT 2024