
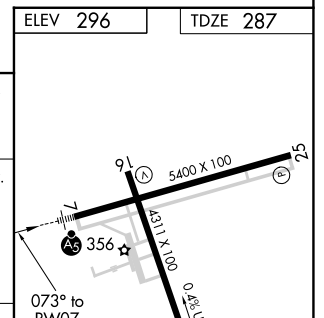
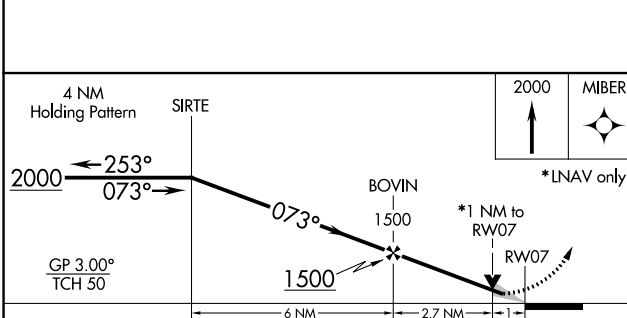
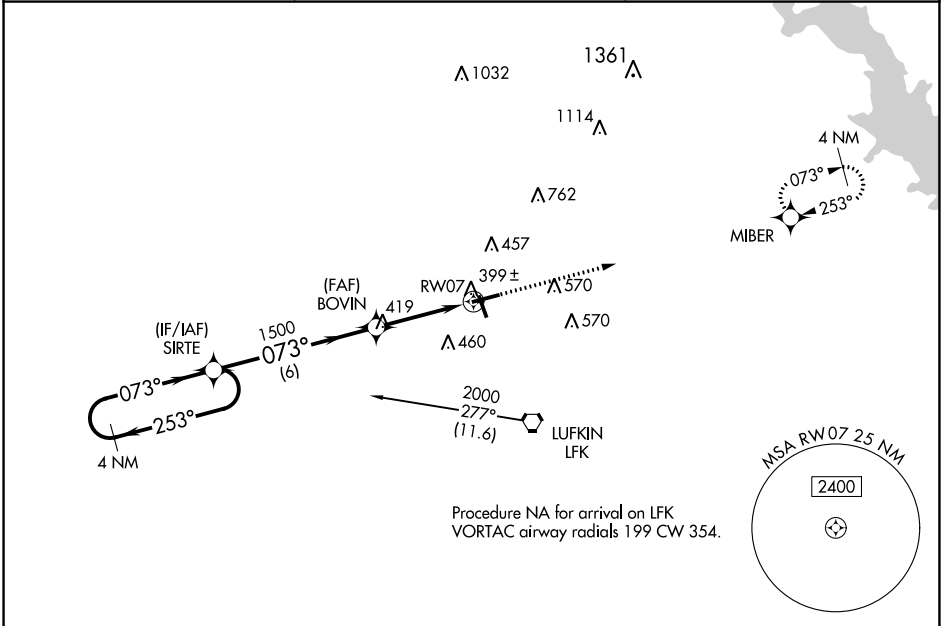


WAAS CH <b>50105</b> <b>W07A</b>	APP CRS <b>073°</b>	Rwy Idg TDZE Apt Elev	<b>5400</b> <b>287</b> <b>296</b>
--	------------------------	-----------------------------	---

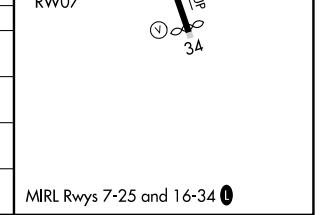
# RNAV (GPS) RWY 7

ANGELINA COUNTY (L.F.K)

<p><b>▼</b> For uncompensated Baro-VNAV systems, LNAV/VNAV NA below -4°C (25°F) or above 54°C (130°F). DME/DME RNP-0.3 NA. Circling Rwy 16, 25 NA at night.</p>	<p>MALSR</p> 	<p>MISSED APPROACH: Climb to 2000 direct MIBER and hold.</p>
<p>ASOS <b>120.625</b></p>	<p>HOUSTON CENTER <b>125.175 285.575</b></p>	<p>UNICOM <b>123.0 (CTAF) 0</b></p>



CATEGORY	A	B	C	D
LPV DA		537-½	250 (300-½)	
LNAV/VNAV DA		563-½	276 (300-½)	
LNAV MDA	660-½	373 (400-½)	660-⅝	373 (400-⅝)
<b>C</b> CIRCLING	740-1 444 (500-1)	760-1 464 (500-1)	880-1½ 584 (600-1½)	1140-2¾ 844 (900-2¾)



SC-5, 03 OCT 2024 to 31 OCT 2024

SC-5, 03 OCT 2024 to 31 OCT 2024