

WAAS CH <b>63136</b> <b>W30A</b>	APP CRS <b>307°</b>	Rwy Idg TDZE Apt Elev	<b>7500</b> <b>4444</b> <b>4457</b>
--	------------------------	-----------------------------	---

# RNAV (GPS) RWY 30

LAS CRUCES INTL (LRU)

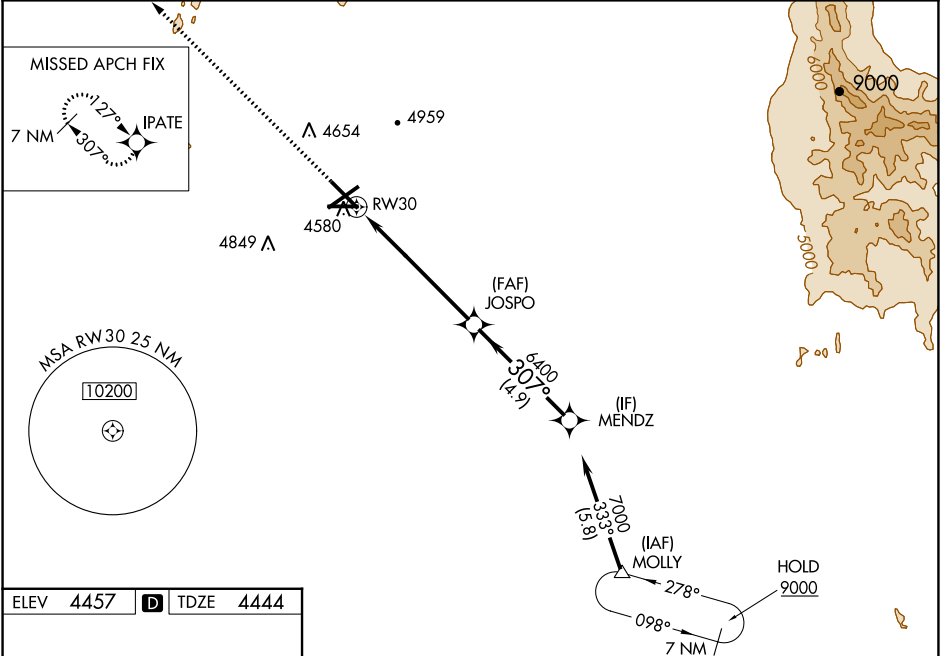
**⚠** For uncompensated Baro-VNAV systems, LNAV/VNAV NA below -12°C (11°F) or above 51°C (124°F). DME/DME RNP-0.3 NA. Baro-VNAV and VDP NA when using Deming altimeter setting. When local altimeter setting not received, use Deming altimeter setting; increase LPV DA to 4758 feet, LNAV/VNAV DA to 4863 feet and all visibilities 3/8 mile; increase all MDA 120 feet and visibility Cat C and D 1/2 mile.

MALSR

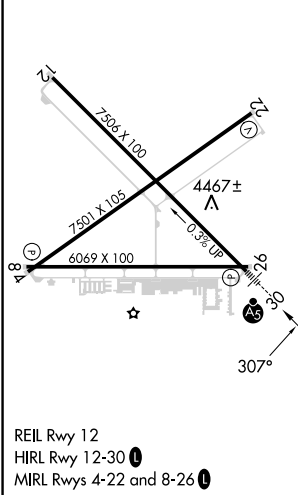


**MISSED APPROACH:** Climb to 9000 direct IPATE and hold, continue climb-in-hold to 9000.

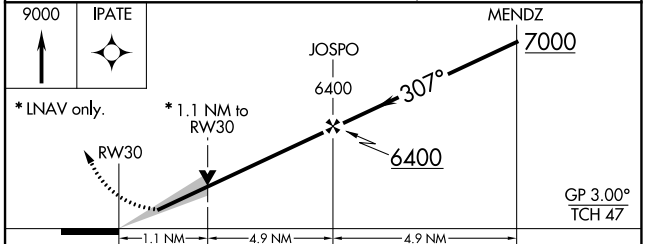
AWOS-3 <b>119.025</b>	ALBUQUERQUE CENTER <b>128.2 285.5</b>	UNICOM <b>122.7 (CTAF)</b>
--------------------------	--	-------------------------------



ELEV <b>4457</b>	<b>D</b>	TDZE <b>4444</b>
------------------	----------	------------------



REIL Rwy 12  
HIRL Rwy 12-30  
MIRL Rwy 4-22 and 8-26



CATEGORY	A	B	C	D
LPV DA		4644-1/2	200 (200-1/2)	
LNAV/VNAV DA		4749-5/8	305 (300-5/8)	
LNAV MDA	4840-1/2	396 (400-1/2)	4840-5/8	396 (400-5/8)
<b>C</b> CIRCLING	4900-1 443 (500-1)	5040-1 583 (600-1)	5320-2 1/2 863 (900-2 1/2)	5320-2 3/4 863 (900-2 3/4)

SW-1, 03 OCT 2024 to 31 OCT 2024

SW-1, 03 OCT 2024 to 31 OCT 2024