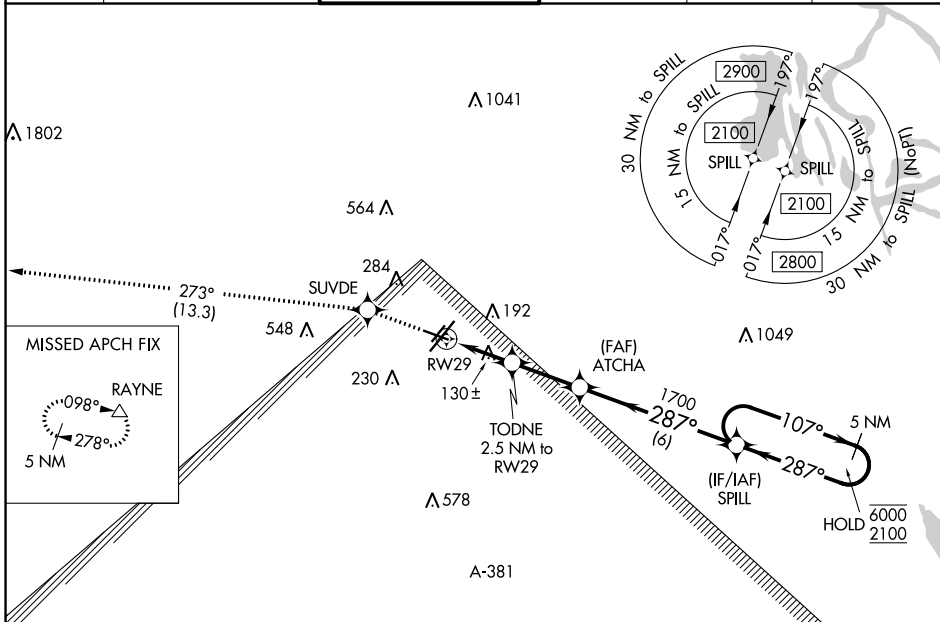


WAAS CH <b>45703</b> <b>W29A</b>	APP CRS <b>287°</b>	Rwy ldg <b>5150</b> TDZE <b>42</b> Apt Elev <b>42</b>
--	------------------------	---

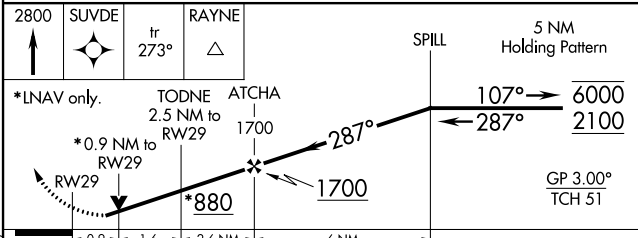
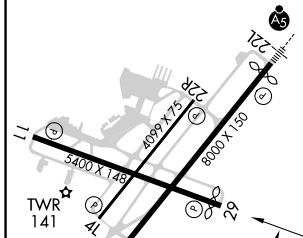
# RNAV (GPS) RWY 29

LAFAYETTE RGNL/PAUL FOURNET FLD (L.F'T')

RNP APCH.			MISSED APPROACH: Climb to 2800 direct SUVDE and on track 273° to RAYNE and hold.		
Rwy 29 helicopter visibility reduction below $\frac{3}{4}$ SM NA. For uncompensated Baro-VNAV systems, LNAV/VNAV NA below -2°C or above 54°C.					
ATIS <b>134.05</b>	LAFAYETTE APP CON ★ <b>121.1 363.0</b>	LAFAYETTE TOWER ★ <b>118.5 (CTAF) 0 257.8</b>	GND CON <b>121.8</b>	CLNC DEL <b>125.55</b>	UNICOM <b>122.95</b>



ELEV 42	<b>D</b>	TDZE 42
---------	----------	---------



CATEGORY	A	B	C	D
LPV DA		292- $\frac{3}{4}$	250 (300- $\frac{3}{4}$ )	
LNAV/VNAV DA		292- $\frac{3}{4}$	250 (300- $\frac{3}{4}$ )	
LNAV MDA		380-1	338 (400-1)	
<b>C</b> CIRCLING	500-1 458 (500-1)	580-1 538 (600-1)	700-1 $\frac{3}{4}$ 658 (700-1 $\frac{3}{4}$ )	700-2 658 (700-2)

REIL Rws 4L, 4R, 11, 22R and 29  
MIRL Rwy 11-29 and 4L-22R  
HIRL Rwy 4R-22L