

LOC/DME I-FRT 109.5 Chan 32	APP CRS 216°	Rwy Idg 7659 TDZE 38 Apt Elev 42
---	------------------------	---

ILS or LOC RWY 22L

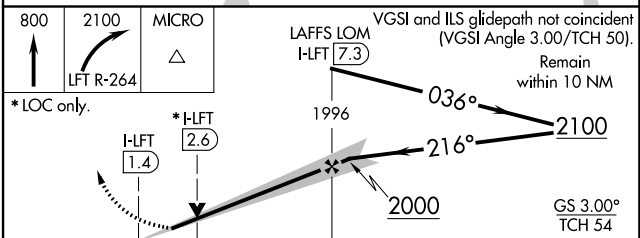
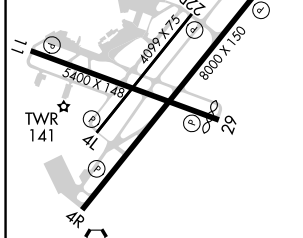
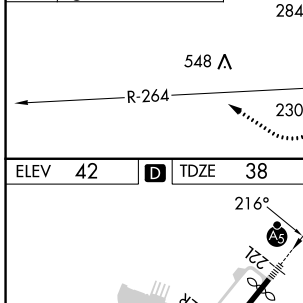
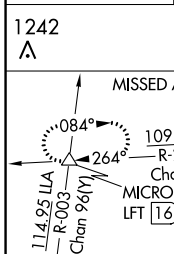
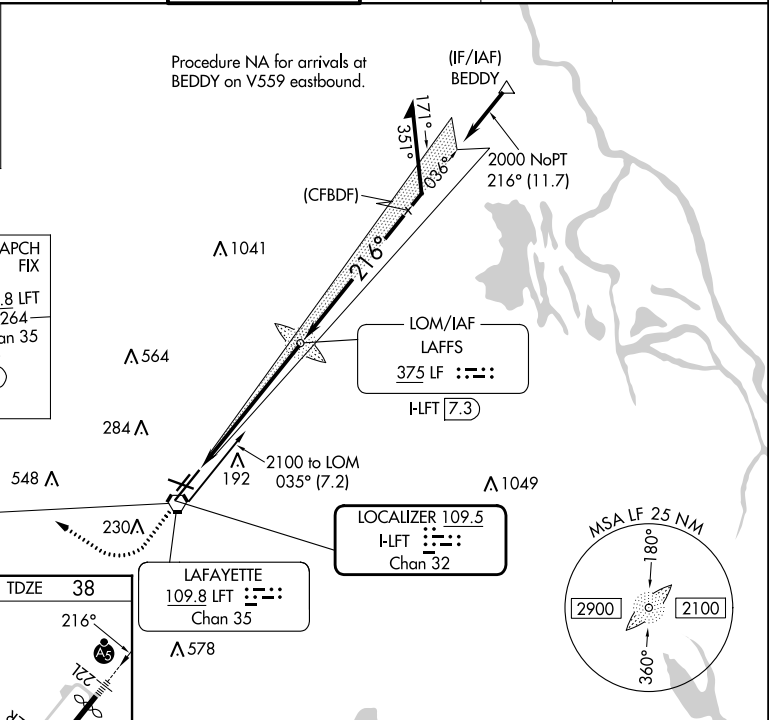
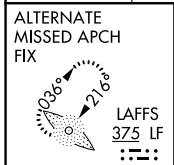
LAFAYETTE RGNL/PAUL FOURNET FLD (L.F.T)

⚠ VDP NA with Acadiana Rgnl altimeter setting. When local altimeter setting not received, use Acadiana Rgnl altimeter setting and increase DA to 267 feet; increase all MDA 40 feet and S-LOC 22L visibility Cat C/D to RVR 5000 and Circling visibility Cat C/D ¼ SM. For inop MALSR when using Acadiana Rgnl altimeter setting, increase S-LOC 22L Cat C and D visibility to 1 ½ mile.
****RVR 1800 authorized with use of FD or AP or HUD to DA (NA when using Acadiana Rgnl altimeter setting).**

MALS

MISSED APPROACH:
 Climb to 800 then climbing right turn to 2100 on LFT VORTAC R-264 to MICRO INT/ LFT 16 DME and hold.

ATIS 134.05	LAFAYETTE APP CON * 121.1 363.0	LAFAYETTE TOWER * 118.5 (CTAF) 0 257.8	GND CON 121.8	CLNC DEL 125.55	UNICOM 122.95
-----------------------	---	--	-------------------------	---------------------------	-------------------------



CATEGORY	A	B	C	D
S-ILS 22L**	480/24	238/24	200 (200-½)	442 (500-¾)
S-LOC 22L	480/24	442 (500-½)	480/45	442 (500-¾)
C CIRCLING	540-1 498 (500-1)	580-1 538 (600-1)	700-1¾ 658 (700-1¾)	700-2 658 (700-2)

SC-4, 03 OCT 2024 to 31 OCT 2024

SC-4, 03 OCT 2024 to 31 OCT 2024