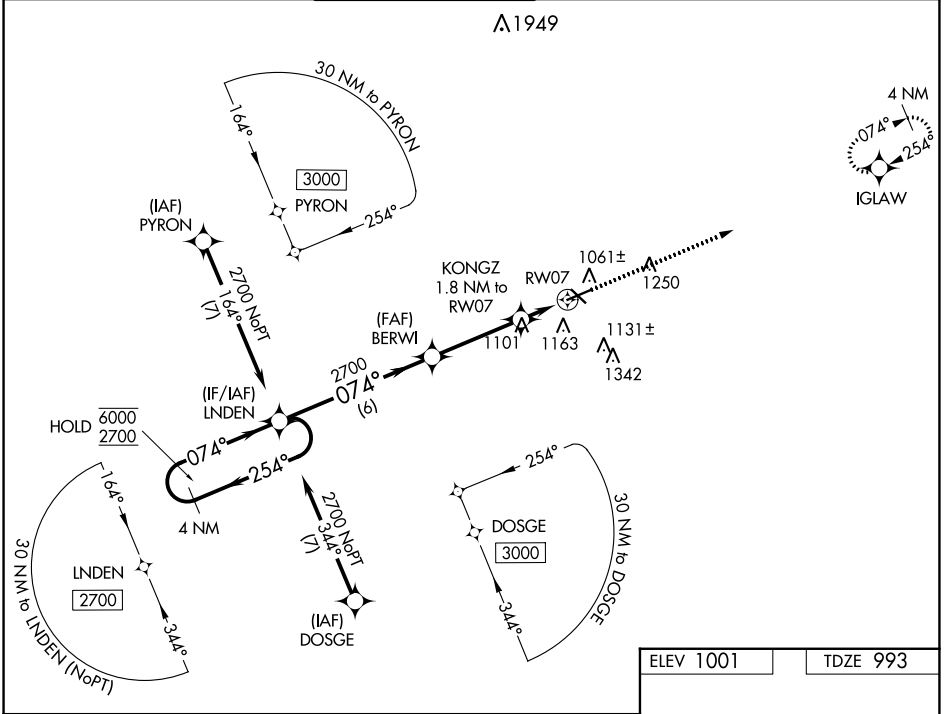


WAAS CH 62841 W07A	APP CRS 074°	Rwy Idg TDZE Apt Elev	5351 993 1001
--	------------------------	-----------------------------	--

RNAV (GPS) RWY 7
JACKSON COUNTY/REYNOLDS FLD (JXN)

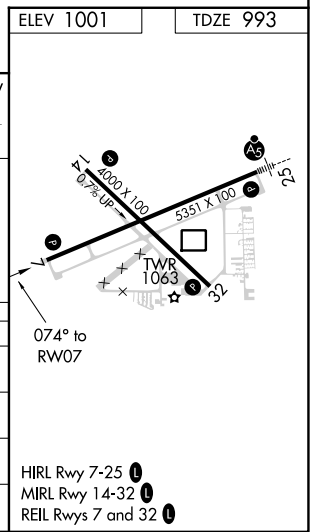
RNP APCH.		MISSED APPROACH: Climb to 3000 direct IGLAW and hold.		
▼ For uncompensated Baro-VNAV systems, LNAV/ VNAV NA below -23°C or above 54°C.				
ATIS 125.725	GREAT LAKES APP CON * 127.3 335.575	JACKSON TOWER * 128.475 (CTAF) 257.8	GND CON 121.9	CLNC DEL 121.9
			UNICOM 122.95	



EC-1, 03 OCT 2024 to 31 OCT 2024

EC-1, 03 OCT 2024 to 31 OCT 2024

4 NM Holding Pattern		LNDEN		BERWI		KONGZ 1.8 NM to RW07		RW07	
6000 2700		← 254°		← 074°		← 074°		← 074°	
GP 3.00°		TCH 37		2700		*1600		*1.2 NM to RW07	
		← 6 NM		← 3.5 NM		← 0.6 NM		← 1.2 NM	
CATEGORY	A	B	C	D					
LPV DA		1258-7/8	265 (300-7/8)						
LNAV/VNAV DA		1292-7/8	299 (300-7/8)						
LNAV MDA	1400-1	407 (400-1)	1400-1 1/8	407 (400-1 1/8)					
CIRCLING	1480-1	479 (500-1)	1660-1 3/4	659 (700-1 3/4)	1660-2	659 (700-2)			



HIRL Rwy 7-25
MIRL Rwy 14-32
REIL Rwys 7 and 32