

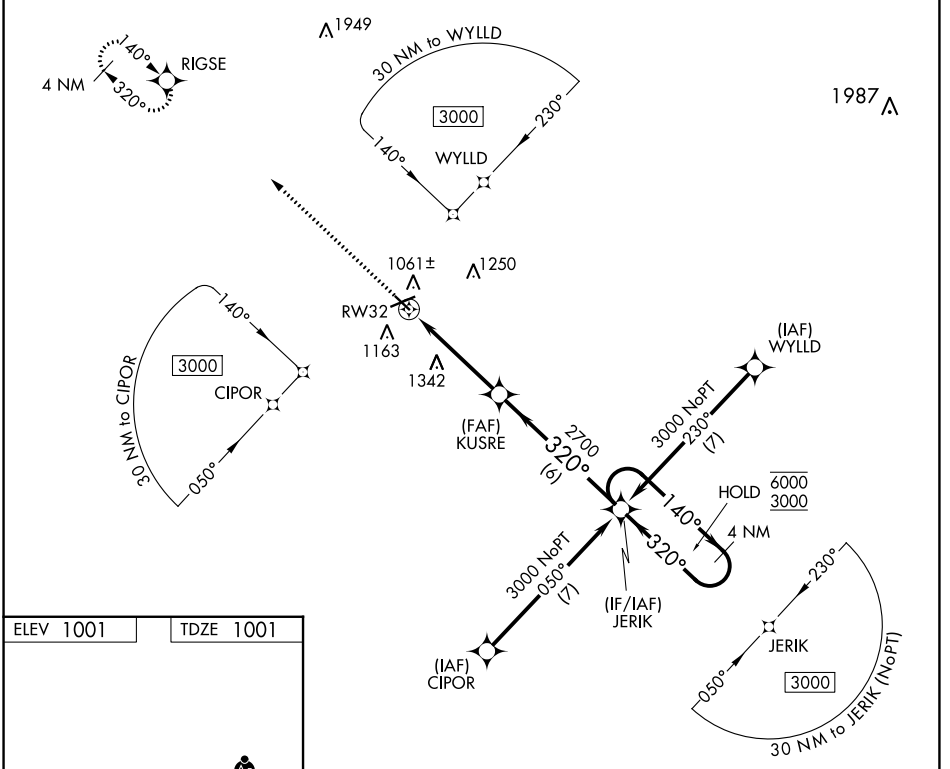
APP CRS	Rwy Idg	<b>4000</b>
<b>320°</b>	TDZE	<b>1001</b>
	Apt Elev	<b>1001</b>

# RNAV (GPS) RWY 32

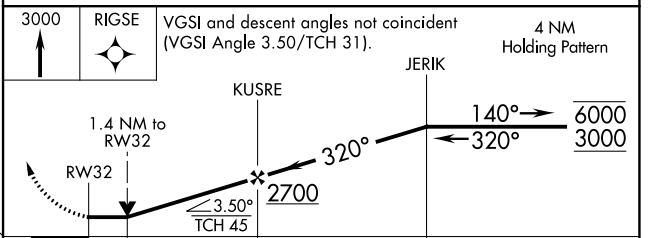
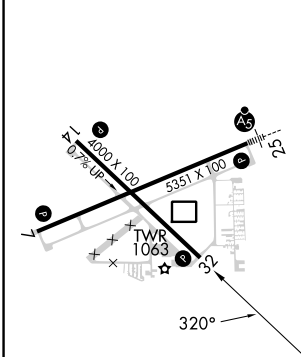
JACKSON COUNTY/REYNOLDS FLD (JXN)

RNP APCH - GPS.		MISSED APPROACH: Climb to 3000 direct RIGSE and hold.			
Rwy 32 helicopter visibility reduction below 3/4 SM NA.					

ATIS <b>125.725</b>	GREAT LAKES APP CON * <b>127.3 335.575</b>	JACKSON TOWER * <b>128.475 (CTAF) 257.8</b>	GND CON <b>121.9</b>	CLNC DEL <b>121.9</b>	UNICOM <b>122.95</b>
------------------------	---	--	-------------------------	--------------------------	-------------------------



ELEV 1001	TDZE 1001
-----------	-----------



CATEGORY	A	B	C	D
LNAV MDA	1560-1	559 (600-1)	1560-1 1/8	559 (600-1 1/8)
CIRCLING	1560-1	559 (600-1)	1660-1 3/4 659 (700-1 3/4)	1660-2 659 (700-2)

HIRL Rwy 7-25   
 MIRL Rwy 14-32   
 REIL Rwy 7 and 32

EC-1, 03 OCT 2024 to 31 OCT 2024

EC-1, 03 OCT 2024 to 31 OCT 2024