

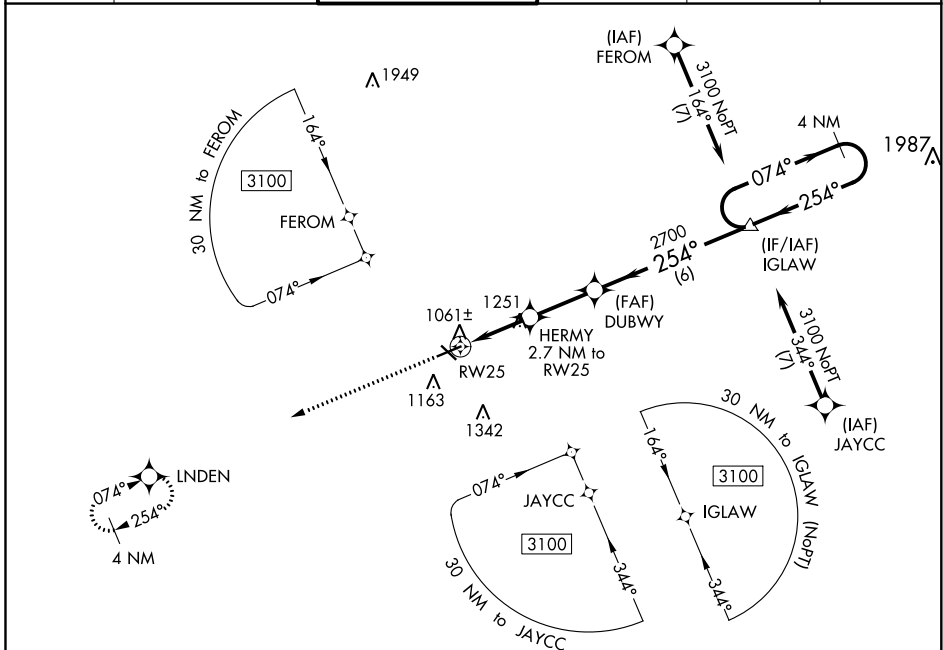
WAAS CH 86341 W25A	APP CRS 254°	Rwy ldg TDZE Apt Elev	5351 995 1001
---------------------------------	------------------------	-----------------------------	--

RNAV (GPS) RWY 25

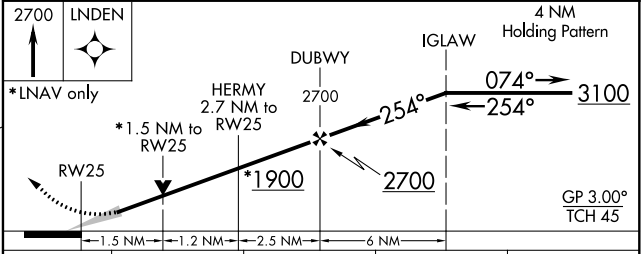
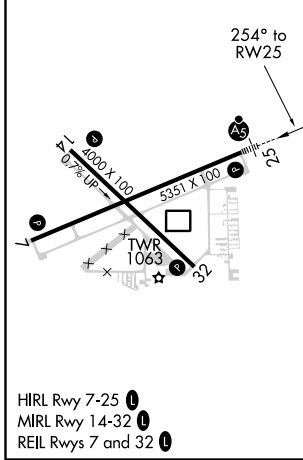
JACKSON COUNTY-REYNOLDS FLD (JXN)

For uncompensated Baro-VNAV systems, LNAV/VNAV NA below -21°C (-5°F) or above 54°C (130°F). DME/DME RNP-0.3 NA. For inop ALS, increase LNAV/VNAV all Cats visibility to ¾ SM.	MALSR 	MISSED APPROACH: Climb to 2700 direct LNDEN and hold.

ATIS 125.725	GREAT LAKES APP CON * 127.3 335.575	JACKSON TOWER * 128.475 (CTAF) 257.8	GND CON 121.9	CLNC DEL 121.9	UNICOM 122.95
------------------------	---	--	-------------------------	--------------------------	-------------------------



ELEV 1001	TDZE 995
-----------	----------



CATEGORY	A	B	C	D
LPV DA		1195-½	200 (200-½)	
LNAV/VNAV DA		1278-½	283 (300-½)	
LNAV MDA	1520-¾	525 (600-¾)	1520-1	525 (600-1)
<input checked="" type="checkbox"/> CIRCLING	1520-1	519 (600-1)	1660-1¾ 659 (700-1¾)	1660-2 659 (700-2)

EC-1, 02 DEC 2021 to 30 DEC 2021

EC-1, 02 DEC 2021 to 30 DEC 2021