

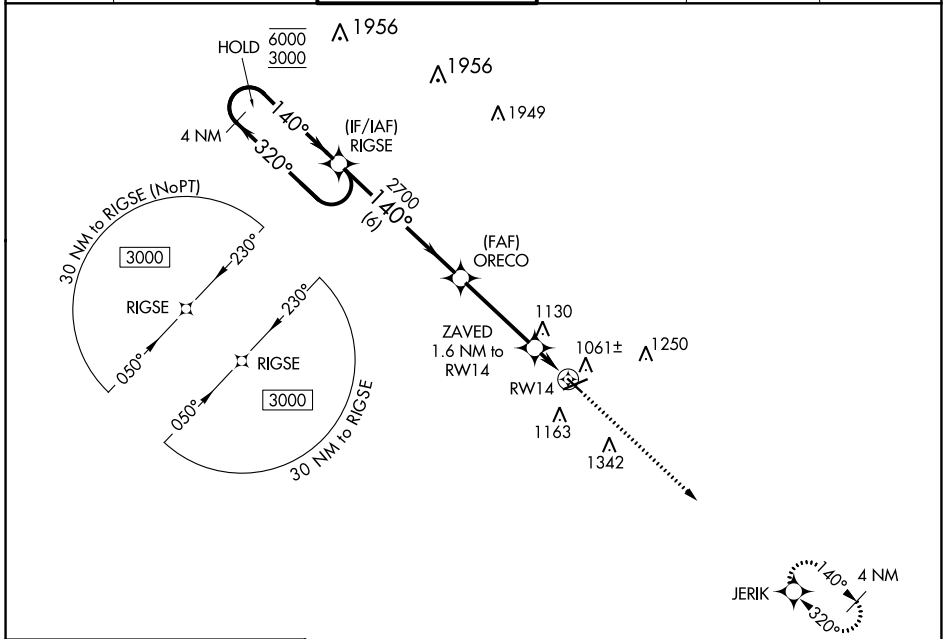
WAAS CH 86527 W14A	APP CRS 140°	Rwy Idg TDZE Apt Elev	4000 996 1001
--	------------------------	-----------------------------	--

RNAV (GPS) RWY 14

JACKSON COUNTY/REYNOLDS FLD (JXN)

RNP APCH - GPS.				MISSED APPROACH: Climb to 3000 direct JERIK and hold.	
<p>▼ Rwy 14 helicopter visibility reduction below 3/4 SM NA. For uncompensated Baro-VNAV systems, LNAV/VNAV NA below -23°C or above 54°C.</p>					

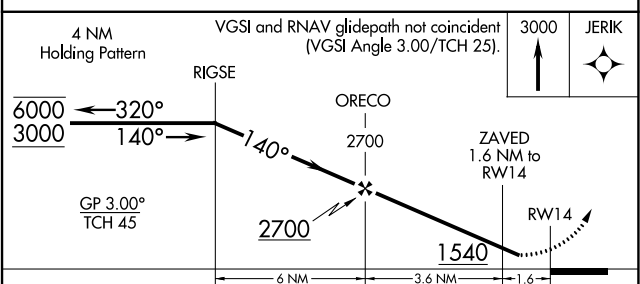
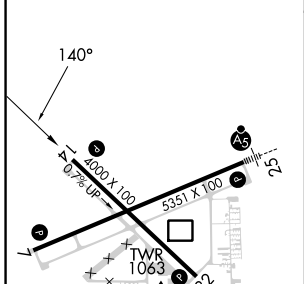
ATIS 125.725	GREAT LAKES APP CON * 127.3 335.575	JACKSON TOWER * 128.475(CTAF) 257.8	GND CON 121.9	CLNC DEL 121.9	UNICOM 122.95
------------------------	---	---	-------------------------	--------------------------	-------------------------



EC-1, 03 OCT 2024 to 31 OCT 2024

EC-1, 03 OCT 2024 to 31 OCT 2024

ELEV 1001	TDZE 996
-----------	----------



CATEGORY	A	B	C	D
LPV DA	1345-1 349 (400-1)			
LNAV/VNAV DA	1463-1 3/8 467 (500-1 3/8)			
LNAV MDA	1380-1 384 (400-1)	1380-1 3/8 384 (400-1 3/8)		
<input checked="" type="checkbox"/> CIRCLING	1480-1 479 (500-1)	1660-1 3/4 659 (700-1 3/4)	1660-2 659 (700-2)	

HIRL Rwy 7-25
MIRL Rwy 14-32
REL Rwy 7 and 32