

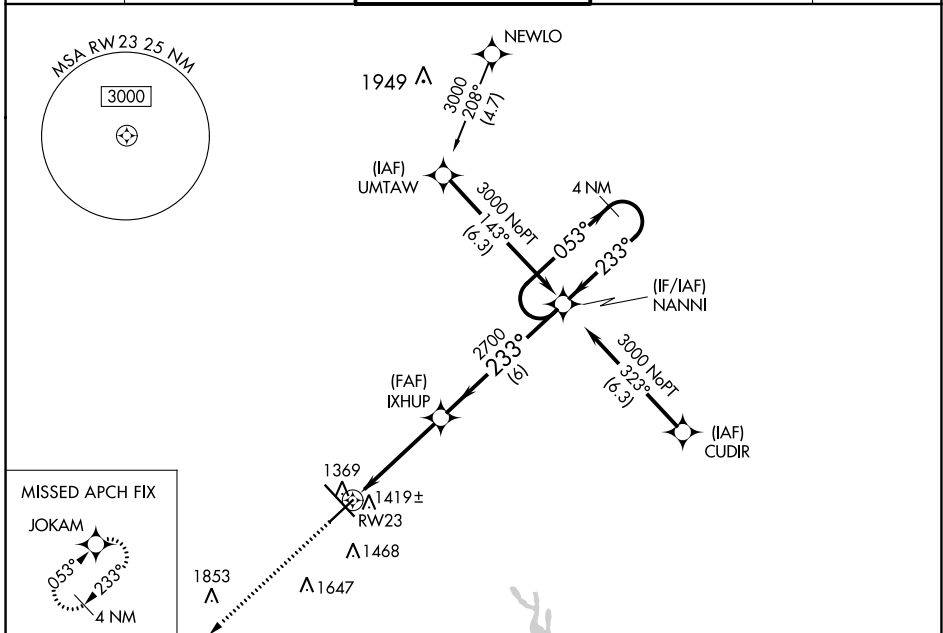
WAAS CH <b>87119</b> <b>W23A</b>	APP CRS <b>233°</b>	Rwy Idg TDZE Apt Elev	<b>6819</b> <b>1295</b> <b>1297</b>
--	------------------------	-----------------------------	---

# RNAV (GPS) RWY 23

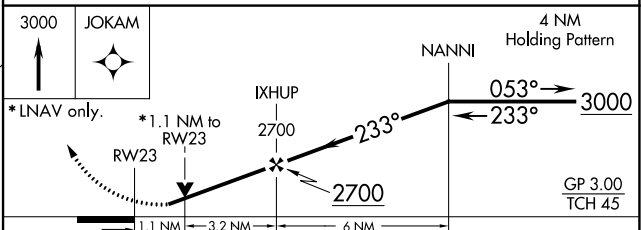
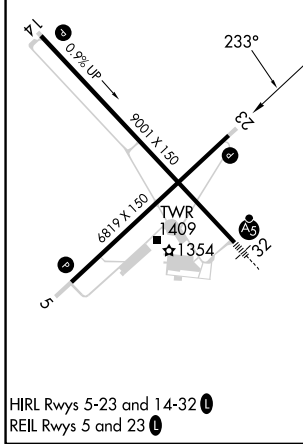
MANSFIELD LAHM RGNL (MFD)

RNP APCH.		MISSED APPROACH: Climb to 3000 direct JOKAM and hold.	
<p><b>⚠</b> For uncompensated Baro-VNAV systems, LNAV/VNAV NA below -20°C (-4°F) or above 54°C (130°F). Rwy 23 helicopter visibility reduction below ¾ SM NA.</p>			

ATIS <b>125.3</b>	CLEVELAND APP CON * <b>128.35 360.65</b>	MANSFIELD TOWER * <b>119.8 (CTAF) 0 291.775</b>	GND CON <b>121.8 291.775</b>	UNICOM <b>122.95</b>
----------------------	---	--	---------------------------------	-------------------------



ELEV 1297	<b>D</b>	TDZE 1295
-----------	----------	-----------



CATEGORY	A	B	C	D
LPV DA		1545-7/8	250 (300-7/8)	
LNAV/VNAV DA		1619-1 1/8	324 (400-1 1/8)	
LNAV MDA	1680-1	385 (400-1)	1680-1 1/8	385 (400-1 1/8)
<b>C</b> CIRCLING	1760-1	463 (500-1)	2000-2 703 (800-2)	2000-2 1/4 703 (800-2 1/4)

EC-2, 08 AUG 2024 to 05 SEP 2024

EC-2, 08 AUG 2024 to 05 SEP 2024