

|  |                        |   |
|--|------------------------|---|
| WAAS<br>CH <b>77712</b><br><b>W18A</b> | APP CRS<br><b>182°</b> | Rwy Idg <b>7150</b><br>TDZE <b>344</b><br>Apt Elev <b>346</b> |
|--|------------------------|---|

# RNAV (GPS) RWY 18

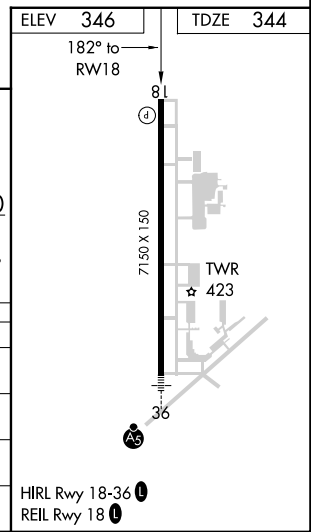
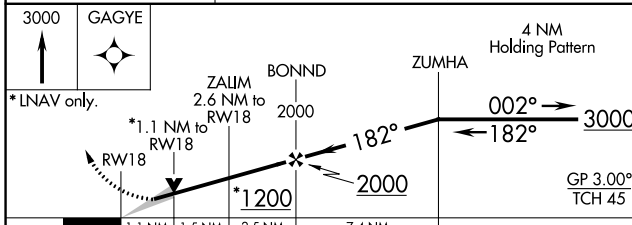
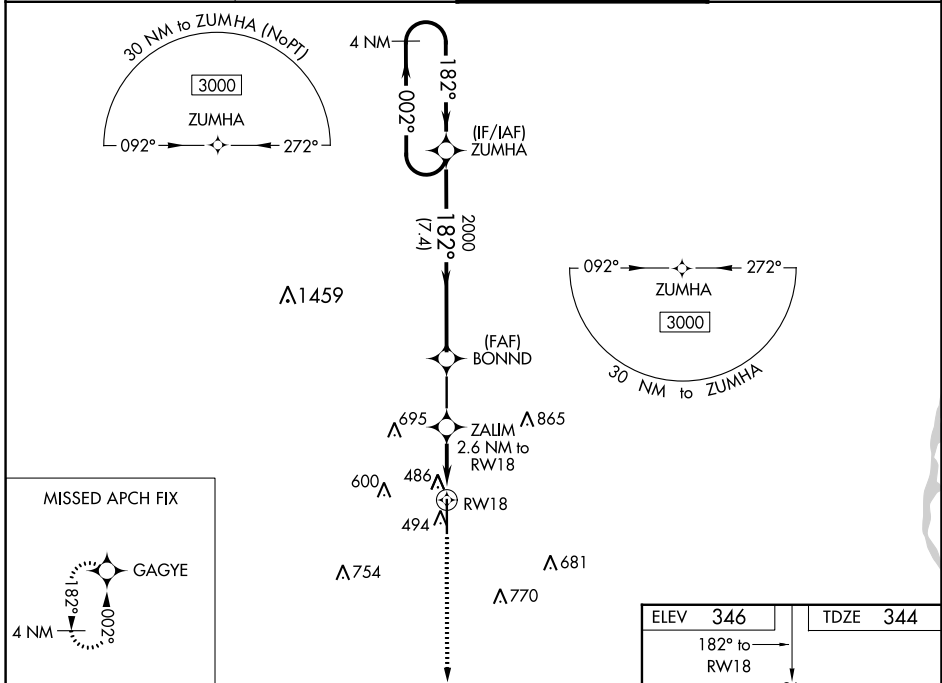
TUPELO RGNL (TUP)

RNP APCH.

**⚠** For uncompensated Baro-VNAV systems, LNAV/VNAV NA below -9°C (16°F) or above 54°C (130°F). When local altimeter not received, use Columbus AFB altimeter setting and increase all DA 112 feet and all MDA 120 feet; increase LPV all Cats visibility ½ mile, LNAV/VNAV all Cats visibility ½ mile and LNAV Cats C and D ½ mile and Circling Cats C and D ½ mile. Baro-VNAV and VDP NA when using Columbus AFB altimeter setting.

MISSED APPROACH:  
Climb to 3000 direct  
GAGYE and hold.

|                        |                                       |   |                                   |
|------------------------|---------------------------------------|---|-----------------------------------|
| ASOS<br><b>133.525</b> | MEMPHIS CENTER<br><b>128.5 279.55</b> | TUPELO TOWER ★<br><b>118.775 (CTAF) 0 254.275</b> | GND CON<br><b>121.825 254.275</b> |
|------------------------|---------------------------------------|---|-----------------------------------|



| CATEGORY          | A                                | B | C   | D |
|-------------------|----------------------------------|---|---|---|
| LPV DA            | 544- <sup>3</sup> / <sub>4</sub> |   | 200 (200- <sup>3</sup> / <sub>4</sub> )   |   |
| LNAV/VNAV DA      | 659-1                            |   | 315 (400-1)   |   |
| LNAV MDA          | 740-1 396 (400-1)                |   | 740-1 <sup>1</sup> / <sub>8</sub> 396 (400-1 <sup>1</sup> / <sub>8</sub> )  |   |
| <b>C</b> CIRCLING | 820-1 474 (500-1)                |   | 900-1 <sup>1</sup> / <sub>2</sub> 1140-2 <sup>1</sup> / <sub>2</sub><br>554 (600-1 <sup>1</sup> / <sub>2</sub> ) 794 (800-2 <sup>1</sup> / <sub>2</sub> ) |   |

SC-4, 08 AUG 2024 to 05 SEP 2024

SC-4, 08 AUG 2024 to 05 SEP 2024