

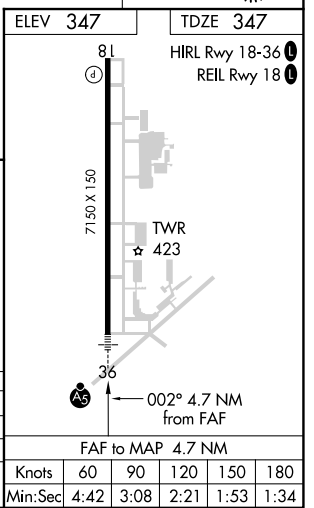
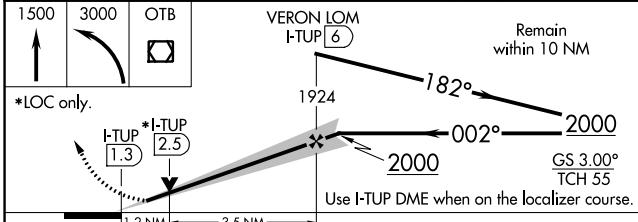
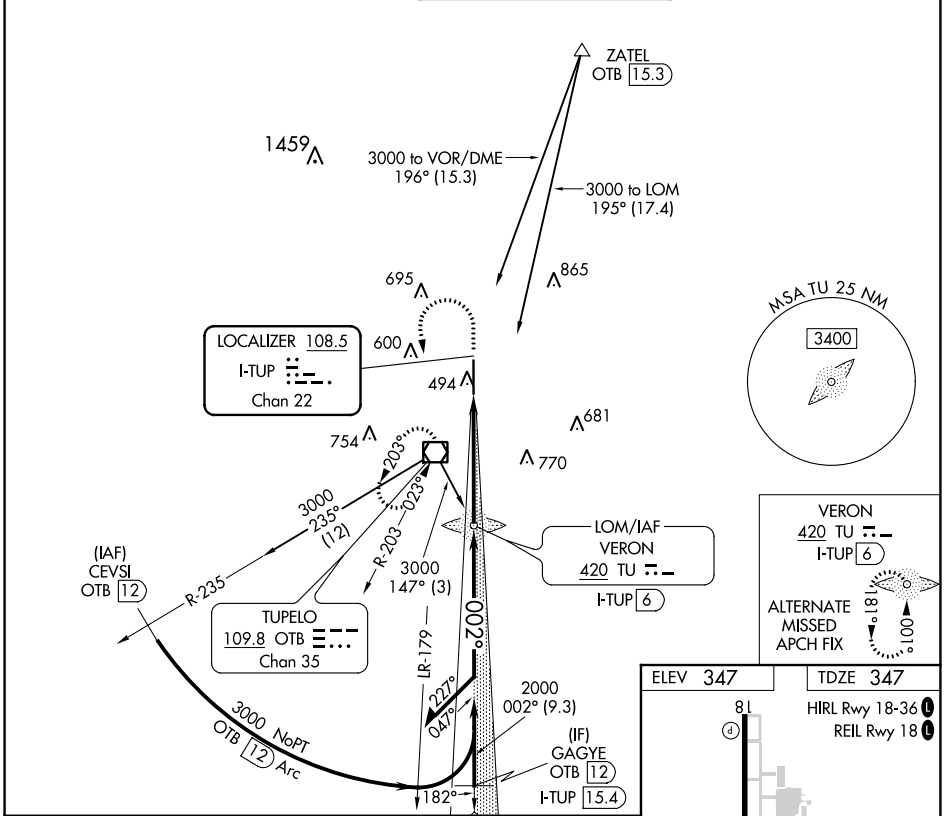
LOC/DME I-TUP <b>108.5</b> Chan 22	APP CRS <b>002°</b>	Rwy Idg TDZE Apt Elev	<b>7150</b> <b>347</b> <b>347</b>
------------------------------------------	------------------------	-----------------------------	-----------------------------------------

# ILS Z or LOC Z RWY 36

TUPELO RGNL (TUP)

ADF or DME required.		MALSR	MISSED APPROACH: Climb to 1500 then climbing left turn to 3000 direct OTB VOR/DME and hold.
Autopilot coupled approach NA below 650.			

ASOS <b>133.525</b>	MEMPHIS CENTER <b>128.5 279.55</b>	TUPELO TOWER* <b>118.775</b> (CTAF) <b>254.275</b>	GND CON <b>121.825 254.275</b>
------------------------	---------------------------------------	-------------------------------------------------------	-----------------------------------



CATEGORY	A	B	C	D	ELEV 347	TDZE 347
S-ILS 36	547-1/2				200 (200-1/2)	HIRL Rwy 18-36 <b>1</b> REIL Rwy 18 <b>1</b>
S-LOC 36	800-1/2	453 (500-1/2)	800-7/8	453 (500-7/8)	TWR 423	
CIRCLING	820-1	473 (500-1)	900-1/2	1140-2/2	36	
			553 (600-1/2)	793 (800-2/2)	002° 4.7 NM from FAF	
					FAF to MAP 4.7 NM	
					Knots 60 90 120 150 180	
					Min:Sec 4:42 3:08 2:21 1:53 1:34	

SC-4, 31 OCT 2024 to 28 NOV 2024

SC-4, 31 OCT 2024 to 28 NOV 2024