


LOC/DME I-TUP 108.5 Chan 22	APP CRS 002°	Rwy Idg TDZE Apt Elev	7150 347 347
---	------------------------	-----------------------------	---

ILS Y or LOC Y RWY 36

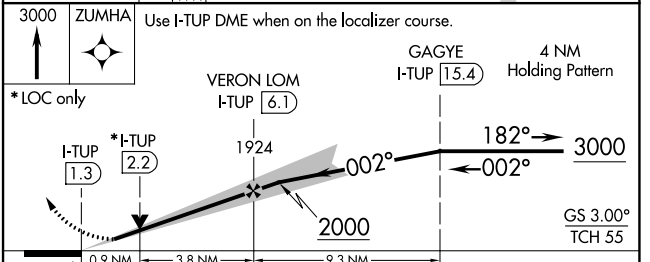
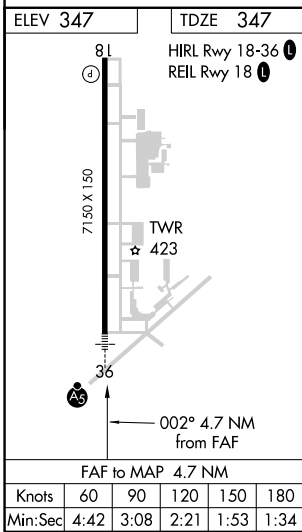
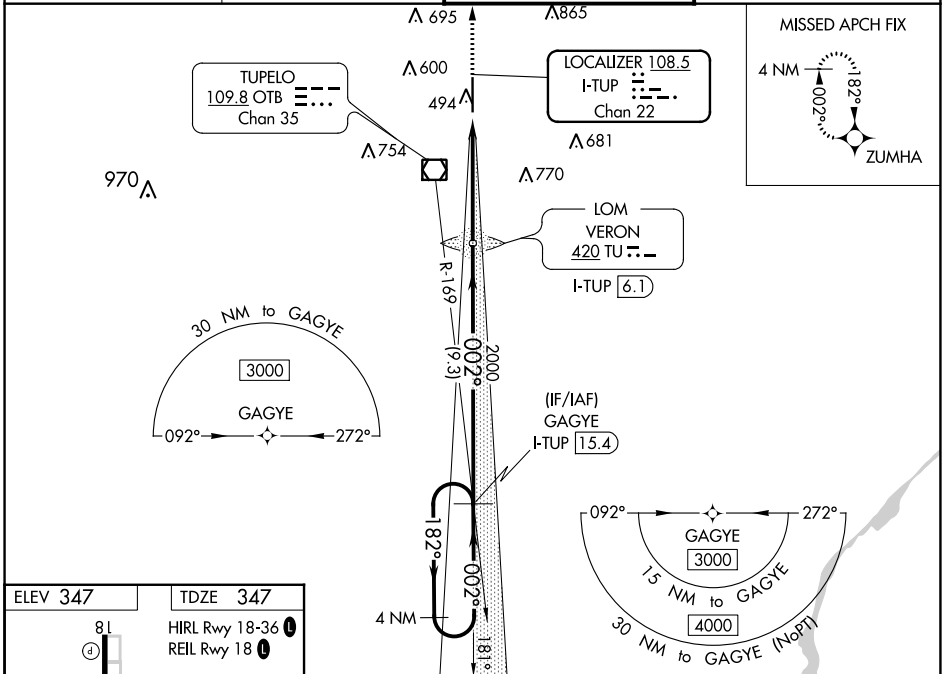
TUPELO RGNL (TUP)

RNAV 1-GPS required.
DME or ADF required for LOC only.

⚠ When local altimeter setting not received, use Columbus AFB altimeter setting and increase all DA 112 feet and all MDA 120 feet; increase S-LOC 36 Cat C and D visibility $\frac{3}{8}$ SM and Circling Cat C and D visibility $\frac{1}{2}$ SM. For inop ALS when using Columbus AFB altimeter setting, increase S-ILS 36 all Cats visibility $\frac{1}{2}$ SM. VDP NA when using Columbus AFB altimeter setting. Autopilot coupled approach NA below 650 feet.

MALSR  **MISSED APPROACH:**
Climb to 3000 direct ZUMHA and hold.

ASOS 133.525	MEMPHIS CENTER 128.5 279.55	TUPELO TOWER ★ 118.775 (CTAF) 0 254.275	GND CON 121.825 254.275
------------------------	---------------------------------------	---	-----------------------------------



CATEGORY	A	B	C	D
S-ILS 36	547- $\frac{1}{2}$		200 (200- $\frac{1}{2}$)	
S-LOC 36	700- $\frac{1}{2}$	353 (400- $\frac{1}{2}$)	700- $\frac{5}{8}$	353 (400- $\frac{5}{8}$)
C CIRCLING	820-1	473 (500-1)	900-1 $\frac{1}{2}$	1140-2 $\frac{1}{2}$
			553 (600-1 $\frac{1}{2}$)	793 (800-2 $\frac{1}{2}$)

SC-4, 03 OCT 2024 to 31 OCT 2024

SC-4, 03 OCT 2024 to 31 OCT 2024