

WAAS CH <b>45616</b> W23A	APP CRS <b>233°</b>	Rwy Idg TDZE Apt Elev	<b>6215</b> <b>931</b> <b>947</b>
---------------------------------	------------------------	-----------------------------	-----------------------------------------

# RNAV (GPS) Y RWY 23

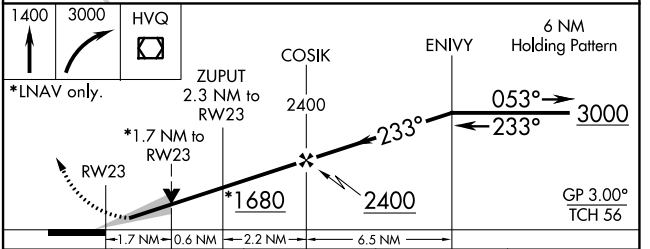
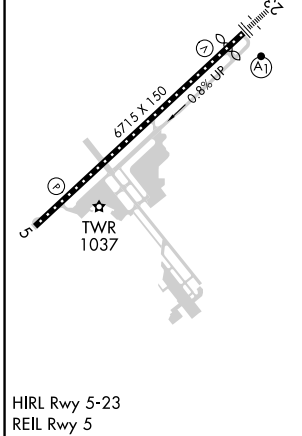
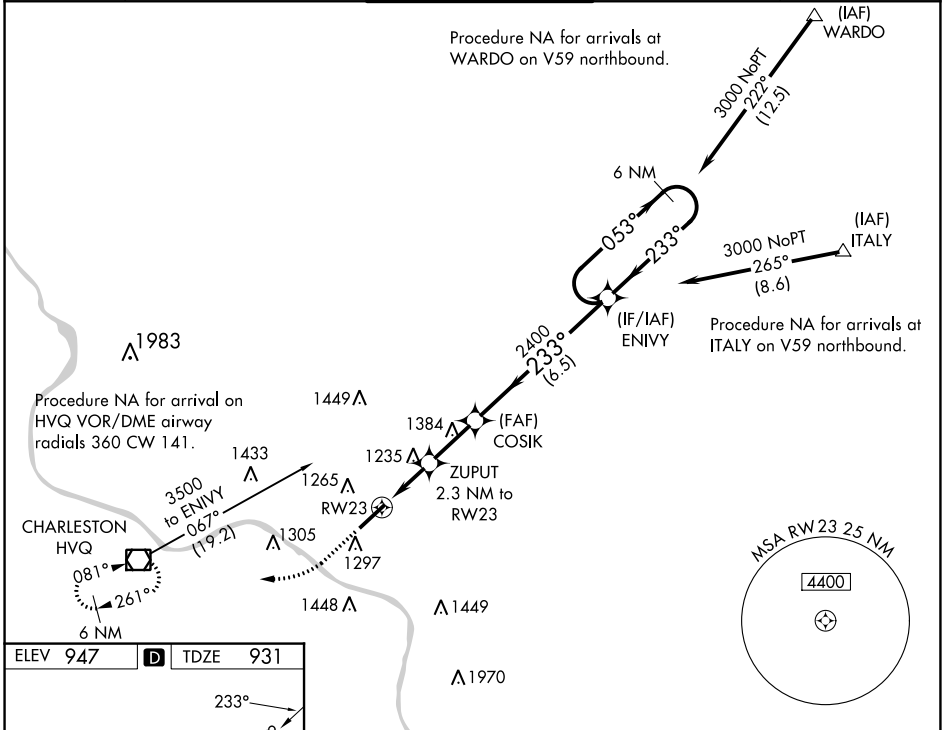
WEST VIRGINIA INTL YEAGER (CRW)

**⚠** For uncompensated Baro-VNAV systems, LNAV/VNAV NA below -15°C (4°F) or above 54°C (130°F). DME/DME RNP-0.3 NA.  
**⚠** For inoperative ALSF, increase LNAV/VNAV all Cats visibility to 2 1/4.  
 \*\*RVR 1800 authorized with use of FD or AP or HUD to DA.



MISSED APPROACH: Climb to 1400 then dimbing right turn to 3000 direct HVQ VOR/DME and hold.

ATIS <b>127.6</b>	CHARLESTON APP CON <b>124.1 269.125</b>	CHARLESTON TOWER <b>125.7 257.8</b>	GND CON <b>121.8 348.6</b>	CLNC DEL <b>118.55</b>
----------------------	--------------------------------------------	----------------------------------------	-------------------------------	---------------------------



CATEGORY	A	B	C	D
LPV DA**		1131/24	200 (200-1/2)	
LNAV/VNAV DA		1601-1 1/8	670 (700-1 1/8)	
LNAV MDA	1500/24	569 (600-1/2)	1500-1 3/8 569 (600-1 3/8)	
<b>C</b> CIRCLING	1600-1	653 (700-1)	1760-2 1/2 813 (900-2 1/2)	1760-2 3/4 813 (900-2 3/4)

NE-4, 08 AUG 2024 to 05 SEP 2024

NE-4, 08 AUG 2024 to 05 SEP 2024