

LOC/DME I-HCV <b>110.3</b> Chan <b>40</b>	APP CRS <b>052°</b>	Rwy Idg <b>6215</b> TDZE <b>947</b> Apt Elev <b>947</b>
---	------------------------	---

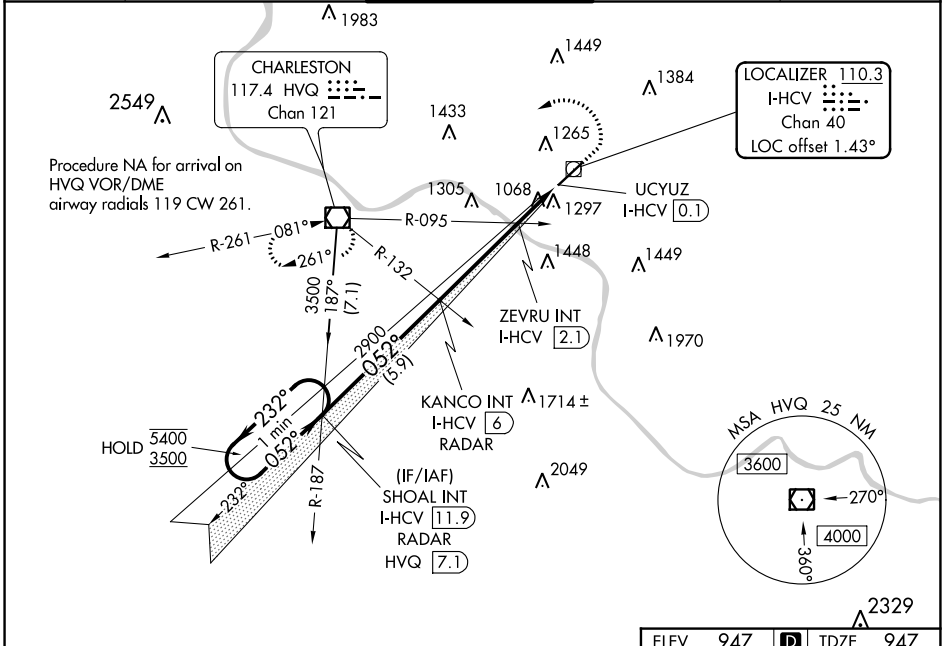
# ILS or LOC RWY 5

WEST VIRGINIA INTL YEAGER (CRW)

**Autopilot coupled approach NA below 1300.**

**MISSED APPROACH:** Climb to 1800 then climbing left turn to 3500 direct HVQ VOR/DME and hold.

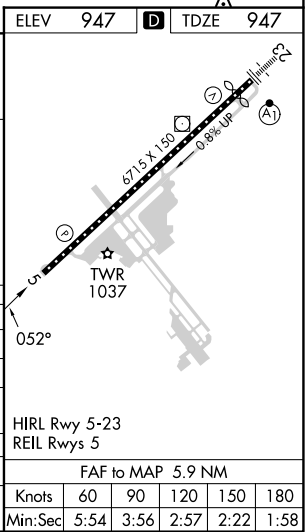
ATIS <b>127.6</b>	CHARLESTON APP CON <b>124.1 269.125</b>	CHARLESTON TOWER <b>125.7 257.8</b>	GND CON <b>121.8 348.6</b>	CLNC DEL <b>118.55</b>
----------------------	--	--	-------------------------------	---------------------------



NE-4, 08 AUG 2024 to 05 SEP 2024

NE-4, 08 AUG 2024 to 05 SEP 2024

One Minute Holding Pattern	SHOAL INT I-HCV <b>11.9</b> RADAR	KANCO INT I-HCV <b>6</b> RADAR	ZEVUR INT I-HCV <b>2.1</b>	I-HCV DME ANTENNA	UCUYUZ I-HCV <b>0.1</b>
5400 ← 232°	3500 → 052°	2900	1640		
GS 3.00° TCH 56					
	5.9 NM	3.9 NM	1 NM	1 NM	0.1
CATEGORY	A	B	C	D	
S-ILS 5	1197/40		250 (300-¾)		
S-LOC 5	1640/55	693 (700-1)	1640-2	693 (700-2)	
<b>C</b> CIRCLING	1640-1	693 (700-1)	1760-2½ 813 (900-2½)	1880-3 933 (1000-3)	
ZEVUR FIX MINIMUMS (DUAL VOR RECEIVERS OR DME REQUIRED)					
S-LOC 5	1320/55		373 (400-1)		
<b>C</b> CIRCLING	1600-1	653 (700-1)	1760-2½ 813 (900-2½)	1880-3 933 (1000-3)	



FAF to MAP 5.9 NM					
Knots	60	90	120	150	180
Min:Sec	5:54	3:56	2:57	2:22	1:58