

WAAS CH 99335 W30A	APP CRS 301°	Rwy Idg 3998 TDZE 2206 Apt Elev 2209
--	------------------------	---

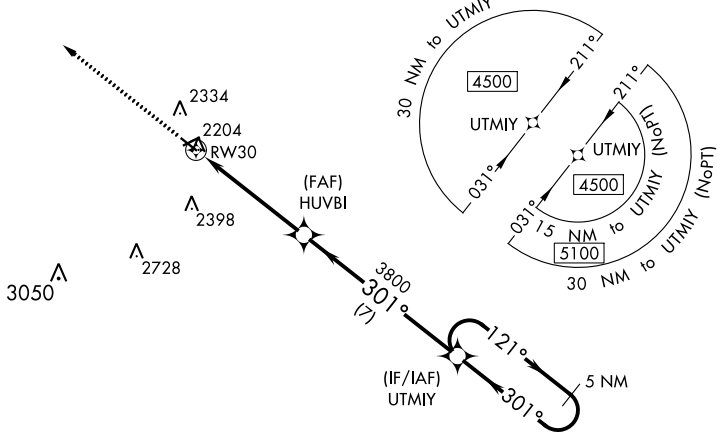
RNAV (GPS) RWY 30

PHILIP (PHP)

▼ DME/DME RNP-0.3 NA. When local altimeter setting not received, use Pierre altimeter setting and increase all DA 204 feet and MDA 220 feet and increase LPV all Cats visibility 1/2 mile, increase LNAV/VNAV all Cats visibility 1 mile, increase LNAV Cat C visibility 1/2 mile, and increase Circling Cat C visibility 3/4 mile. Helicopter visibility reduction below 1 SM NA. Procedure NA at night. For uncompensated Baro-VNAV systems, LNAV/VNAV NA below -14°C (7°F) or above 54°C (130°F). Baro-VNAV NA when using Pierre altimeter setting.

MISSED APPROACH:
Climb to 4500 direct CUSED and hold.

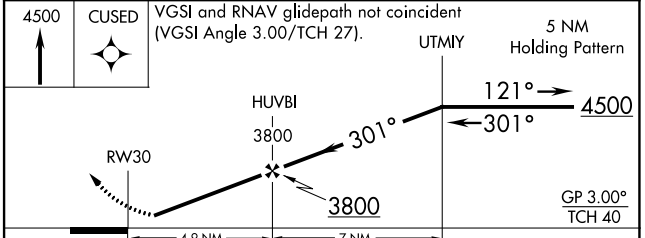
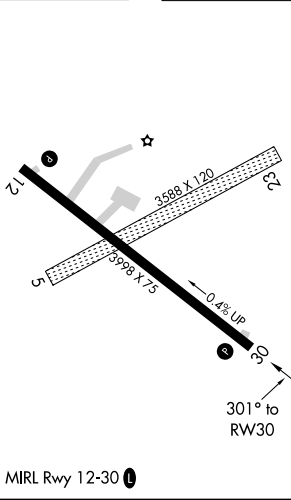
ASOS 118.375	DENVER CENTER 127.95 338.2	UNICOM 122.8 (CTAF) 0
------------------------	--------------------------------------	---------------------------------



NC-1, 31 OCT 2024 to 28 NOV 2024

NC-1, 31 OCT 2024 to 28 NOV 2024

ELEV 2209	TDZE 2206
------------------	------------------



CATEGORY	A	B	C	D
LPV DA	2456-1	250 (300-1)	2456-1 3/8 250 (300-1 3/8)	NA
LNAV/VNAV DA	2794-2		588 (600-2)	NA
LNAV MDA	2620-1	414 (500-1)	2620-1 1/4 414 (500-1 1/4)	NA
C CIRCLING	2720-1 511 (600-1)	2760-1 551 (600-1)	2840-1 3/4 631 (700-1 3/4)	NA