

WAAS CH 78230 W13A	APP CRS 133°	Rwy Idg TDZE Apt Elev	7257 35 36
--	------------------------	-----------------------------	---------------------------------------

RNAV (GPS) Y RWY 13

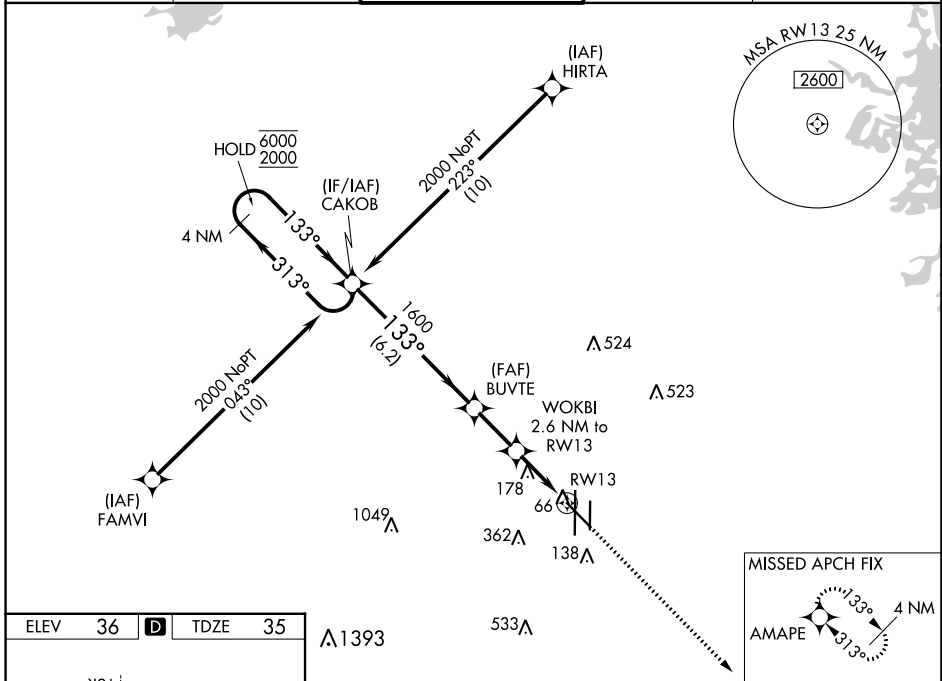
VALLEY INTL (H.R.L.)

RNP APCH - GPS.

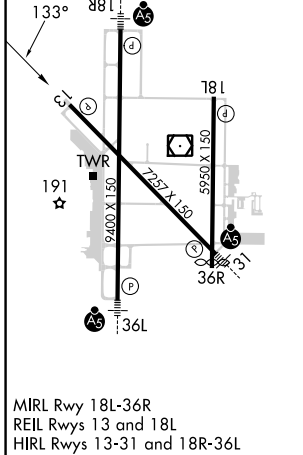
⚠ Baro-VNAV and VDP NA when using Port Isabel altimeter setting. For uncompensated Baro-VNAV systems, LNAV/VNAV NA below -1°C or above 54°C. When local altimeter setting not received, use Port Isabel altimeter setting: increase LPV DA to 327 feet and all visibilities 1/8 SM; increase LNAV/VNAV DA to 327 feet and all visibilities 1/8 SM; increase all MDAs 60 feet and visibility Cats C and D 1/4 SM.

MISSED APPROACH:
Climb to 2000 direct
AMAPE and hold.

ATIS 124.85	VALLEY APP CON 120.7 279.5	HARLINGEN TOWER ★ 119.3 (CTAF) 0 317.6	GND CON 121.7	UNICOM 122.95
-----------------------	--------------------------------------	--	-------------------------	-------------------------



ELEV	36	D	TDZE	35
------	-----------	----------	------	-----------



MIRL Rwy 18L-36R
REIL Rwys 13 and 18L
HIRL Rwys 13-31 and 18R-36L

4 NM Holding Pattern	CAKOB	2000	AMAPE
6000 2000	← 313° 133° →	133°	
GP 3.00° TCH 59	1600	920	1.1 NM to RWY 13
	6.2 NM	2.1 NM	1.5 NM
CATEGORY	A	B	C
LPV DA		285-3/4	250 (300-3/4)
LNAV/VNAV DA		285-3/4	250 (300-3/4)
LNAV MDA	440-1	405 (500-1)	440-1 1/8 405 (500-1 1/8)
C CIRCLING	460-1 424 (500-1)	560-1 524 (600-1)	600-1 1/2 564 (600-1 1/2)
			680-2 644 (700-2)

SC-3, 31 OCT 2024 to 28 NOV 2024

SC-3, 31 OCT 2024 to 28 NOV 2024