

APP CRS	Rwy Idg	<b>7257</b>
<b>133°</b>	TDZE	<b>35</b>
	Apt Elev	<b>36</b>

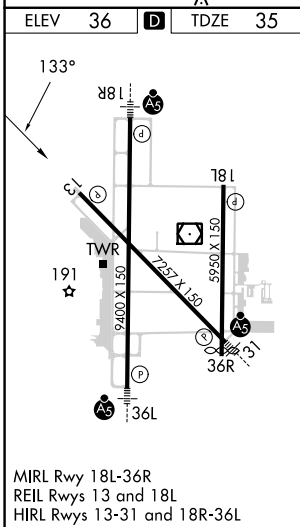
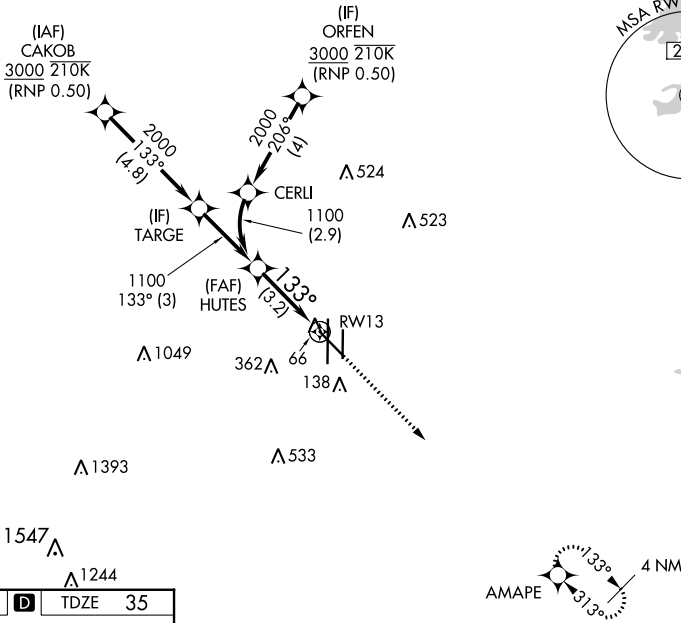
# RNAV (RNP) Z RWY 13

VALLEY INTL (HRL)

RNP AR APCH - GPS.			MISSED APPROACH: Climb to 2000 direct AMAPE and hold.	
⚠ For uncompensated Baro-VNAV systems, procedure NA below -1°C or above 54°C. When local altimeter setting not received, procedure NA.				
ATIS <b>124.85</b>	VALLEY APP CON <b>120.7 279.5</b>	HARLINGEN TOWER ★ <b>119.3 (CTAF) 0 317.6</b>	GND CON <b>121.7</b>	UNICOM <b>122.95</b>

SC-3, 31 OCT 2024 to 28 NOV 2024

SC-3, 31 OCT 2024 to 28 NOV 2024



HUTES 1100 1100 GP 3.00° TCH 59 See planview for multiple IF locations.	2000 ↑ AMAPE ⬠															
RWY 13 3.2 NM																
133°	4 NM															
UNITED STATES MEXICO																
<table border="1" style="width: 100%;"> <thead> <tr> <th>CATEGORY</th> <th>A</th> <th>B</th> <th>C</th> <th>D</th> </tr> </thead> <tbody> <tr> <td>RNP 0.15 DA</td> <td></td> <td>285-¾</td> <td>250 (300-¾)</td> <td></td> </tr> <tr> <td>RNP 0.30 DA</td> <td></td> <td>342-⅞</td> <td>307 (400-⅞)</td> <td></td> </tr> </tbody> </table>	CATEGORY	A	B	C	D	RNP 0.15 DA		285-¾	250 (300-¾)		RNP 0.30 DA		342-⅞	307 (400-⅞)		<h2>AUTHORIZATION REQUIRED</h2>
CATEGORY	A	B	C	D												
RNP 0.15 DA		285-¾	250 (300-¾)													
RNP 0.30 DA		342-⅞	307 (400-⅞)													