

WAAS CH 90430 W18B	APP CRS 178°	Rwy Idg TDZE Apt Elev	5949 34 36
--	------------------------	-----------------------------	---------------------------------------

RNAV (GPS) RWY 18L

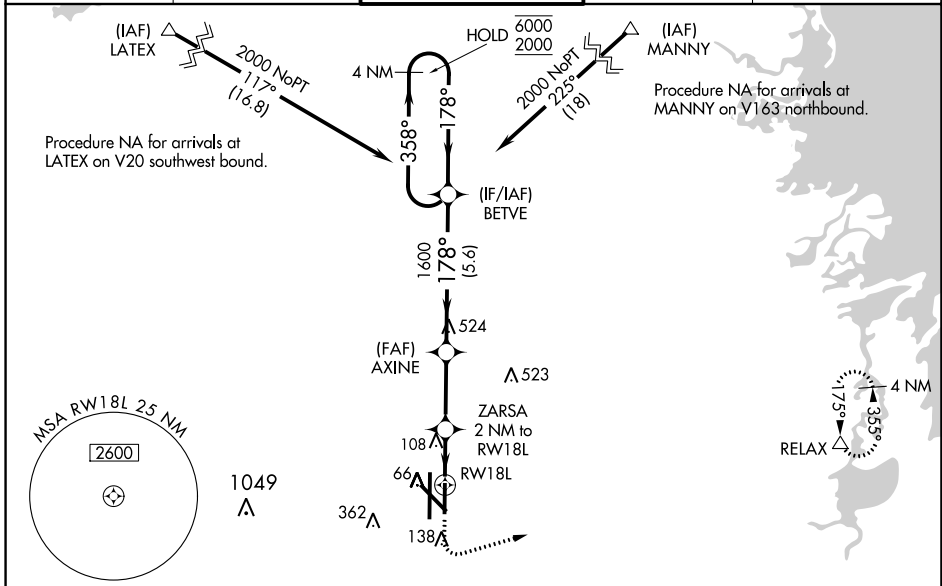
VALLEY INTL (H.R.L.)

RNP APCH - GPS.

⚠ Baro-VNAV and VDP NA when using Port Isabel altimeter setting. For uncompensated Baro-VNAV systems, LNAV/VNAV NA below -1°C or above 54°C. When local altimeter setting not received, use Port Isabel altimeter setting; increase LPV DA to 276 feet; increase LNAV/VNAV DA to 326 feet and all visibilities 1/8 SM; increase all MDAs 60 feet and LNAV visibility Cats C and D 1/8 SM, and Circling visibility Cat C and D 1/4 SM.

MISSED APPROACH:
Climb to 500 then climbing left turn to 2000 direct RELAX and hold.

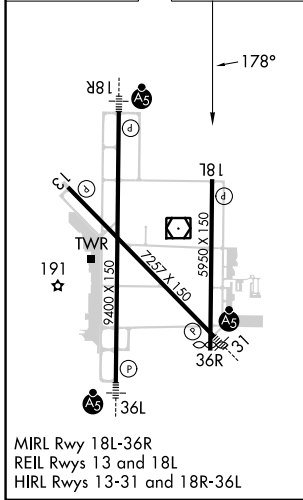
ATIS 124.85	VALLEY APP CON 120.7 279.5	HARLINGEN TOWER ★ 119.3(CTAF) 0 317.6	GND CON 121.7	UNICOM 122.95
-----------------------	--------------------------------------	---	-------------------------	-------------------------



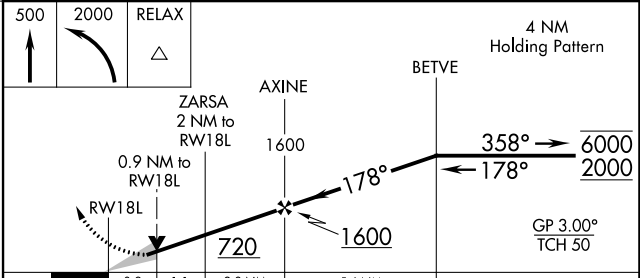
SC-3, 31 OCT 2024 to 28 NOV 2024

SC-3, 31 OCT 2024 to 28 NOV 2024

ELEV 36	D	TDZE 34
---------	----------	---------



MIRL Rwy 18L-36R
REIL Rwy 13 and 18L
HIRL Rwy 13-31 and 18R-36L



CATEGORY	A	B	C	D
LPV DA		234-3/4	200 (200-3/4)	
LNAV/VNAV DA		284-3/4	250 (300-3/4)	
LNAV MDA		360-1	326 (400-1)	
C CIRCLING	460-1 424 (500-1)	560-1 524 (600-1)	600-1 1/2 564 (600-1 1/2)	680-2 644 (700-2)