

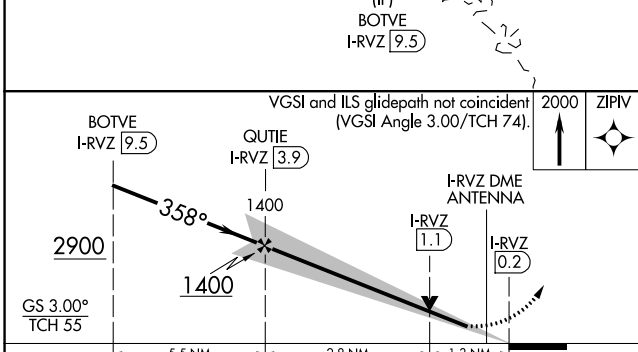
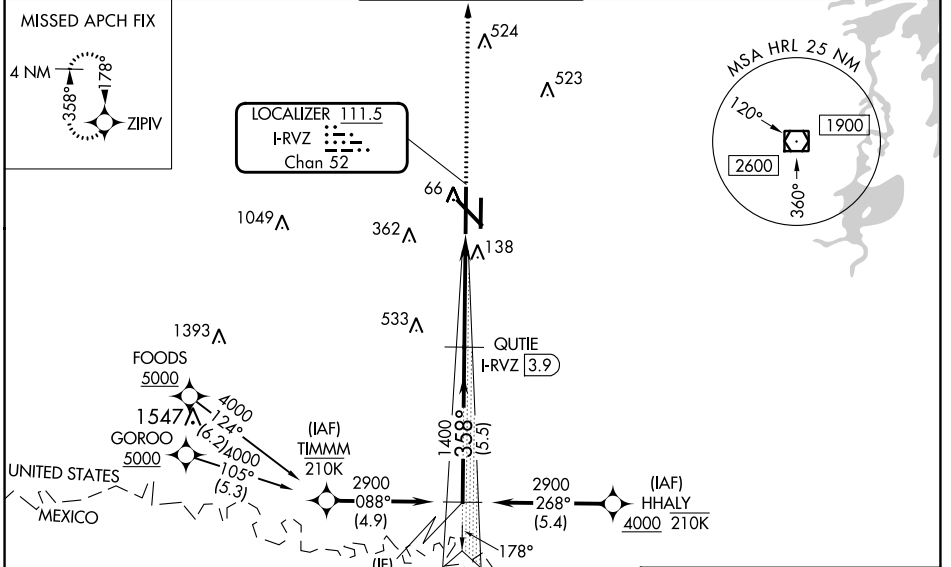
LOC/DME I-RVZ <b>111.5</b> Chan <b>52</b>	APP CRS <b>358°</b>	Rwy Idg TDZE Apt Elev	<b>9400</b> <b>36</b> <b>36</b>
---	------------------------	-----------------------------	---------------------------------------

# ILS or LOC RWY 36L

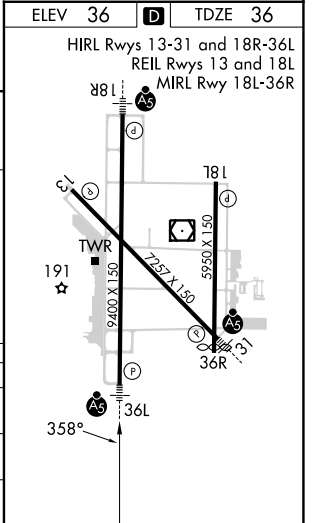
VALLEY INTL (HRL)

RNP APCH - GPS.		MALSR		MISSED APPROACH: Climb to 2000 direct ZIPIV and hold.
DME required.				
▼ VDP NA when using PIL altimeter setting. When local altimeter setting not received, use Port Label altimeter setting and increase S-ILS 36L DA to 278 feet; increase all MDAs 60 feet and S-LOC 36L Cats C and D visibilities to RVR 5500 and Circling visibility Cats C and D ½ SM. For inop ALS, increase S-LOC 36L Cat C/D visibility to 1 ½ SM. ▲ * RVR 1800 authorized with use of FD or AP or HUD to DA (NA when using PIL altimeter setting).				

ATIS <b>124.85</b>	VALLEY APP CON <b>120.7 279.5</b>	HARLINGEN TOWER ★ <b>119.3 (CTAF) 317.6</b>	GND CON <b>121.7</b>	UNICOM <b>122.95</b>
-----------------------	--------------------------------------	--	-------------------------	-------------------------



CATEGORY	A	B	C	D
S-ILS 36L *	236/24 200 (200-½)			
S-LOC 36L	500/24	464 (500-½)	500/50	464 (500-1)
CIRCLING	500-1 464 (500-1)	560-1 524 (600-1)	600-1¾ 564 (600-1¾)	680-2 644 (700-2)



SC-3, 31 OCT 2024 to 28 NOV 2024

SC-3, 31 OCT 2024 to 28 NOV 2024