

LOC/DME I-HRL	APP CRS	Rwy Idg	9400
<b>111.5</b>	<b>178°</b>	TDZE	<b>35</b>
Chan <b>52</b>		Apt Elev	<b>36</b>

# ILS or LOC RWY 18R

VALLEY INTL (H.R.L.)

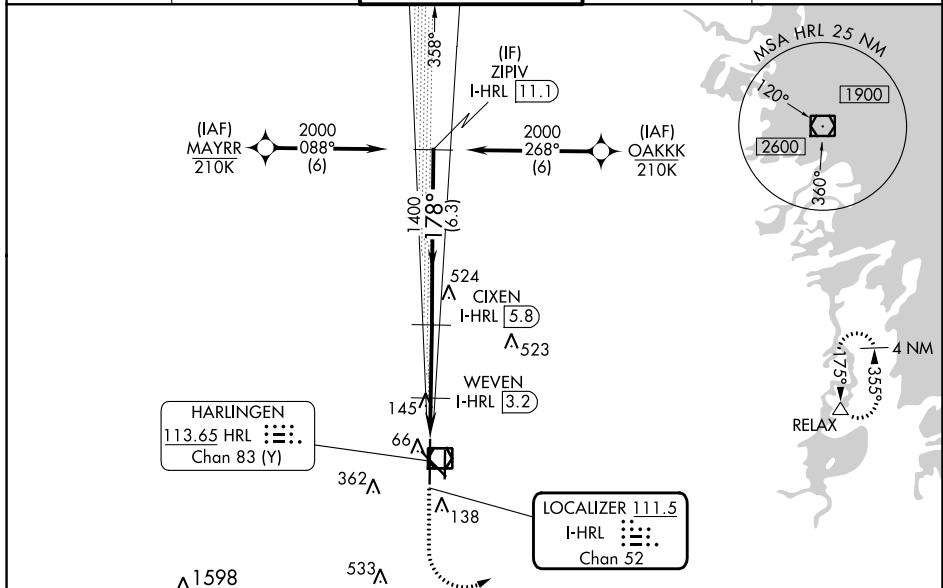
RNP APCH - GPS.

⚠ When local altimeter setting not received, use Port Isabel altimeter setting: increase S-ILS 18R DA to 277 feet; increase all MDAs 60 feet and S-LOC 18R visibility Cat C/D to RVR 4000 and Circling Cat C/D ¼ SM. For inop ALS when using Port Isabel altimeter setting, increase S-LOC 18R visibility Cat C/D to RVR 5500. VDP NA when using Port Isabel altimeter setting.  
 \*RVR 1800 authorized with use of FD or AP or HUD to DA. (NA when using secondary altimeter setting).

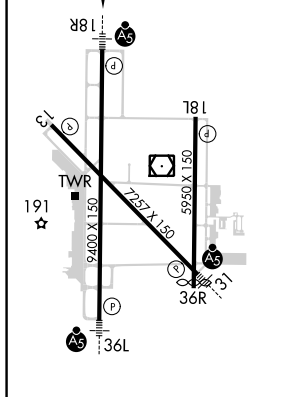


MISSED APPROACH: Climb to 500 then climbing left turn to 2000 direct RELAX and hold.

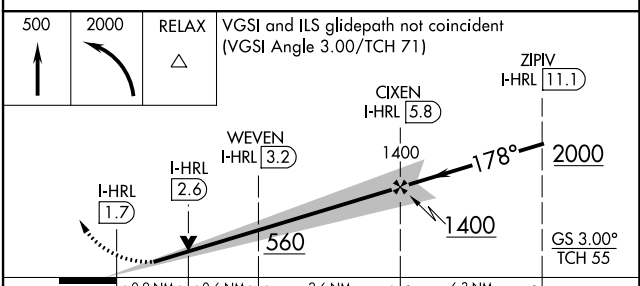
ATIS	VALLEY APP CON	HARLINGEN TOWER ★	GND CON	UNICOM
<b>124.85</b>	<b>120.7 279.5</b>	<b>119.3 (CTAF) 0 317.6</b>	<b>121.7</b>	<b>122.95</b>



ELEV 36	<b>D</b>	TDZE 35
---------	----------	---------



MIRL Rwy 18L-36R  
 REIL Rwys 13 and 18L  
 HIRL Rwys 13-31 and 18R-36L



CATEGORY	A	B	C	D
S-ILS 18R*	235/24 200 (200-½)			
S-LOC 18R	400/24	365 (400-½)	400/35	365 (400-¾)
<b>C</b> CIRCLING	460-1 424 (500-1)	560-1 524 (600-1)	600-1½ 564 (700-1½)	680-2 644 (700-2)

SC-3, 03 OCT 2024 to 31 OCT 2024

SC-3, 03 OCT 2024 to 31 OCT 2024