

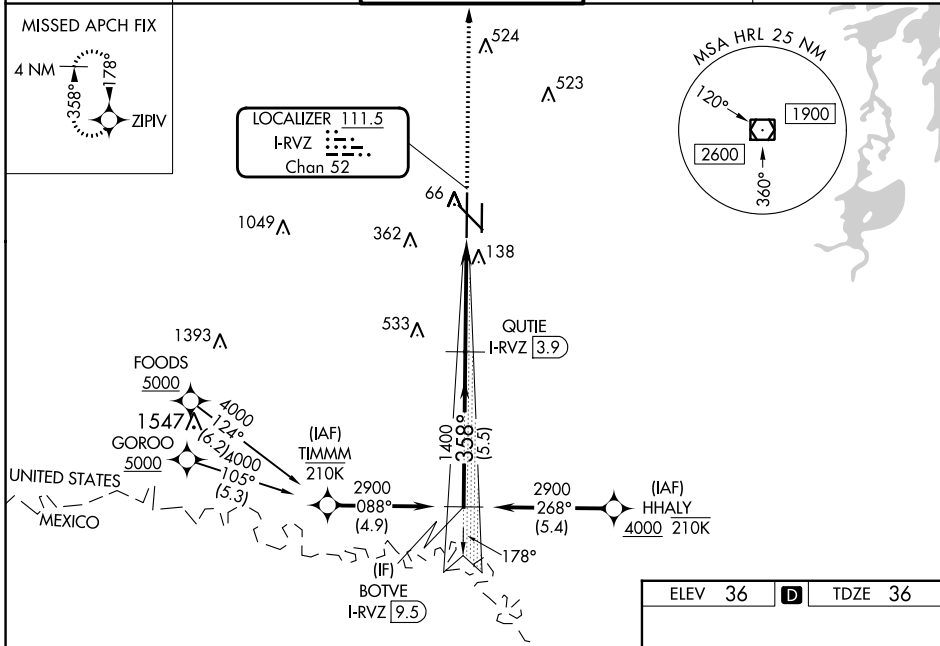
LOC/DME I-RVZ <b>111.5</b> Chan <b>52</b>	APP CRS <b>358°</b>	Rwy Idg <b>9400</b> TDZE <b>36</b> Apt Elev <b>36</b>
---	------------------------	---

# ILS RWY 36L (SA CAT I & II)

VALLEY INTL (HRL)

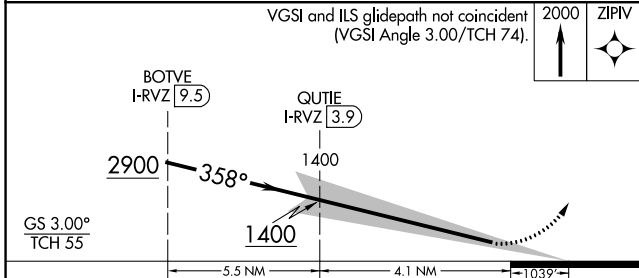
RNP APCH-GPS.	MALSR	MISSED APPROACH: Climb to 2000 direct ZIPIV and hold.
DME required.		
SA CAT I/II: Requires specific OPSPEC, MSPEC, or LOA approval.		

ATIS <b>124.85</b>	VALLEY APP CON <b>120.7 279.5</b>	HARLINGEN TOWER ★ <b>119.3 (CTAF) 317.6</b>	GND CON <b>121.7</b>	UNICOM <b>122.95</b>
-----------------------	--------------------------------------	--	-------------------------	-------------------------

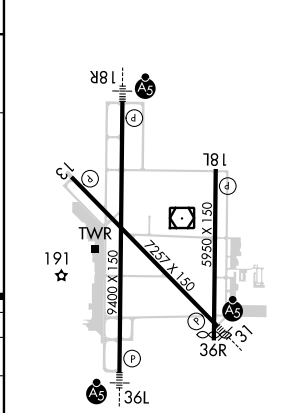


SC-3, 31 OCT 2024 to 28 NOV 2024

SC-3, 31 OCT 2024 to 28 NOV 2024



ELEV 36	<b>D</b>	TDZE 36
---------	----------	---------



CATEGORY	A	B	C	D
S-ILS 36L	SA CAT I RA 150/14 150 DA 186			
S-ILS 36L	SA CAT II RA 100/12 100 DA 136			

**SA CATEGORY I & II ILS - SPECIAL AIRCREW & AIRCRAFT CERTIFICATION REQUIRED**

MIRL Rwy 18L-36R  
REIL Rwy 13 and 18L  
HIRL Rwy 13-31 and 18R-36L