

24249

AIRPORT DIAGRAM

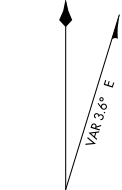
AL-827 (FAA)

VALLEY INTL (H.R.L.)
HARLINGEN, TEXAS

ATIS
124.85
HARLINGEN TOWER ★
119.3 (CTAF) 317.6
GND CON
121.7

FIELD
ELEV
36

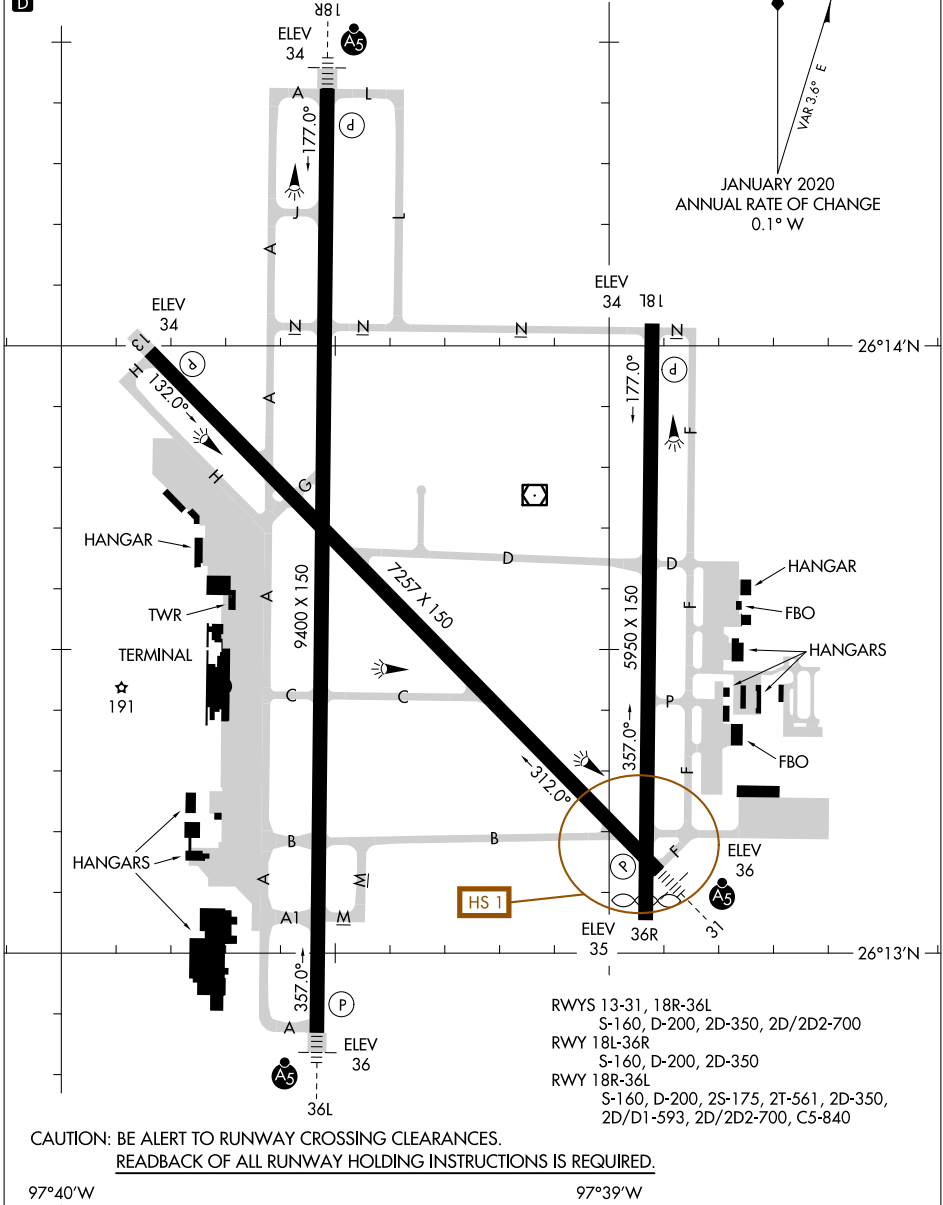
HIRL Rwys 18R-36L and 13-31
MIRL Rwy 18L-36R
REIL Rwys 18L and 13



JANUARY 2020
ANNUAL RATE OF CHANGE
0.1° W

SC-3, 31 OCT 2024 to 28 NOV 2024

SC-3, 31 OCT 2024 to 28 NOV 2024



RWYS 13-31, 18R-36L
S-160, D-200, 2D-350, 2D/2D2-700
RWY 18L-36R
S-160, D-200, 2D-350
RWY 18R-36L
S-160, D-200, 2S-175, 2T-561, 2D-350,
2D/D1-593, 2D/2D2-700, C5-840

CAUTION: BE ALERT TO RUNWAY CROSSING CLEARANCES.
READBACK OF ALL RUNWAY HOLDING INSTRUCTIONS IS REQUIRED.

AIRPORT DIAGRAM

24249

HARLINGEN, TEXAS
VALLEY INTL (H.R.L.)