

VORTAC GGG 112.9 Chan 76	APP CRS 306°	Rwy Idg TDZE Apt Elev	9200 354 366
--	------------------------	-----------------------------	---

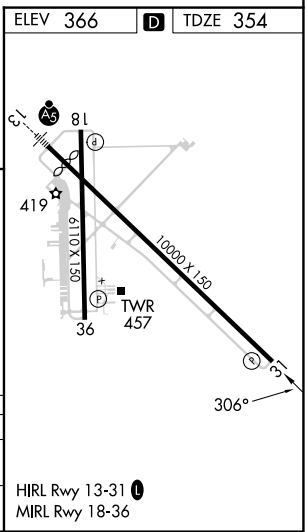
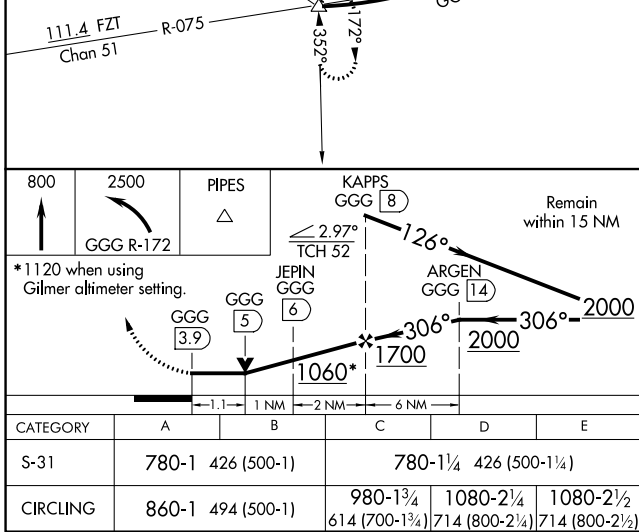
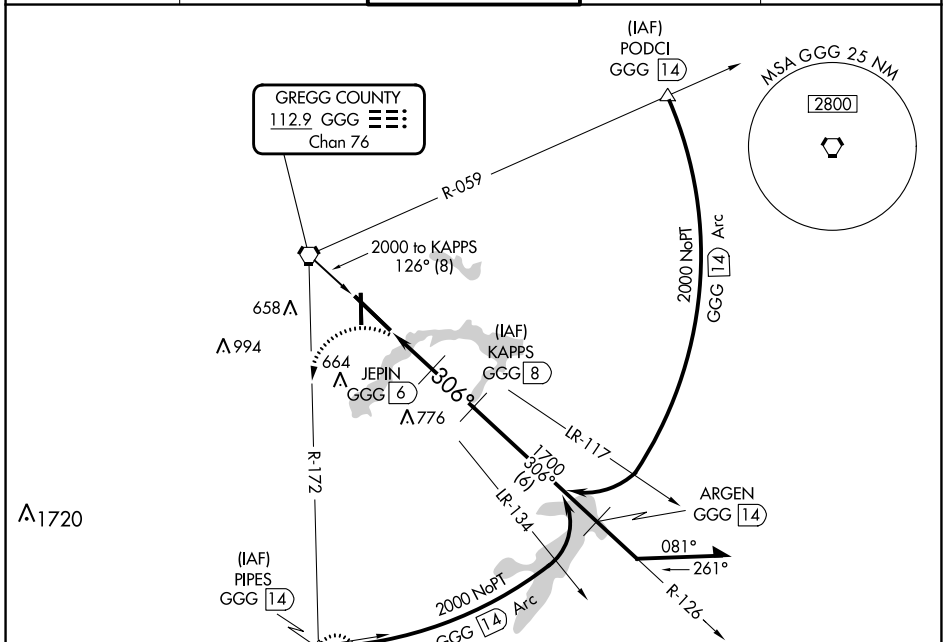
VOR/DME or TACAN RWY 31

EAST TEXAS RGNL (GGG)

⚠ When local altimeter setting not received, use Gilmer altimeter setting and increase all MDA 60 feet and increase S-31 Cats C/D/E and Circling Cats C/D/E visibility ½ SM. VDP NA when using Gilmer altimeter setting.

⚠ MISSED APPROACH: Climb to 800, then climbing left turn to 2500 via GGG R-172 to PIPES INT and hold.

ATIS 119.65	LONGVIEW APP CON* 124.675 257.975	EASTEX TOWER* 119.2 (CTAF) 377.05	GND CON 121.6	UNICOM 122.95
-----------------------	---	---	-------------------------	-------------------------



SC-2, 03 OCT 2024 to 31 OCT 2024

SC-2, 03 OCT 2024 to 31 OCT 2024